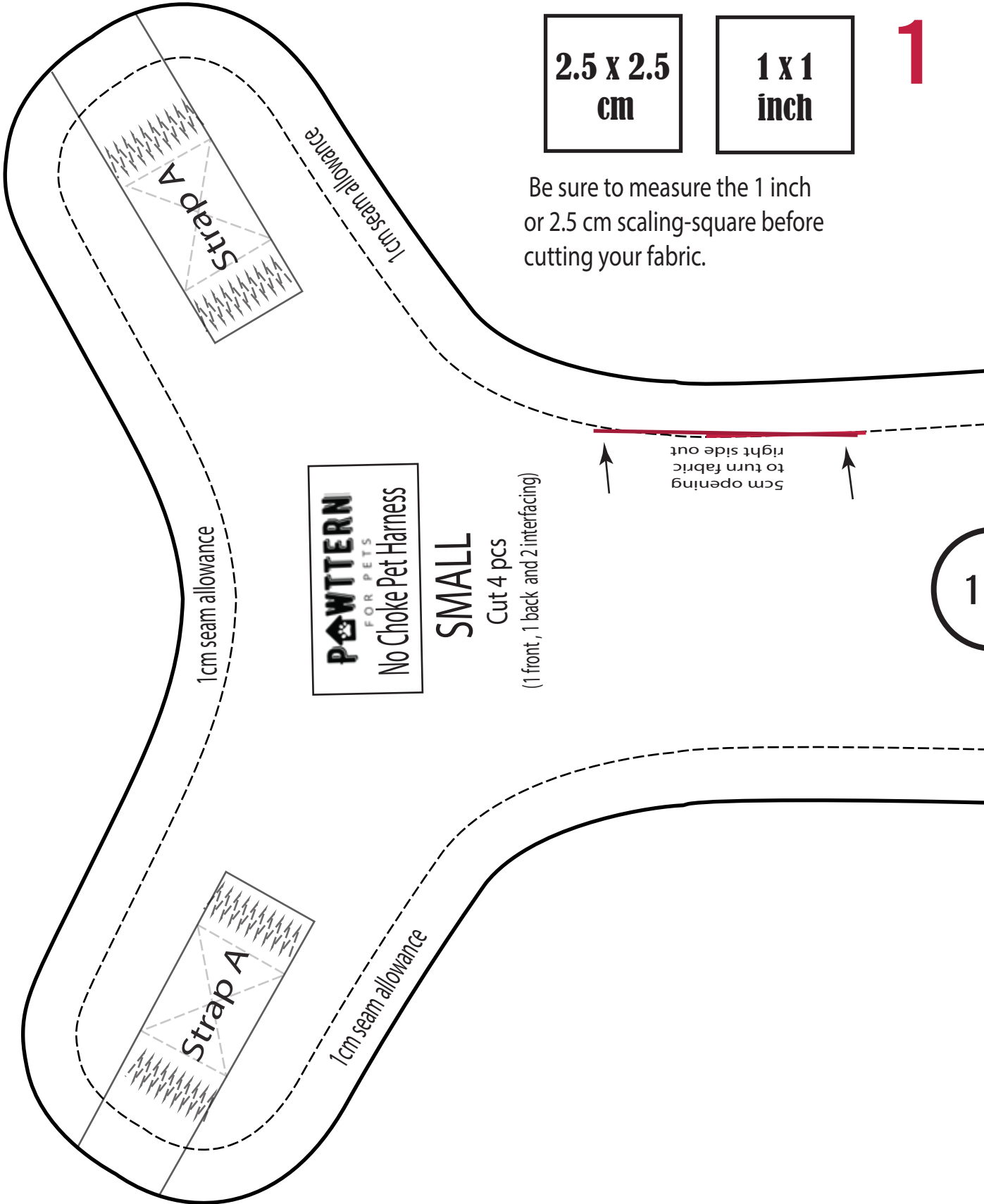


1

2.5 x 2.5
cm

1 x 1
inch

Be sure to measure the 1 inch
or 2.5 cm scaling-square before
cutting your fabric.



1cm seam allowance

PAWTERN
FOR PETS
No Choke Pet Harness

SMALL
Cut 4 pcs

(1 front, 1 back and 2 interfacing)

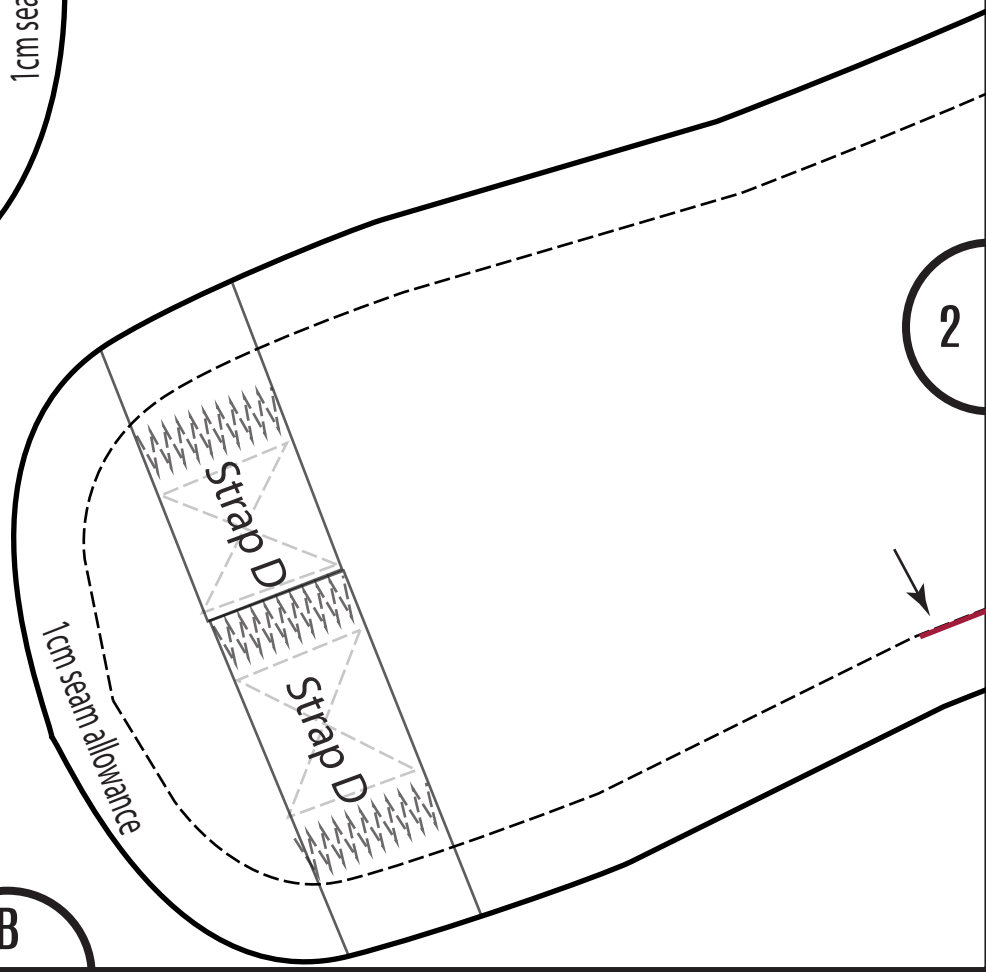
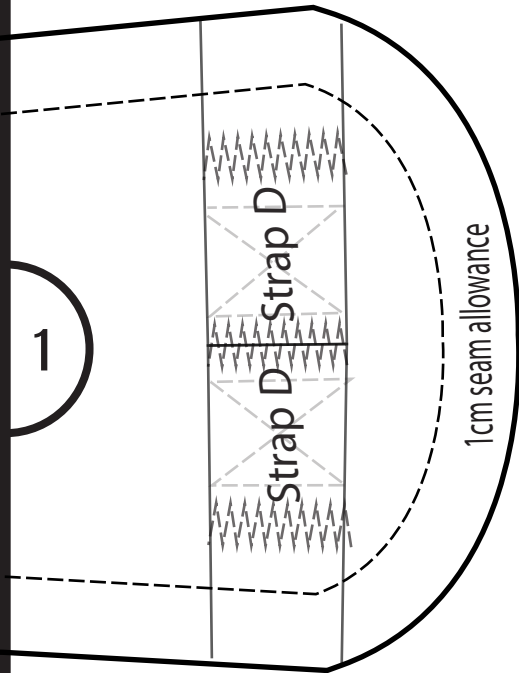
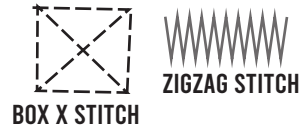
5cm opening
to turn fabric
right side out

1

A

2

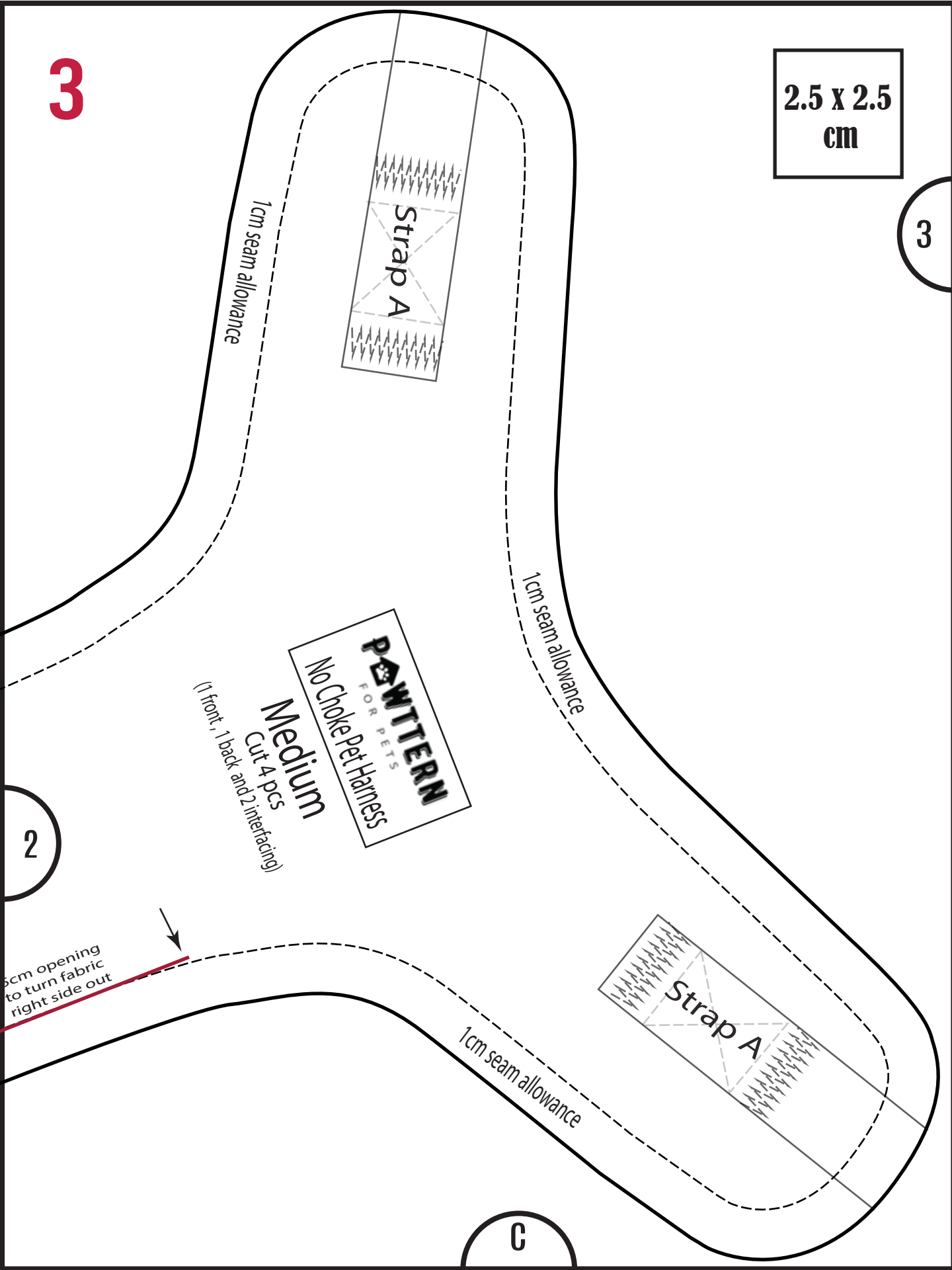
SIZES	NECK GIRTH (min. - max)	CHEST GIRTH (min. - max)
Small	27cm - 33cm	39cm - 48cm
Medium	34cm - 38cm	50cm - 64cm
Large	39cm - 52cm	62cm 78cm
XLarge	53cm - 72cm	74cm 94cm



3

2.5 x 2.5
cm

3



1cm seam allowance

1cm seam allowance

1cm seam allowance

PAWTERN
FOR PETS
No Choke Pet Harness
Medium
Cut 4 pcs
(1 front, 1 back and 2 interfacing)

Strap A

Strap A

5cm opening
to turn fabric
right side out

2

C

2.5 x 2.5
cm

HOW TO CONSTRUCT THE BACK STRAPS?
PLEASE REFER TO PAGE # 5-8 IN THE
TUTORIAL FILE

STRAP LENGTH SIZE	S	M	L	XL
Strap A (2 pieces)	27cm	29cm	33cm	46cm
Strap B (1 piece)	24cm	28cm	32cm	34cm
Strap C (1 piece)	15cm	20cm	22cm	22cm
Strap D (2 pieces)	29cm	33cm	38cm	48cm

STRAP A
3/4 INCH WIDTH
CUT 2 PIECES

STRAP B
3/4 INCH WIDTH
CUT 1 PIECE

STRAP C
3/4 INCH WIDTH
CUT 1 PIECE

STRAP D
3/4 INCH WIDTH
CUT 2 PIECES

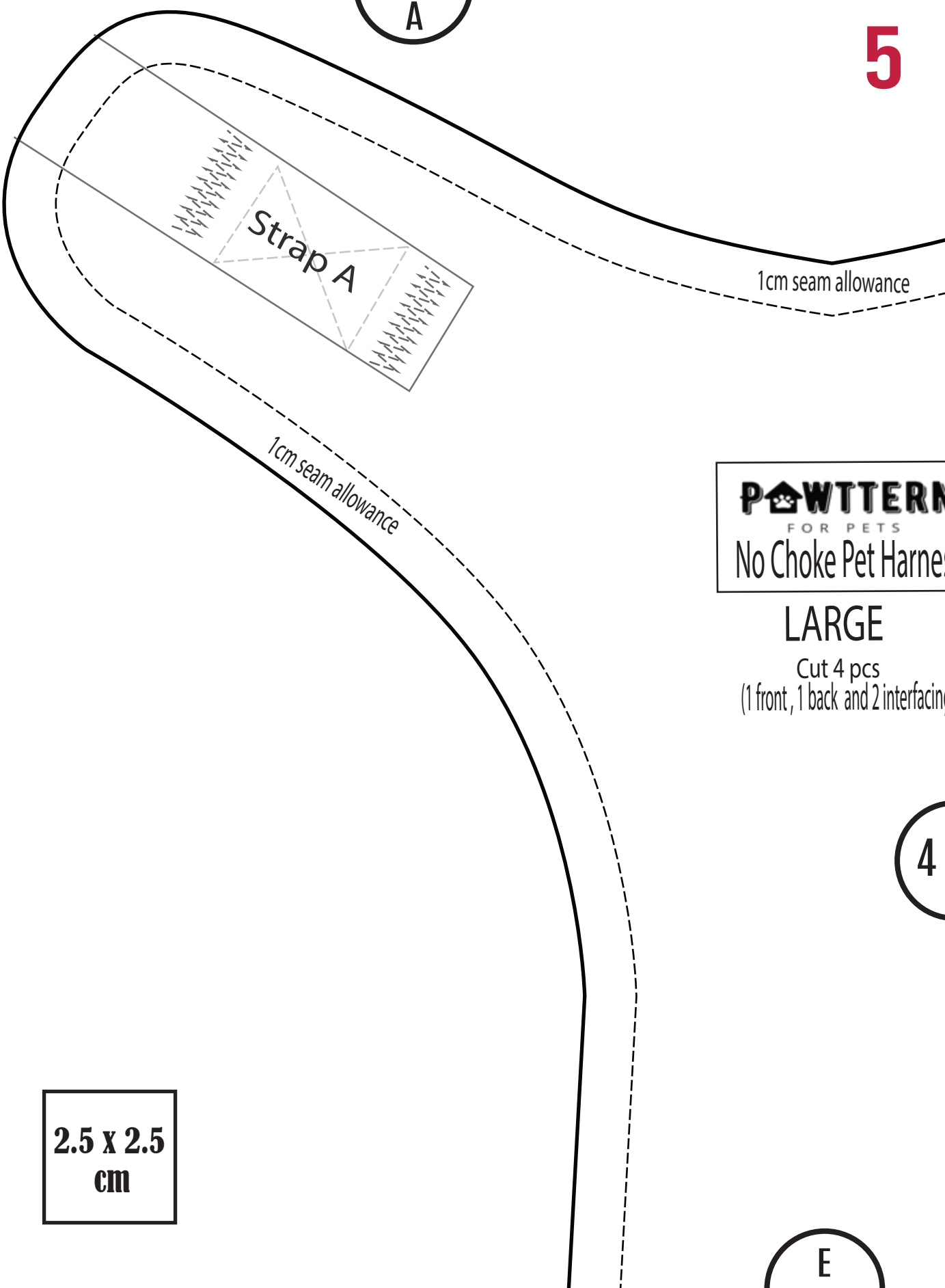
M

S

S

D

5



A

1cm seam allowance

1cm seam allowance

PAWTTERN
FOR PETS
No Choke Pet Harness

LARGE

Cut 4 pcs
(1 front, 1 back and 2 interfacing)

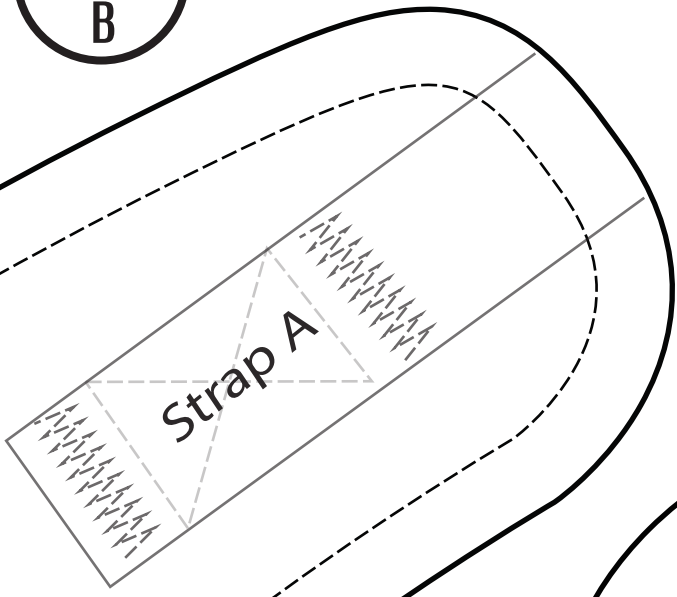
4

E

2.5 x 2.5
cm

6

B



ANCE



4

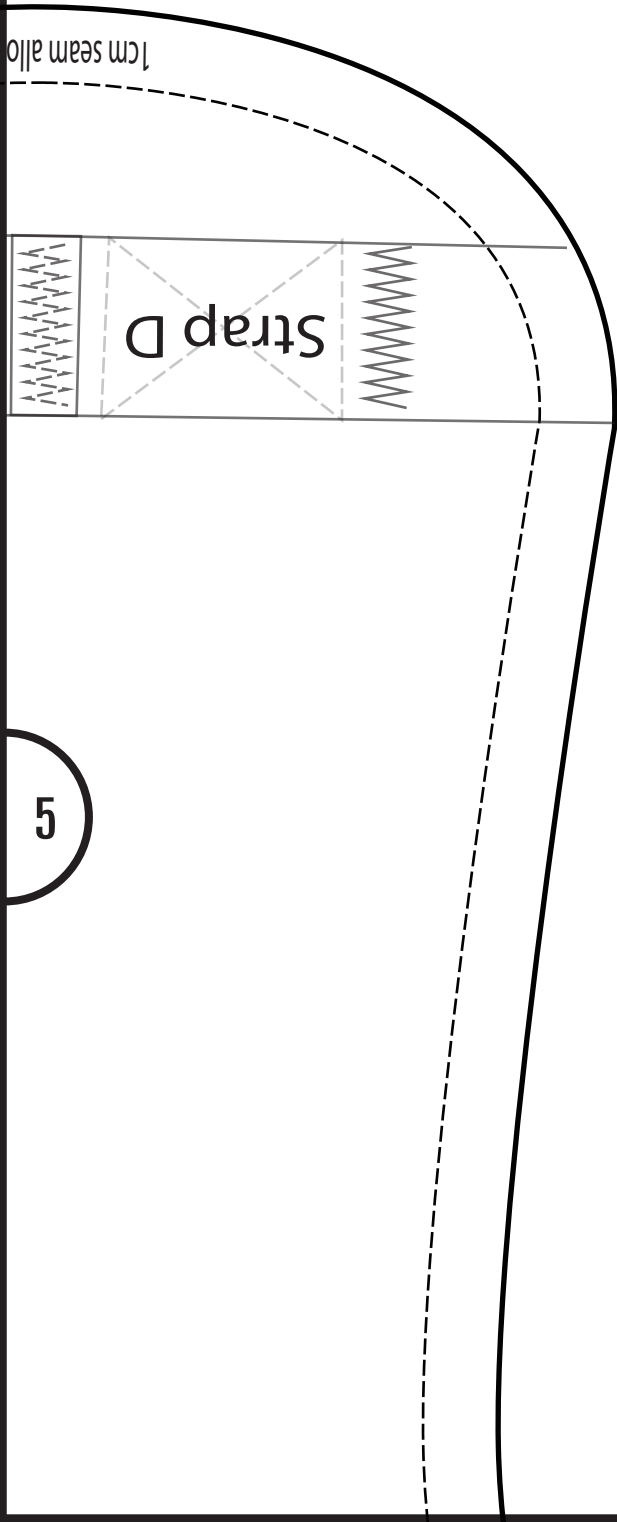
6cm opening
to turn fabric
right side out

5

6cm opening
to turn fabric
right side out

F

C



6

G

2.5 x 2.5
cm

STRAP A
1 INCH WIDTH
CUT 2 PIECES

STRAP B
1 INCH WIDTH
CUT 1 PIECE

STRAP C
1 INCH WIDTH
CUT 1 PIECE

STRAP D
1 INCH WIDTH
CUT 2 PIECES

D

S

M

M

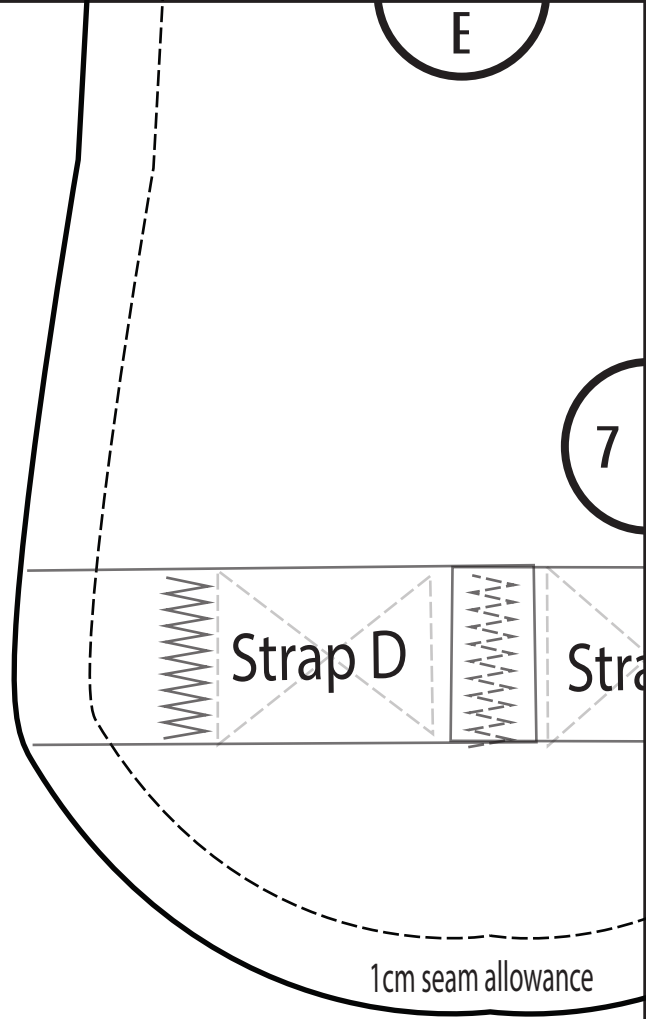
S

M

H



9

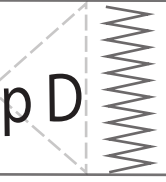


2.5 x 2.5
cm

10

F

7



1cm seam allowance

Strap A

8

PCS and 2 interfacing)

RGE

Pet Harness

PETS

TERN

OWANCE

9

G

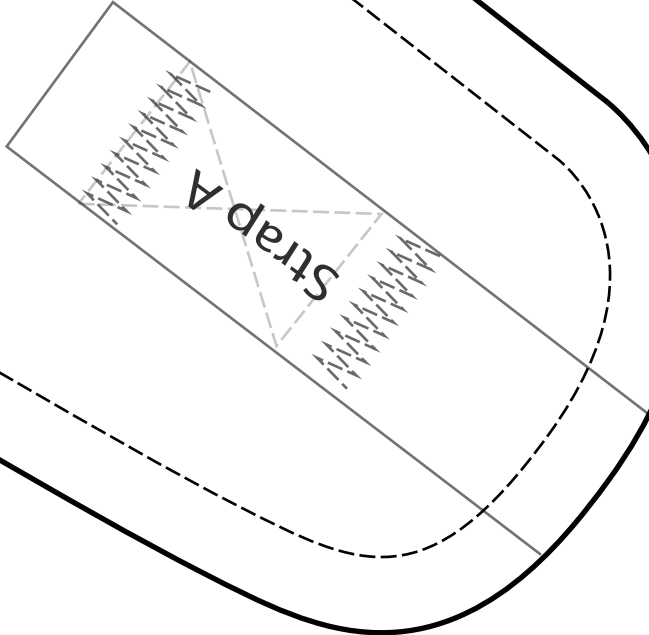
8

XLA
Cut 4
(1 front, 1 back &

No Choke
FOR
PW

1 cm seam al

1 cm seam allowance



2.5 x 2.5
cm

12

9

H

XL

L

L

XL

L

XL

2.5 x 2.5
cm

XL