

Isabella Dress



Small
Medium

Dress A



Dress B



Gorgeous Ruffles in puffy tiers are the focal point on this amazing dress for your little princess!!!

This dress can be made with 2 or 3 ruffles tiers. Dress A, features a sash & a flower in the waist. Dress B, features a bow in the bodice.

Bodice is complete lined and can be made with or without D-ring.

Thank you for purchasing this pattern from Four Seasons Pattern. I hope you have a great sewing experience making an item from my pattern. ENJOY!

All designs and images are copyrighted, all rights reserved. No selling or sharing of the actual pattern/tutorial is permitted. Feel free to sell the items created with this pattern. No mass production.

If you have any question, please contact me at fourseasonspattern@yahoo.com

Copyright © Four Seasons Pattern, 2017

IMPORTANT: I recommend reading through the complete directions before beginning your project.

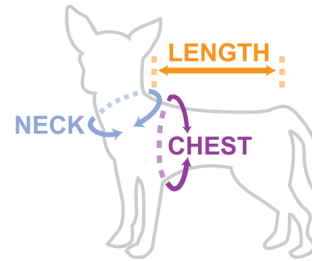
Materials needed:

Fabric, thread, Fabric Pen, Scissors, Measuring Tape or ruler, Straight Pins, Iron, Ironing Board, Sewing Machine.

Suggested Fabrics:

Cotton and Cotton Blends, Calico, Taffeta.

How to measure your dog:



Body Measurements

Size	XX-Small	X-Small	Small	Medium	Large	X-Large	XX-Large
Neck	5.75 - 7.25"	6.75 - 8.25"	7.50 - 9"	8 - 9.75"	9.25 - 11"	10.25 - 12"	12.25 - 14"
Girth	9.5 - 11"	10.75 - 12.50"	12.25 - 14"	13.50 - 15.25	15.25 - 17.25"	16.75 - 19"	19.25 - 21.50"
Length	7.50 - 9"	8.25 - 11"	9 - 11.50"	10.25 - 12"	11 - 13"	12.25 - 14"	14 - 16"

Fabric Yardage & Notions Requirements:

Based on a 44" Bolt

Size	XX-Small	X-Small	Small	Medium	Large	X-Large	XX-Large
Interfacing (Dress A & B)	1/4 Yard	1/4 Yard	1/4 Yard	3/8 Yard	5/8 Yard	3/4 Yard	3/4 Yard

Dress A

Fabric 1	3/8 Yard	3/8 Yard	3/8 Yard	1/2 Yard	1/2 Yard	3/4 Yard	3/4 Yard
Fabric 2	3/8 Yard	3/8 Yard	1/2 Yard	1/2 Yard	1/2 Yard	3/4 Yard	7/8 Yard
Fabric 3	1/4 Yard	1/4 Yard	1/4 Yard	3/8 Yard	1/4 Yard	3/8 Yard	5/8 Yard

Dress B

Fabric 1	1/4 Yard	1/4 Yard	1/4 Yard	3/8 Yard	3/4 Yard	3/4 Yard	7/8 Yard
Fabric 2	1/4 Yard	1/4 Yard	1/4 Yard	1/4 Yard	1/4 Yard	1/2 Yard	1/2 Yard
Fabric 3	1/4 Yard	1/4 Yard	1/4 Yard	3/8 Yard	1/4 Yard	3/8 Yard	5/8 Yard
Tulle	3/8 Yard	3/4 Yard	7/8 Yard	7/8 Yard	1 Yard	1 1/8 Yard	1 1/4 Yard

Notions:

DRESS A

Pre-made flower (optional)

D-Ring (optional):

XXS - XS	1/2"
S - L	3/4"
XL - XXL	1"

DRESS B

Ribbon of your choice for the bow (optional)

VELCRO for Dress A & B

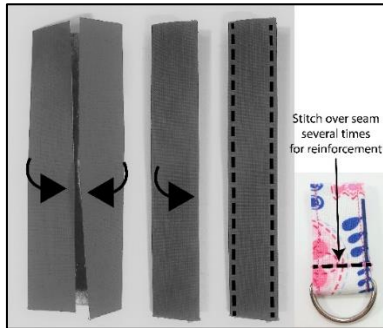
(2 hook & 2 loop strips of Velcro are needed for each dress)

Size	Wide x Length
XXS, XS	3/4" x 1 1/2"
S, M	1" x 2"
L, XL	1 1/2" x 2"
XXL	2" x 2 1/4"

Sewing Instructions

DRESS A

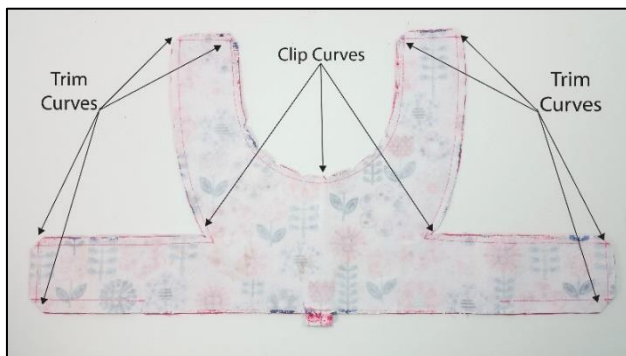
1. Following manufacturer's instructions, fuse interfacing to Bodice & D-ring Tab.



2. Fold long edges to the center; press.
3. Fold again to fold it in half; press.
4. STAYSTITCH long edges.
5. Slide the tab through D-ring.
6. Fold tab in half & stitch across close to D-ring & do a reverse stitch all the way back for reinforcement.
7. Place the D-ring Tab on the center of Bodice at waist.
8. The top edge of the Tab should be at 1" from waistline.
9. Sew in place as pictured.
NOTE: Be sure to keeping lining of bodice free.

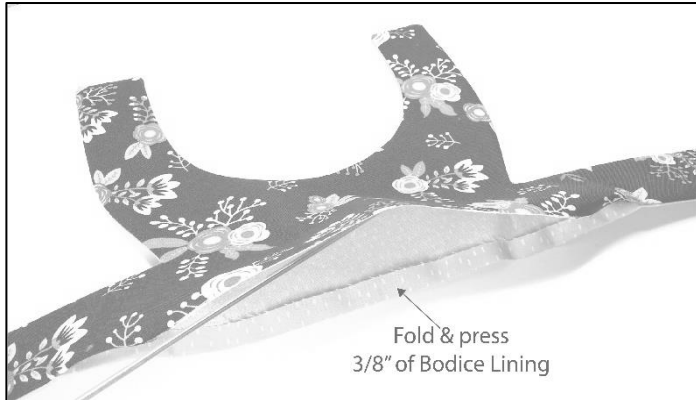


10. With right-sides together, keeping raw edges even, pin in place Bodice and Lining.
11. Sew Bodice and Lining together around outside edges. Leave an opening between squares.



12. Cut corners; clip curves.

13. Turn Bodice right-side out; Press.

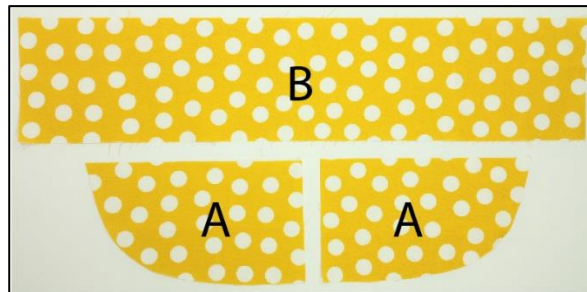


14. Fold to inside & press 3/8" hem of Bodice Lining only.

15. Size XLarge & XXLarge will require to cut the ruffles in three parts in order to get the length needed. So, before start working in the ruffles follow the instructions below to joint the pieces of the ruffles:

If you are not making any of those two sizes then jump to Step 17.

- a. With right-side together pin and sew Ruffle piece A to piece B as marked on pattern.
- b. Finish edge with zigzag



- c. Press seam to side.



- d. Do the same in the other side of the Ruffle.
- e. Repeat Steps a-c for each Ruffle that require joint pieces.
- f. Continue to Step 17.





16. To prepare the Ruffle for hemming, finish bottom edge of Skirt with a tiny zig-zag stitches.



17. Do the same with the other Skirts.



18. Fold $\frac{1}{4}$ " up & press bottom edge & sew in place



19. Do the same with the other Skirts.



20. Gather the top edge of each Skirts and gently pull fabric evenly until its length fit between dots on Bodice.



21. Keeping gather edges even and right-sides up pin together all Ruffles and BASTE.



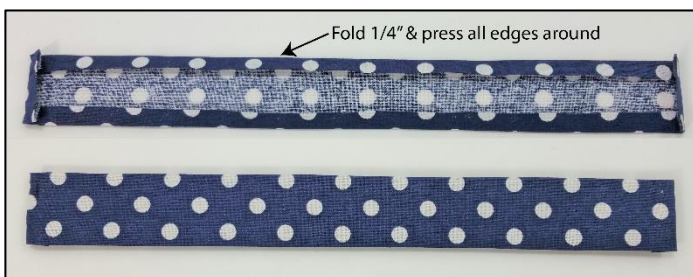
22. Right-sides together, pin & sew Skirt to Bodice between dots marked at waistline, being careful to keep Bodice Lining out of seam.



23. Pin Bodice Lining hem over waist seam and hand sew to cover seam.



24. Topstitch around Bodice edges.



25. Fold 1/4" to back & press all edges of the Belt.



26. Pin Belt to Bodice aligning with the waistline & Skirt.

27. Sewing around edge apply Velcro to Chest.
 NOTE: The Hook (rough) side of the Velcro goes on the outer side of the dress.
 The Loop (soft) side of the Velcro goes on the underside of the opposite side of the top.



28. Purchase a premade flower or make a bow and hand sew on the dress.
 NOTE: Stitch on the back a Pin Bar or a Sew-on Snap for detachable bow/flower



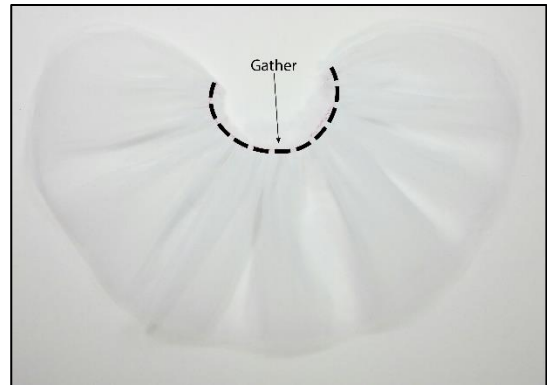
Congratulations,
 You are DONE!!!



DRESS B

29. Following manufacturer's instructions, fuse interfacing to Bodice & D-ring Loop.
 30. Follow instructions for Dress A: Steps 2 to 14.
 31. Follow instructions for Dress A: Step 15, only if you are making Dress in size XLarge or XXLarge.

32. Keeping edges even pin together all layers of Tulle.
 33. Gather the top edge of Skirt and gently pull fabric evenly until its length fit between dots on Bodice.



34. Follow instructions for Dress A: Steps 16 to 20 for hemming & gathering the Ruffles 1 & 2.
 NOTE: Do not hem/zigzag the Tulle Skirt.

This dress does not use the Top Skirt as Dress A.



35. Keeping gathered edges even and right-sides up pin together all Ruffles and BASTE.

36. Follow instructions for Dress A: Steps 22 to 24 for attaching Skirt to Bodice.

37. Follow instructions for Dress A: Steps 27 for sewing on the Velcro closures.

38. Purchase a premade bow or make a bow following the instructions below:



- a. To make the bow cross the ribbon as pictured, and run a basting stitch in the center.
- b. Gather the ribbon forming the bow.
- c. Sew on a button in the center of the flower.

TIP: Stitch on the back a Pin Back Bar or a Sew-on Snap for a removable flower bow (optional)



39. Puff the Tulle Skirt and Ruffles.



**Congratulations,
You are DONE!!!**

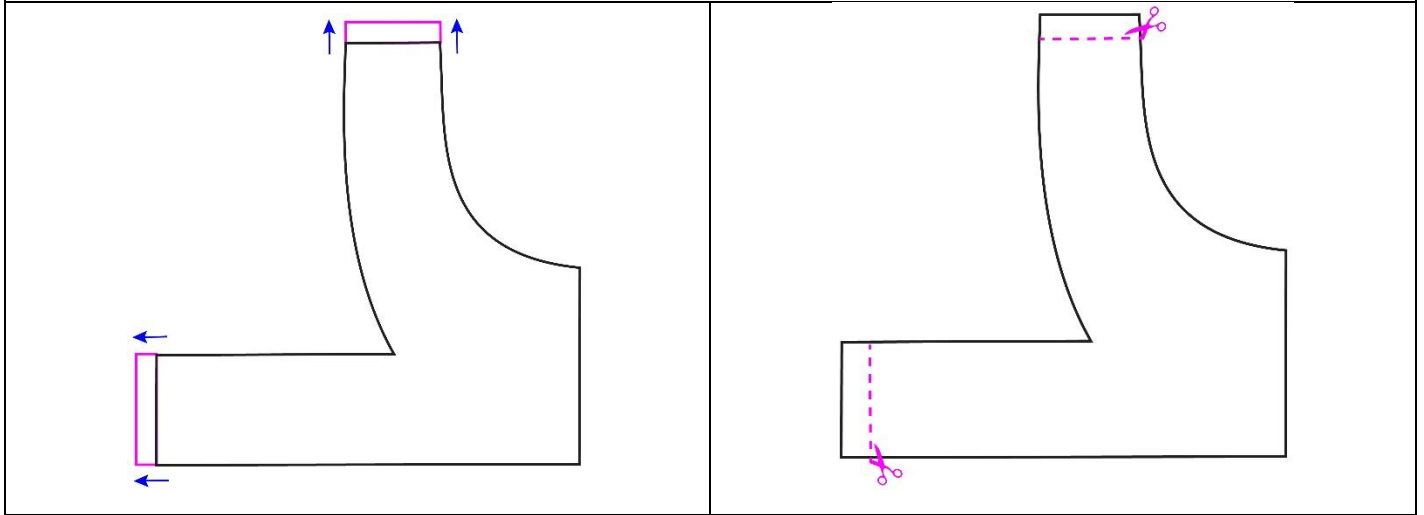
★**★**★**★**★**★**★**★**★**★**★**★**★**★**★**★**★**★

Adjusting The Pattern

TO INCREASE LENGTHEN: Add to the pattern the amount needed as shown by the pink lines in this diagram:

TO DECREASE LENGTHEN: Cut the pattern the amount needed as shown by the pink lines in this diagram:

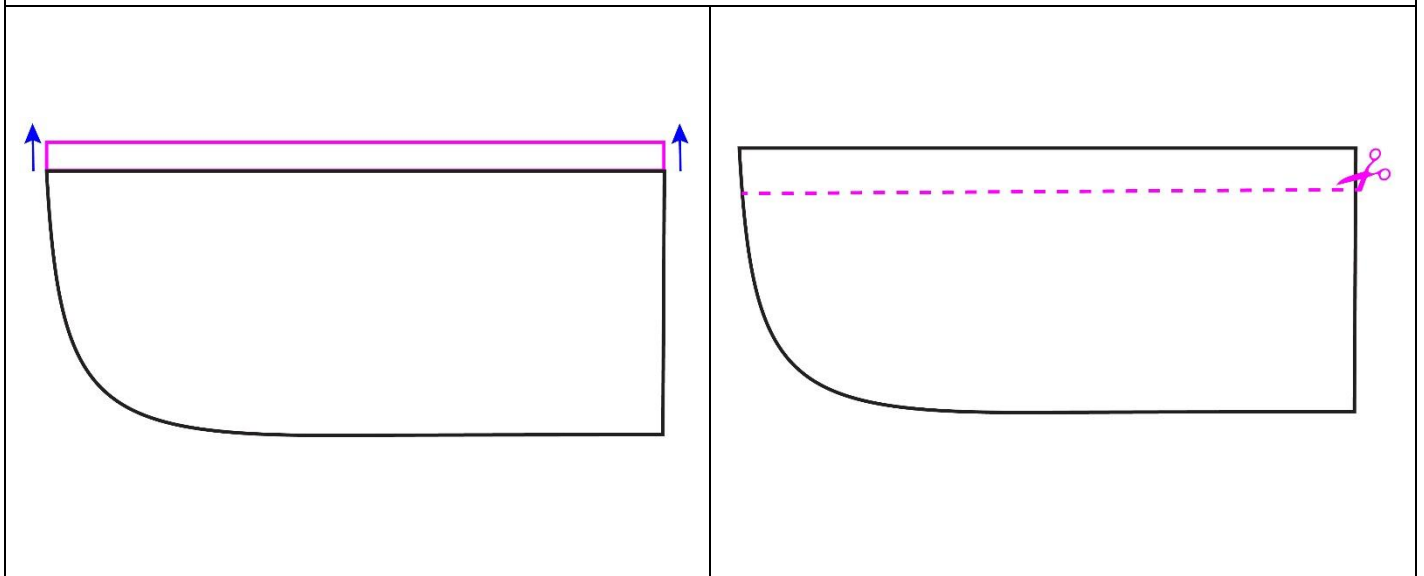
Bodice



TO LENGTHEN: Add to the pattern the amount needed as shown by the pink lines in this diagram:

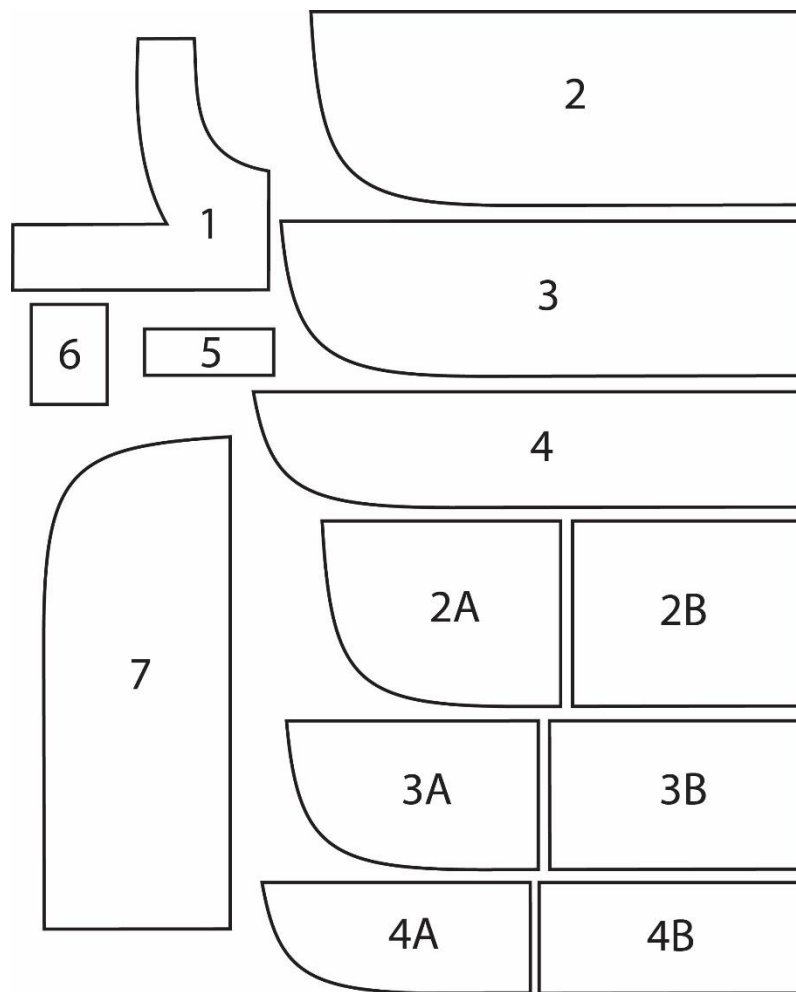
TO SHORTEN: Cut the pattern the amount needed as shown by the pink lines in this diagram:

Ruffles

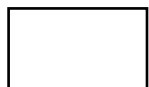


Pattern Pieces

- 1- Bodice/Lining (A, B)
- 2- Ruffle 1 (A, B)
- 3- Ruffle 2 (A, B)
- 4- Ruffle 3 (A)
- 5- Belt (A)
- 6- D-ring Tab (A & B)
- 7- Tulle Skirt (B) for size XXLarge only.
- 2A & 2B- Ruffle 1 (A, B) for size XXLarge only.
- 3A & 3B- Ruffle 2 (A, B) for sizes XLarge & XXLarge only.
- 4A & 4B- Ruffle 3 (A) for sizes XLarge & XXLarge only
- 7- Tulle Skirt (B) for size XXLarge only.



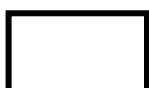
Cutting Layouts



RIGHT side of fabric



WRONG side of fabric



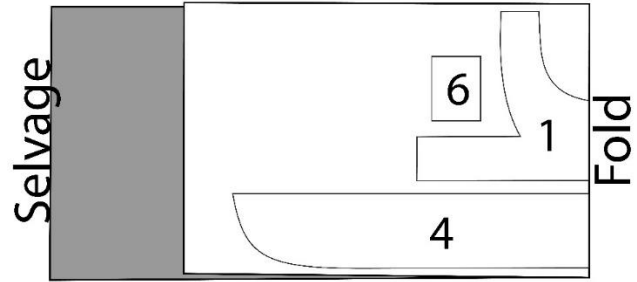
RIGHT side of Pattern



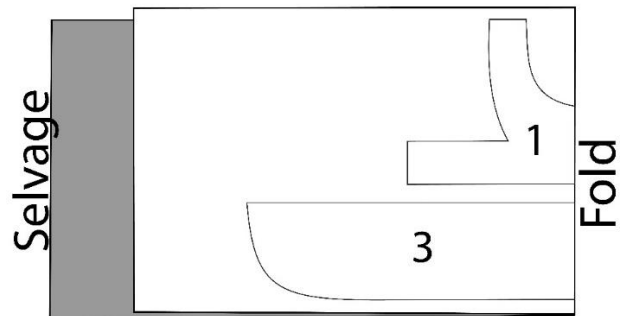
WRONG side of Pattern

Dress A ** Small & Medium

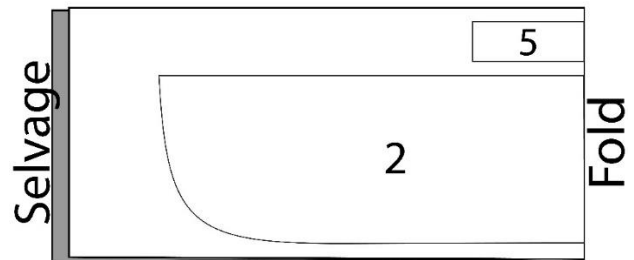
Fabric 1
 44" Bolt
 Use pieces 1, 4, 6



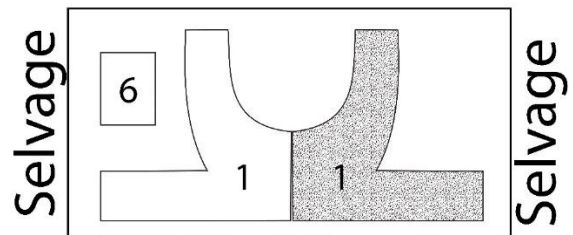
Fabric 2
 44" Bolt
 Use pieces 1, 3



Fabric 3
 44" Bolt
 Use piece 2, 5



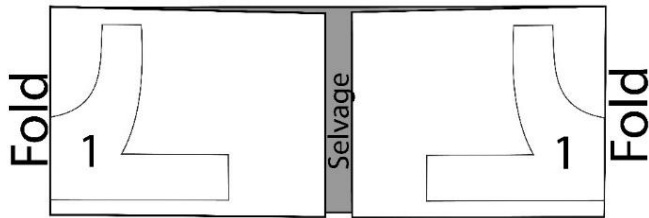
Interfacing
 20" Bolt
 Use pieces 1, 6



Dress B ** Small & Medium

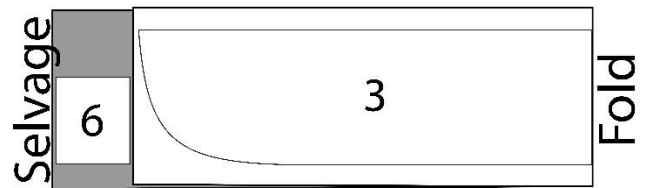
Fabric 1

44" Bolt
Use pieces 1



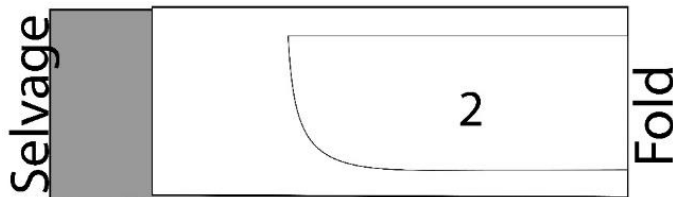
Fabric 2

44" Bolt
Use pieces 3, 6



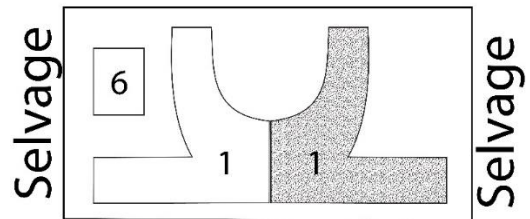
Fabric 3

44" Bolt
Use piece 2



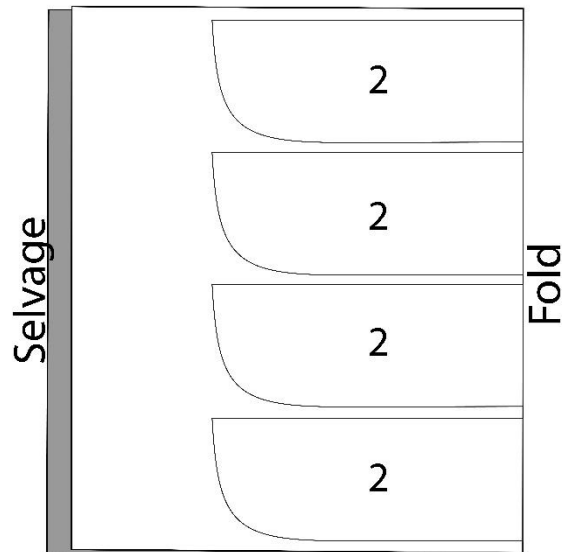
Interfacing

20" Bolt
Use pieces 1, 7



Tulle

54" Bolt Use piece 2



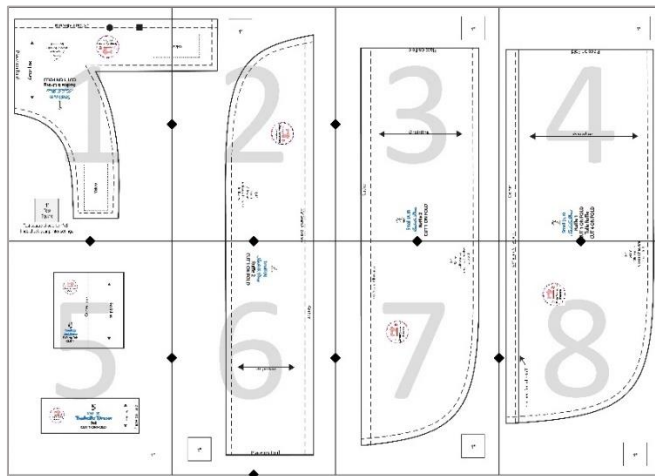
Printing/Cutting the Pattern

Tip: You can save paper & ink by only printing the pattern pieces, at which point you can read the instructions on your computer or other device. Otherwise, go ahead and print everything so you'll have it in hand when you begin to sew.

1. Print the PDF pattern without margins. **Patterns should be printed at 100% scale.**
2. Print the 1st page. With a ruler check the 1" square to be sure the measurement is still one inch. If so, you are cleared to print the remaining pattern pages. If not, adjust your print settings and try again.
3. Tape your pattern pages together matching the grid lines and black squares. Line up the lines of the pattern so that they meet but don't overlap. You may have to cut one of the pages so that cut edge is flush with the end of the drawn pattern line, but it is helpful to keep the extra paper on the second page, so you have something to stabilize the join between the two pages. When you have the lines meeting correctly, tape the two pages together. Continue this process on the remaining pattern pieces.
4. After taped all the pattern pages together, the complete pattern should look the same like the diagram below:

NOTE: Diagram below are not the original pattern pieces. Full size pieces are in a separate file. So, be sure to download all files.

Small



Medium

