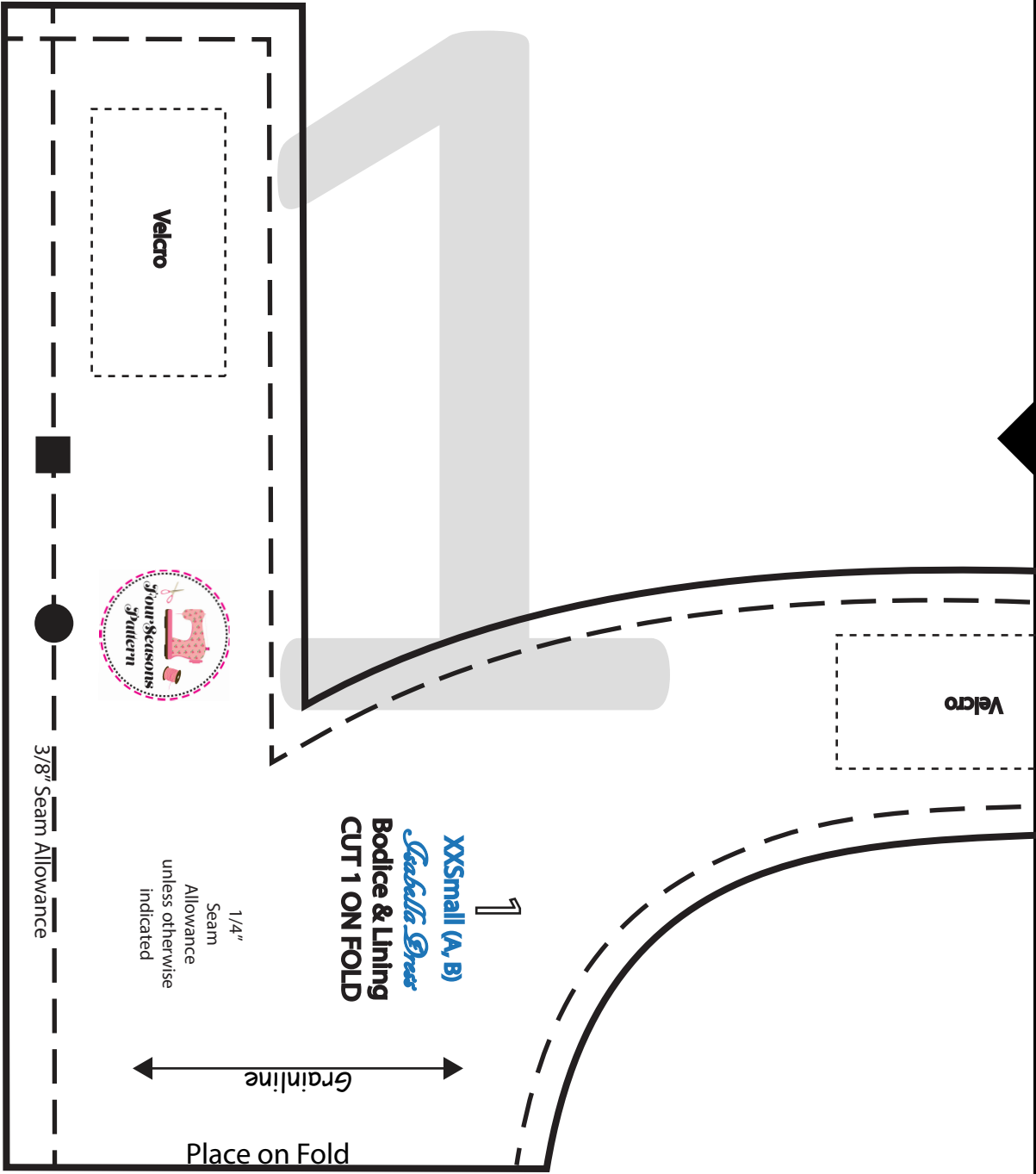
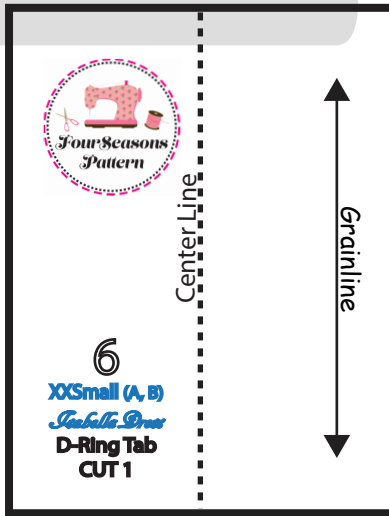
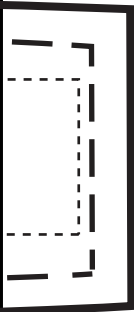
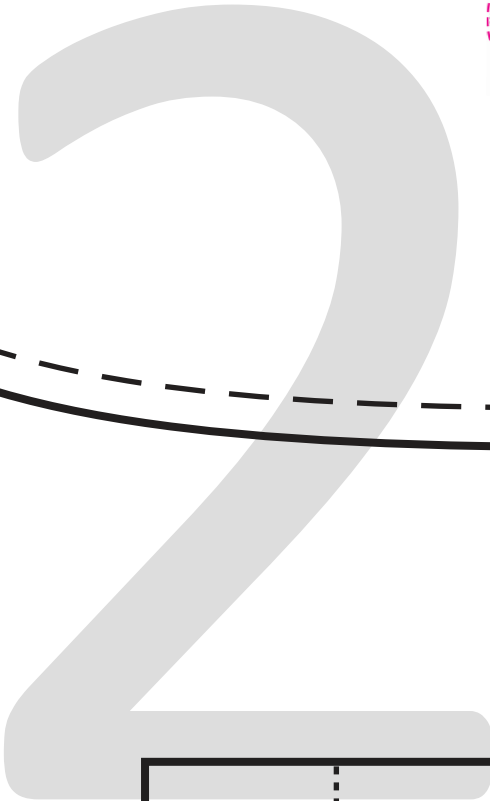


1"  
Test  
Square

Test square should be 1"x1"  
If not, check your printer settings



3/8" Seam Allowance



Gather

3

XXSmall (A, B)

*Isabella Dress*

Ruffle 2

CUT 1 ON FOLD

1/4"

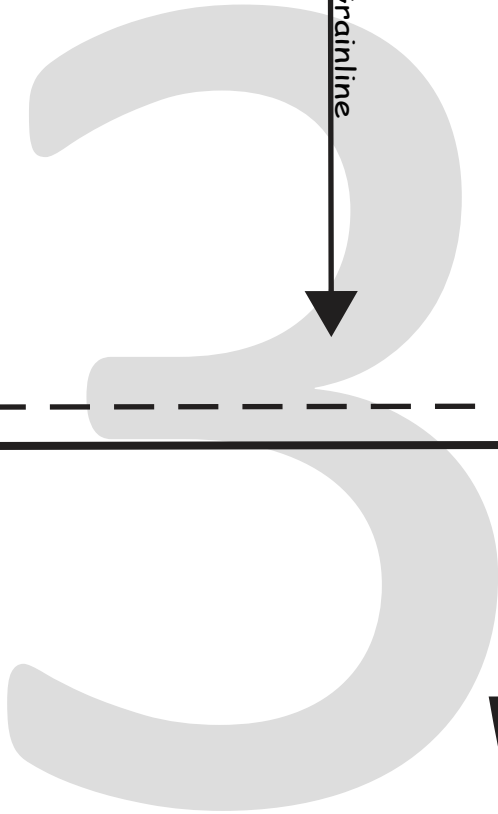
Seam

Allowance

unless otherwise  
indicated

Grainline

Place on Fold



5

XXSmall (A)

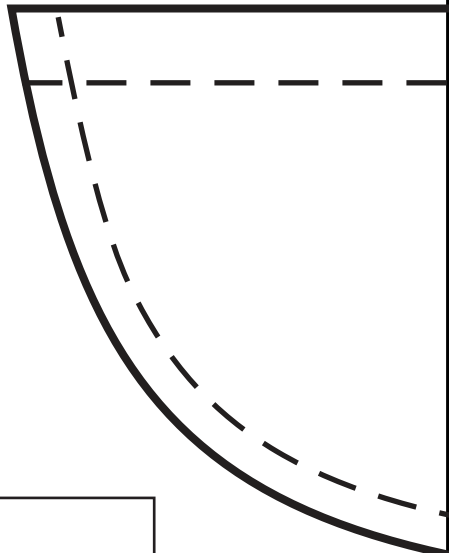
*Isabella Dress*

Belt

CUT 1 ON FOLD

Grainline

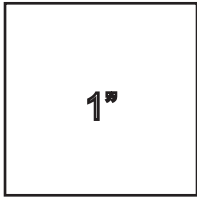
Place on Fold



1"

3/8" Seam Allowance

Cut here for Tulle Ruffle



3/8" Seam Allowance



1/4" Seam Allowance unless otherwise indicated

4  
XXSmall (A)  
**Isabella Dress**  
Ruffle 3  
CUT 1 ON FOLD

Gather

2

Small (A, B)

*Isabella Dress*

Ruffle 1

1 ON FOLD

Ruffle 2

4 ON FOLD

Grainline

Place on Fold

1/4"

Seam

allowance

unless otherwise

indicated

Gather

Grainline

Place on Fold

1"