



Four Seasons Pattern



Harness with Suspenders

Size: XXLarge

Harness A



Harness C



Take your doggy for a walk with this Vintage Inspired Harness! Harness A features suspenders made of cotton fabric which give an elegant look.

Harness B has suspenders made of suede material which give a vintage look.

Harness C features lace ruffles on suspenders and waist for a girly look.

These harnesses are decorated with buttons on the suspenders. Have Velcro closure at the neck & belly and are fully lined.

Harness B



Thank you for purchasing this pattern from Four Seasons Pattern. I hope you have a great sewing experience making an item from my pattern. ENJOY!

All designs and images are copyrighted, all rights reserved. No selling or sharing of the actual pattern/tutorial is permitted. Feel free to sell the items created with this pattern. No mass production.

If you have any question, please contact me at fourseasonspattern@yahoo.com

Copyright © Four Seasons Pattern, 2018

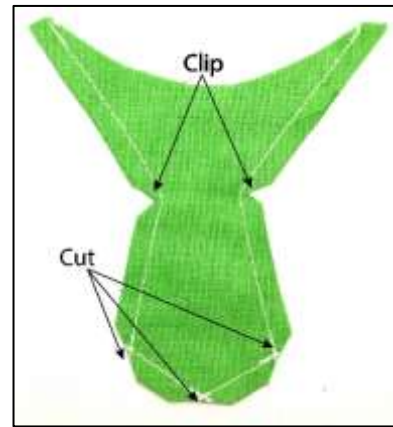
Sewing Instructions

Harness A

1. Following manufacturer's instructions, fuse interfacing to Bodice, one piece of Collar right and left, & D-ring Tab.



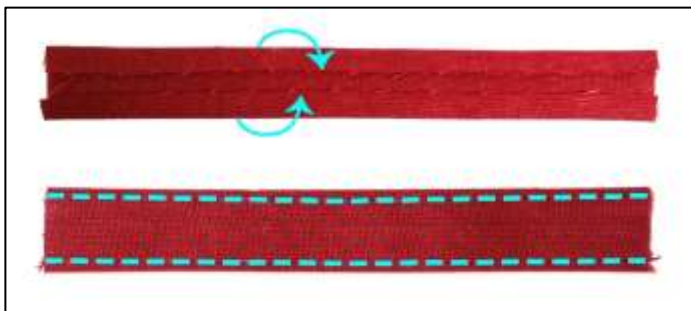
2. Right-sides together, sew tie pieces around leaving open on top edge.



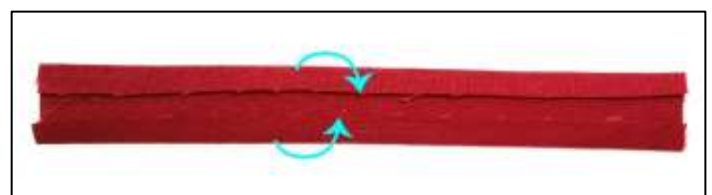
3. CUT corner; CLIP curve.



4. Turn Tie right-side out & press.



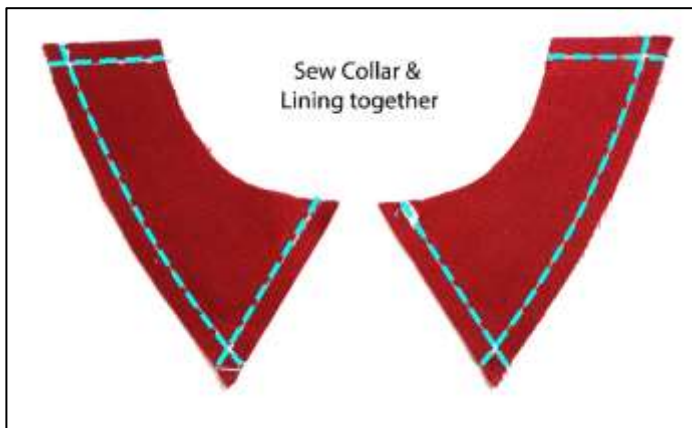
5. Fold $\frac{1}{4}$ " toward the center & press both long edges of the Suspenders.



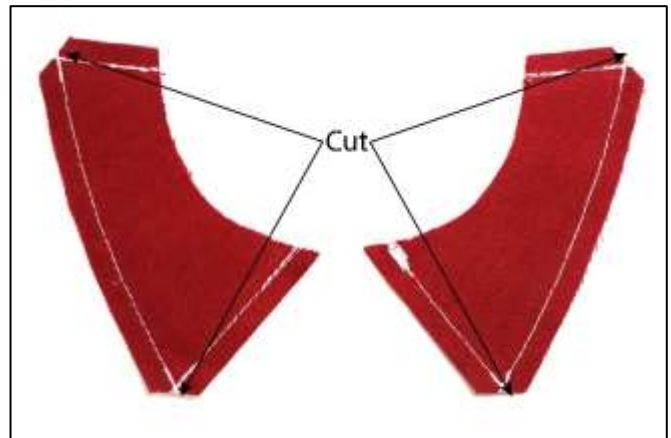
6. Fold $\frac{1}{4}$ " toward the center & press both long edges of the Belt.



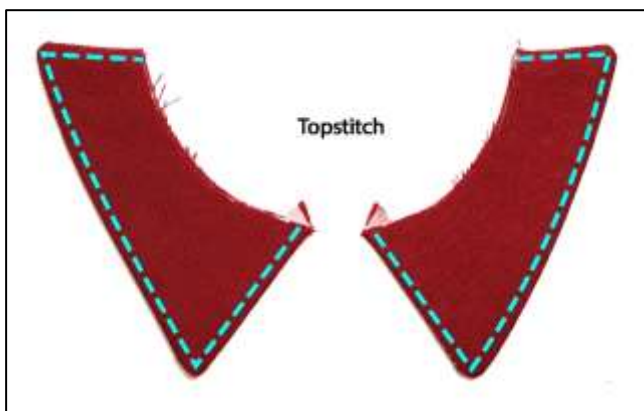
7. Take the D-Ring Tab piece and fold both long edges overlapping toward the center as shown in the picture and marked on pattern. Press.
8. EDGE STITCH both folded edges.
9. Slide the tab through D-ring and fold strap in half. Stitch across close to D-Ring.



10. With right-sides together, pin Collar and under Collar.
11. Sew leaving top edge open.



12. CUT corners.



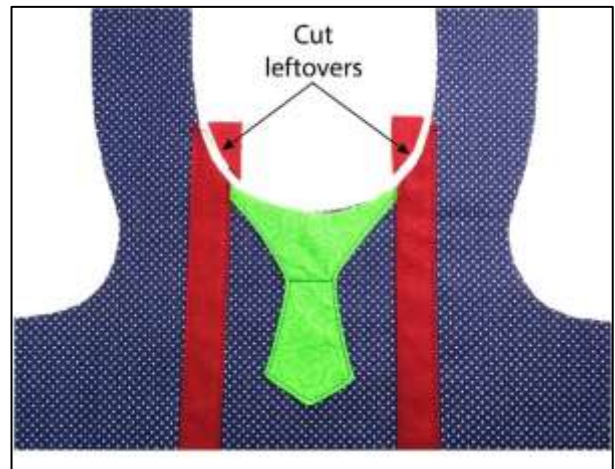
13. Turn Collars right-side out; press.
14. TOPSTITCH.



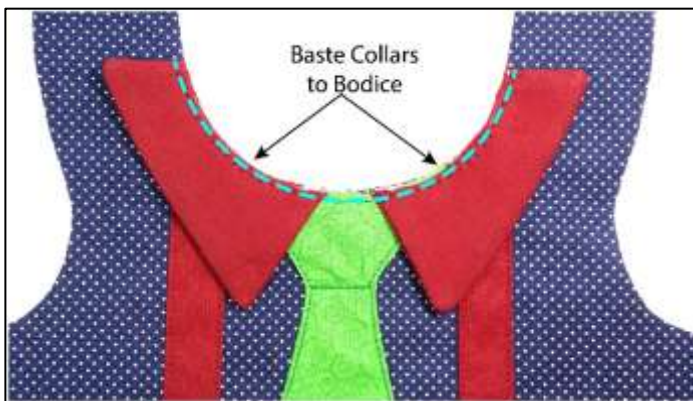
15. Place the Tie on the middle of the right-side of Bodice aligning the edges on collar line as shown in picture; pin.
16. Sew in place.



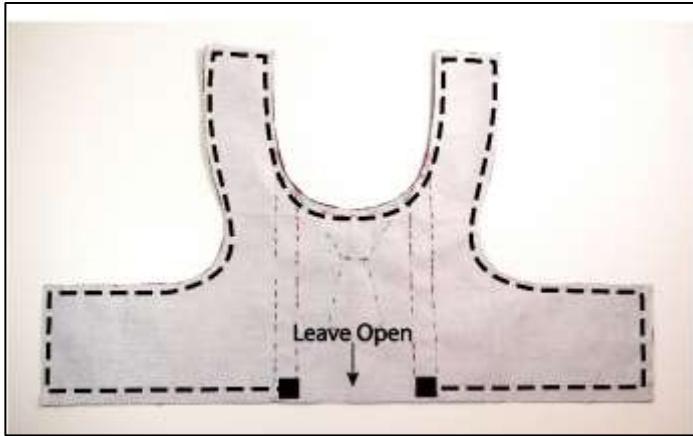
17. With right-side facing up, place the Suspenders on the right-side of Bodice (See pattern for placement). Pin.
18. EDGESTITCH both long edges.



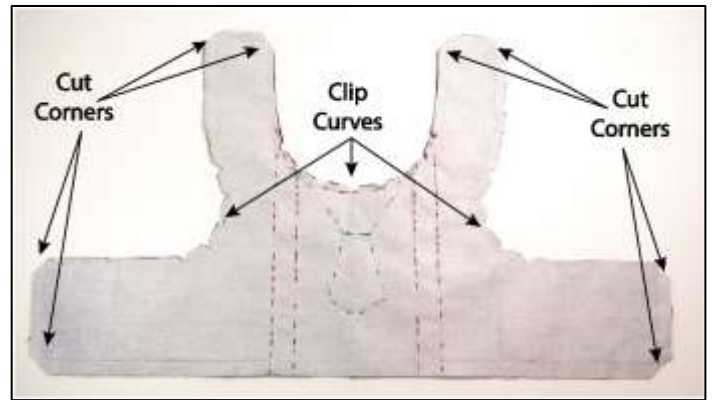
19. Cut the leavers of the Suspenders.



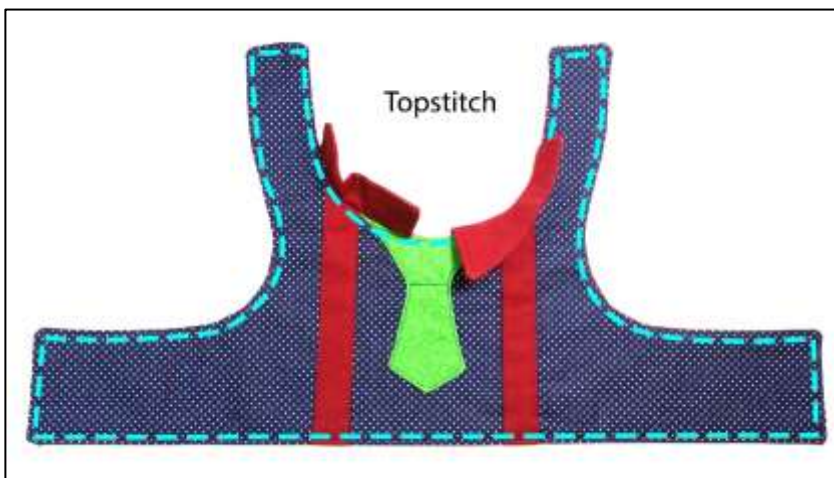
20. BASTE Collar sections to neck edge of dress (see pattern for placement). Baste at the collar raw edge.



21. With right-sides together, keeping raw edges even, pin & sew Bodice and Lining together around outside edges. Leave an opening between squares.



22. CUT corners; CLIP curves.



23. Turn Harness right-side out thru opening.
 24. Fold to inside the opening edges & press the Bodice.
 25. TOPSTITCH around Bodice edges.
 NOTE: when arriving to the Collars, unfold them out and continue topstitching close to neck edge, without catching Collars into stitching.



26. Place the D-ring Tab in the center lower edge of Bodice as shown in picture.
 27. Stitch two lines. One row at the raw edge of the tab and the second as near as the lower edge of the Bodice as possible.

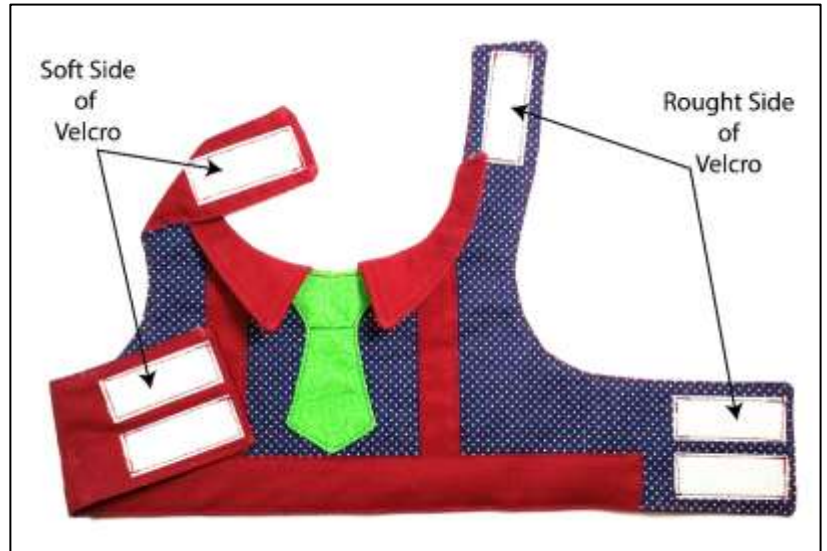


28. Fold $\frac{1}{4}$ " back the ends of the belt.
 29. Pin & EDGESTITCH Belt to Bodice between dots aligning with the waistline.

30. Sewing around edge apply Velcro to belly & neck tabs.

NOTE: The Hook (rough) side of the Velcro goes on the outer side of the Harness.

The Loop (soft) side of the Velcro goes on the underside of the opposite side of the top.



31. Sew buttons on Belt as shown in picture.
32. Hand stitch both corners of Collars to keep them folded down.



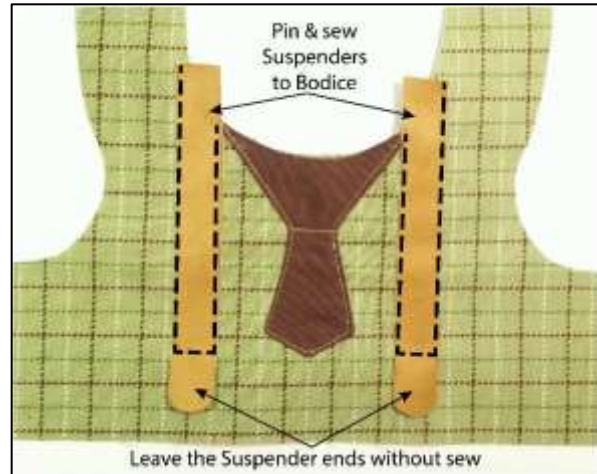
**Congratulations,
You are DONE!!!**

★**★**★**★**★**★**★**★**★**★

****Harness B****

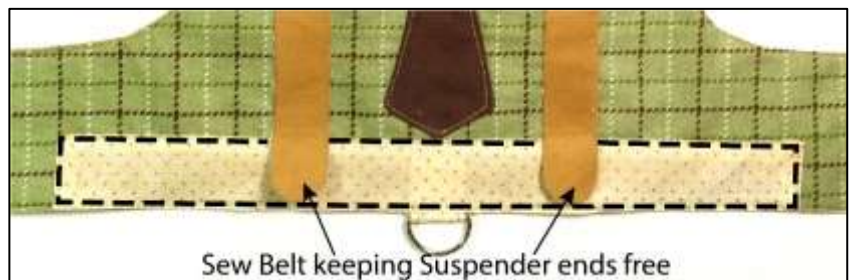
33. Follow instructions for Harness A: Steps 1 through 4.
 34. Follow instructions for Harness A: Steps 6 through 16.

35. Place Suspenders on Bodice as marked on pattern (See pattern for placement).
 36. EDGESTITCH Suspenders leaving ends without sew as shown in picture.
 NOTE: Take as reference the end point of the tie to leave the rest of the Suspenders out of the stitches.



37. Follow instructions for Harness A: Steps 19 through 27.

38. Fold Suspender ends up & pin.
 39. Fold $\frac{1}{4}$ " back the ends of the belt & pin Belt to Bodice between dots aligning with the waistline.
 40. EDGESTITCH around Belt
 NOTE: When sewing the Belt keep the Suspenders ends folded up to keep them out of stitches.



41. Unfold the Suspender ends.
 42. Follow instructions for Harness A: Steps 30 through 32.



Congratulations,
 You are **DONE!!!**

★ ★ ★ ★ ★ ★ ★ ★ ★ ★

****Harness C****

43. Follow instructions for Harness A: Steps 1 through 16.



44. Pin and BASTE Lace ruffles onto the right-side of Bodice (See pattern for placement).



45. With right-side facing up, place the Suspenders on the right-side of Bodice over the lace ruffle's edge (See pattern for placement); pin.
46. EDGESTITCH both long edges.

47. Follow instructions for Harness A: Steps 17 through 25.

48. Pin & BASTE lace ruffle on the waistline between dots.



49. Follow instructions for Harness A: Steps 26 through 32.



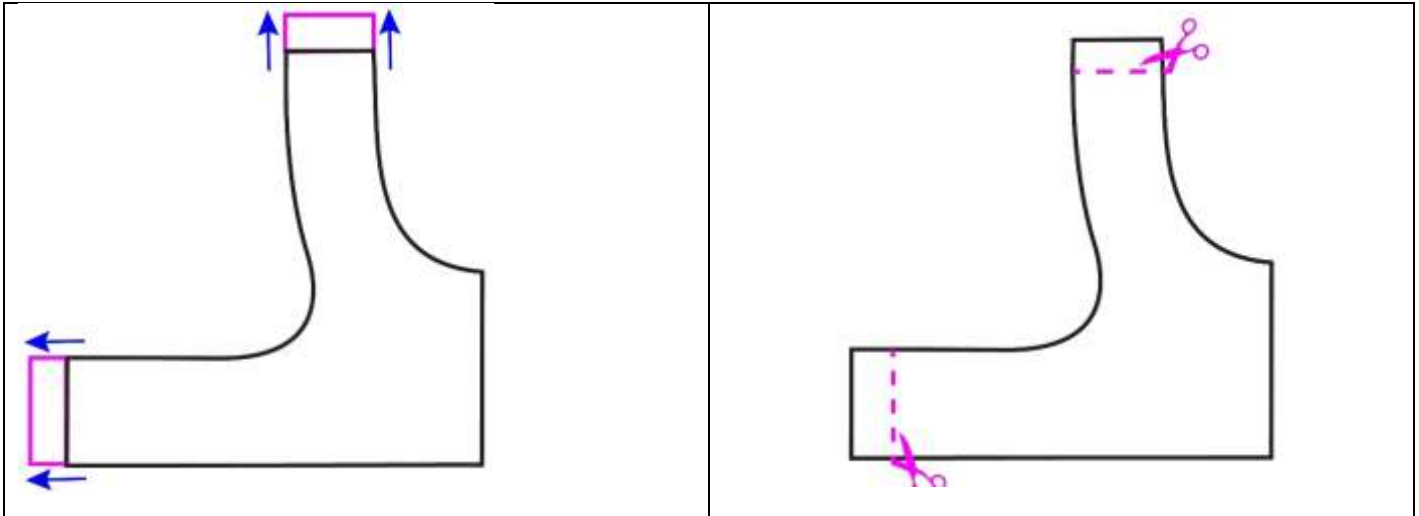
**Congratulations,
You are DONE!!!**

★★**★**★**★**

Adjusting the Pattern

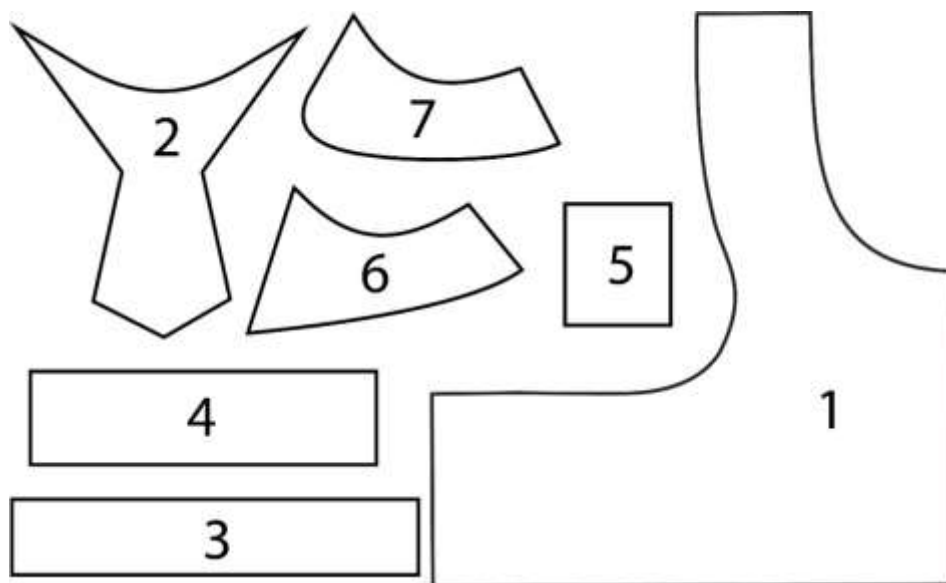
TO INCREASE WIDTH: Add to the pattern the amount needed as shown by the pink lines in this diagram.

TO DECREASE WIDTH: Cut the pattern the amount needed as shown by the pink lines in this diagram.



Pattern Pieces

- 1- Bodice / Lining (A, B, C)
- 2- Tie (A, B, C)
- 3- Suspender (A, B, C)
- 4- Belt (A, B, C)
- 5- D-ring Tab (A, B, C)
- 6- Collar (A, B)
- 7- Collar (C)

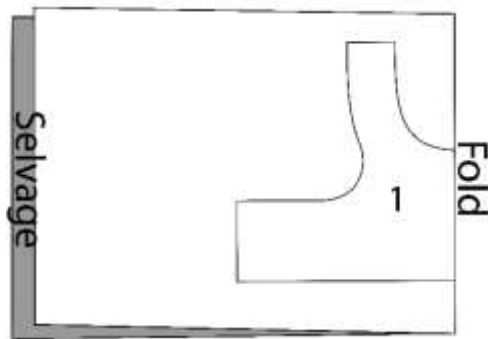


Cutting Layouts

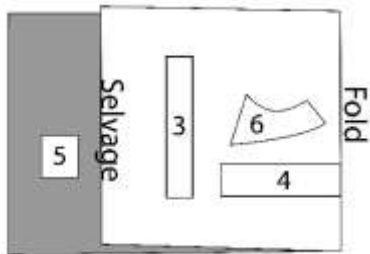
	RIGHT side of fabric		WRONG side of fabric
	RIGHT side of Pattern		WRONG side of Pattern

Harness A ** XXLarge

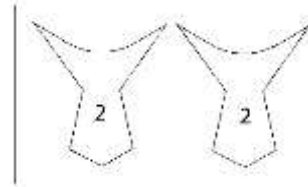
Fabric 1 / Lining
44" Bolt
Use pieces 1



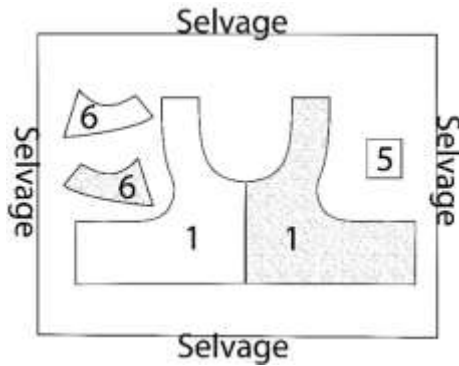
Fabric 2
44" Bolt
Use pieces 3, 4, 5, 6



Fabric for Tie
Scrap
Use piece 2



Interfacing
20" Bolt
Use pieces 1, 5, 6

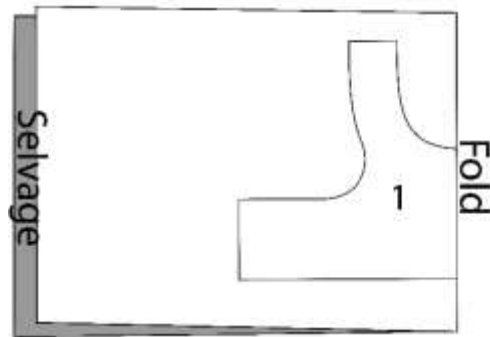


Harness B ** XXLarge

Fabric 1 / Lining

44" Bolt

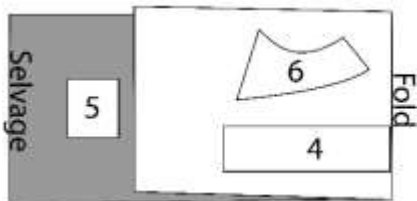
Use pieces 1



Fabric 2

44" Bolt

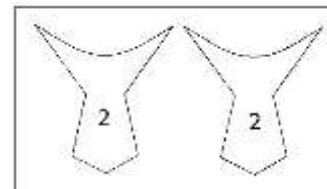
Use pieces 4, 5, 6



Fabric for Tie

Scrap

Use piece 2



Material for Suspenders (harness B)

Scrap

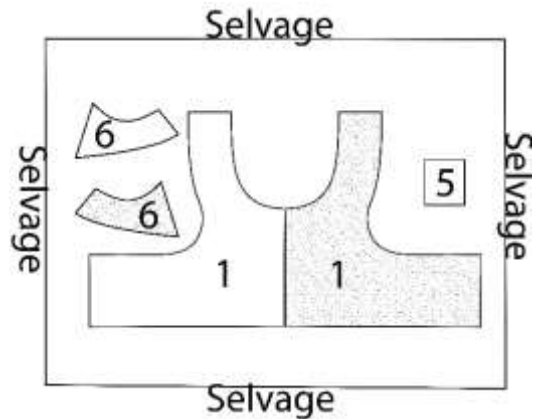
Use piece 3



Interfacing

20" Bolt

Use pieces 1, 5, 6

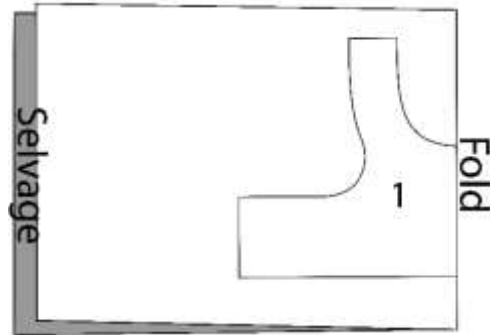


Harness C ** XXLarge

Fabric 1 / Lining

44" Bolt

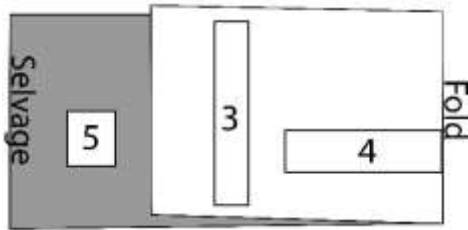
Use pieces 1



Fabric 2

44" Bolt

Use pieces 3, 4, 5



Fabric 3

44" Bolt

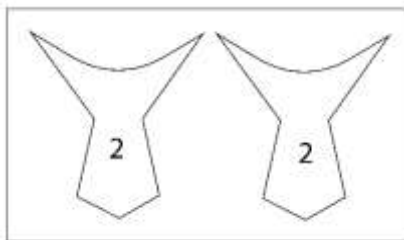
Use piece 7



Fabric for Tie

Scrap

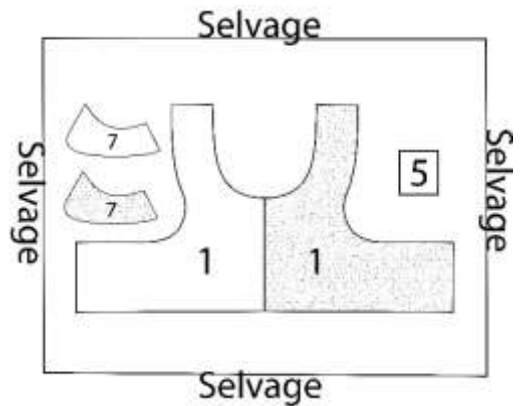
Use piece 2



Interfacing

20" Bolt

Use pieces 1, 5, 7



Printing/Cutting the Pattern

Tip: You can save paper & ink by only printing the pattern pieces, at which point you can read the instructions on your computer or other device. Otherwise, go ahead and print everything so you'll have it in hand when you begin to sew.

1. Print the PDF pattern without margins. **Patterns should be printed at 100% scale.**
2. Print the 1st page. With a ruler check the 1" square to be sure the measurement is still one inch. If so, you are cleared to print the remaining pattern pages. If not, adjust your print settings and try again.
3. Tape the Pattern Pages before cutting the Pattern Pieces and -fabric.
Tape your pattern pages together matching the grid lines and black squares. Line up the lines of the pattern so that they meet but don't overlap. You may have to cut one of the pages so that cut edge is flush with the end of the drawn pattern line, but it is helpful to keep the extra paper on the second page, so you have something to stabilize the join between the two pages. When you have the lines meeting correctly, tape the two pages together. Continue this process on the remaining pattern pieces.
4. After taped all the pattern pages together, the complete pattern should look the same like the diagram below:

NOTE: Diagram below are not the original pattern pieces. Full size pieces are in a separate file. So, be sure to download all files.

XXLarge

