

2

XXLarge (A, B, C)
Harness with Suspenders

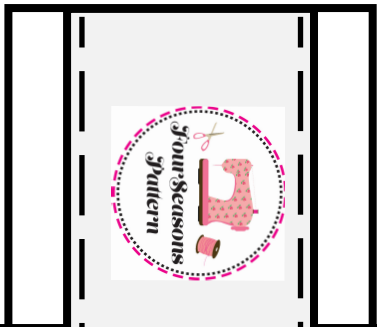
Tie
CUT 2

Grainline



1"
Test
Square

Test square should be 1"x1"
If not, check your printer settings



7

XXLarge (C)

Harness with Suspenders

Collar

CUT 4



Grainline

6

XXLarge (A, B)

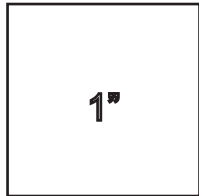
Harness with Suspender

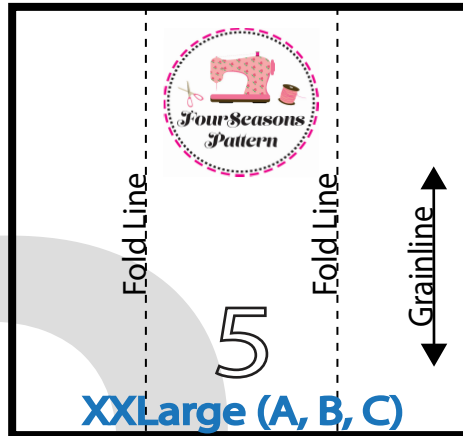
Collar

CUT 4



Grainline

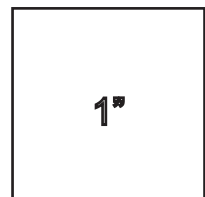
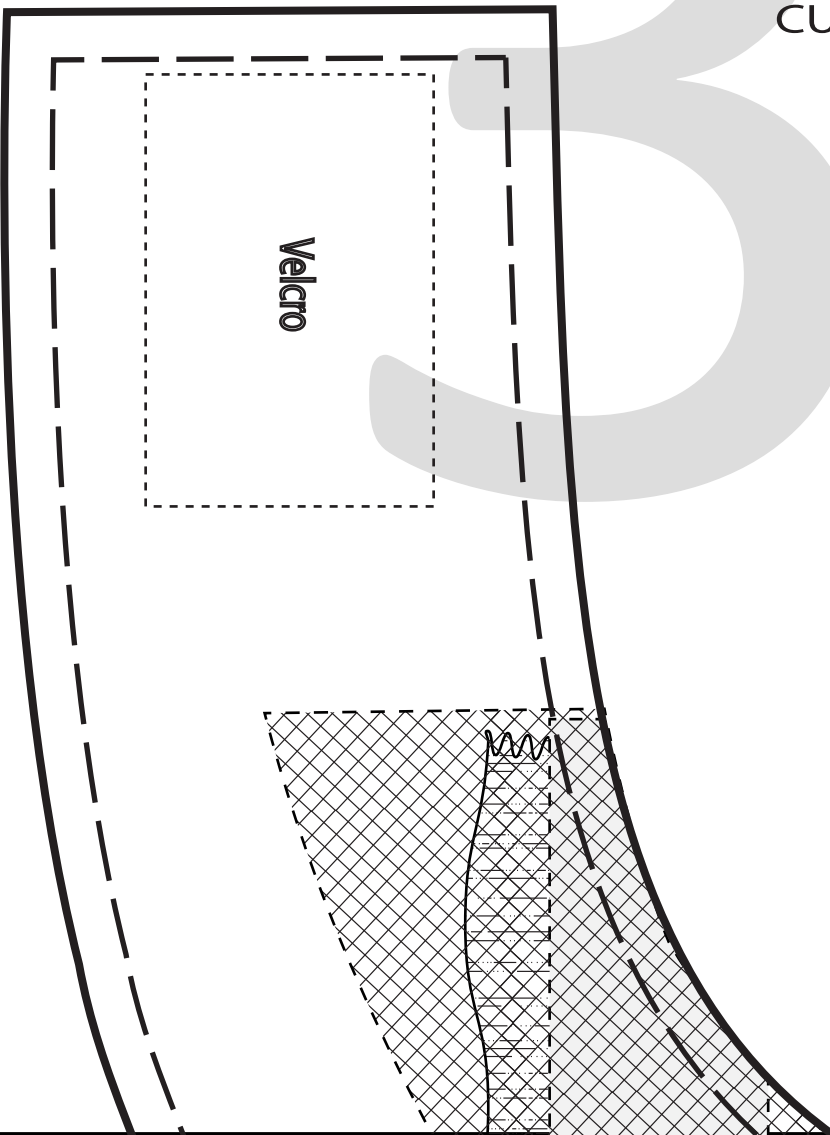




Harness with Suspenders

D-Ring Tab

CUT 1





4

XXLarge (A, B, C)

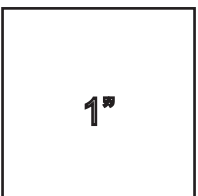
Harness with Suspenders

Belt

CUT 1 ON FOLD

Grainline

PLACE ON FOLD



Grainline

3

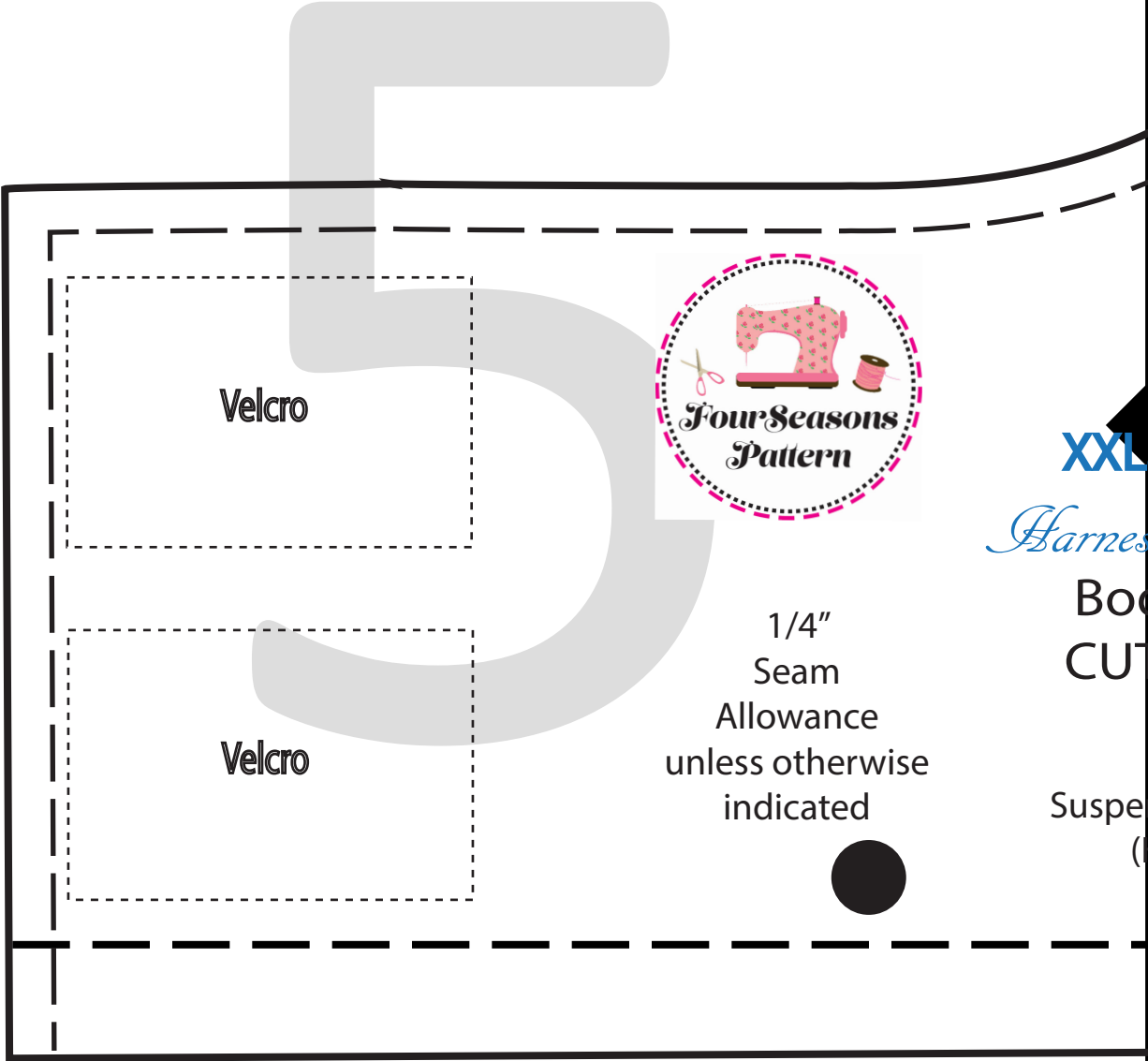
XXLarge (A, B, C)

Harness with Suspenders

Suspenders

CUT 2

Cut around this line
for Suspender
(Harness B only)



Velcro



*Four Seasons
Pattern*

1/4"
Seam
Allowance
unless otherwise
indicated

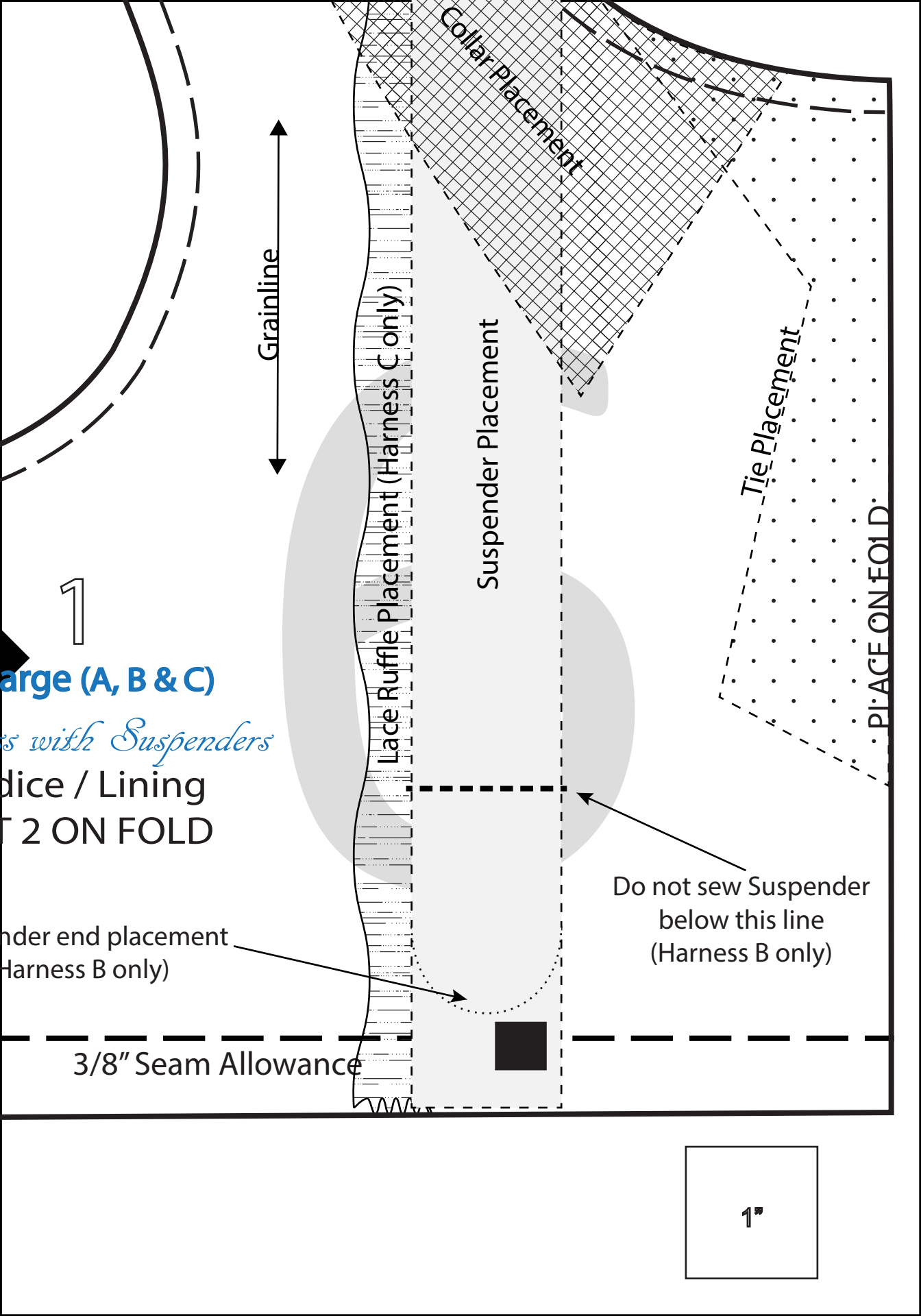


XXL

Harness

Boo
CUT

Suspe
(



1

Large (A, B & C)

with Suspenders

Collar / Lining

PLACE ON FOLD

Under end placement
(Harness B only)

3/8" Seam Allowance

Grainline

Lace Ruffle Placement (Harness C only)

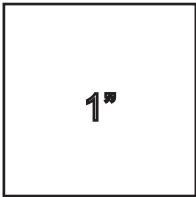
Collar Placement

Suspenders Placement

Tie Placement

PLACE ON FOLD

Do not sew Suspender
below this line
(Harness B only)



1"