

HARNESS WITH BUCKLE



This harness is fully lined. Has a parachute buckle at the collar for reinforcement & Velcro closure at the belly.

Harness A features a ruffle in the front and skirt.

Harness B has pleated skirt.

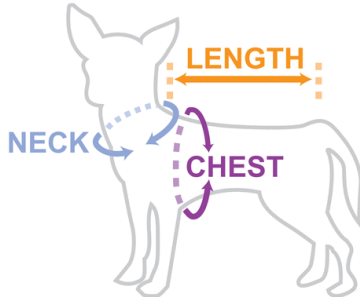
Harness C has the D-ring tab and buckle straps made of webbing instead of fabric.



Four Seasons
Pattern

ALL SIZES:
XXSmall to XXLLarge

IMPORTANT: I recommend reading through the complete directions before beginning your project.

| | |
|---|---|
| <p>Materials needed:</p> <p>Fabric, thread, Fabric Pen, Scissors, Measuring Tape or ruler, Straight Pins, Iron, Ironing Board, Sewing Machine.</p> | <p>How to measure your dog:</p>  |
| <p>Suggested Fabrics:</p> <p>Cotton and Cotton Blends, Calico, Denim, Duck Cloth.</p> | |

Body Measurements

| Size | XX-Small | X-Small | Small | Medium | Large | X-Large | XX-Large |
|--------|--------------|----------------|-------------|----------------|----------------|-------------|----------------|
| Neck | 5.75 - 7.25" | 6.75 - 8.25" | 7.50 - 9" | 8 - 9.75" | 9.25 - 11" | 10.25 - 12" | 12.25 - 14" |
| Girth | 9.5 - 11" | 10.75 - 12.50" | 12.25 - 14" | 13.50 - 15.25" | 15.25 - 17.25" | 16.75 - 19" | 19.25 - 21.50" |
| Length | 7.50 - 9" | 8.25 - 11" | 9 - 11.50" | 10.25 - 12" | 11 - 13" | 12.25 - 14" | 14 - 16" |

Fabric Yardage & Notions Requirements:

Based on a 44" Bolt

| Size | XX-Small | X-Small | Small | Medium | Large | X-Large | XX-Large |
|--|-----------------|-----------------|-----------------|-----------------|-----------------|---------------|---------------|
| <i>Harness A</i> | | | | | | | |
| Fabric 1 | 1/4 Yard | 3/8 Yard | 3/8 Yard | 3/8 Yard | 3/8 Yard | 3/8 Yard | 1/2 Yard |
| Fabric 2 | 1/4 Yard | 3/8 Yard | 3/8 Yard | 3/8 Yard | 1/2 Yard | 1/2 Yard | 5/8 Yard |
| <i>Harness B</i> | | | | | | | |
| Fabric 1 | 1/4 Yard | 3/8 Yard | 3/8 Yard | 3/8 Yard | 3/8 Yard | 3/8 Yard | 1/2 Yard |
| Fabric 2 | 1/4 Yard | 1/4 Yard | 1/2 Yard | 1/2 Yard | 1/2 Yard | 5/8 Yard | 5/8 Yard |
| <i>Harness C</i> | | | | | | | |
| Fabric 1 | 1/4 Yard | 1/4 Yard | 3/8 Yard | 3/8 Yard | 3/8 Yard | 3/8 Yard | 1/2 Yard |
| Fabric 2 | 1/4 Yard | 1/4 Yard | 3/8 Yard | 3/8 Yard | 3/8 Yard | 3/8 Yard | 1/2 Yard |
| Polyester Webbing | 1/2 x 12 Inches | 1/2 x 13 Inches | 3/4 x 15 Inches | 3/4 x 16 Inches | 3/4 x 18 Inches | 1 x 20 Inches | 1 x 22 Inches |
| | | | | | | | |
| Interface (Based on 20" Bolt) for Harness A, B & C | 3/8 Yard | 1/2 Yard | 5/8 Yard | 3/4 Yard | 3/4 Yard | 1 1/8 Yard | 1 1/4 Yard |

| Notions | |
|--|---------------|
| <i>HARNESS A, B & C</i> | |
| D-Ring: ½" for XXS & XS, ¾" for S, M & Lg, 1" for XXL | |
| Parachute Buckle (female & male): ½" for XXS & XS, ¾" for S, M & Lg, 1" for XXL | |
| VELCRO for <i>Harness A, B & C</i> (2 Hook & 2 Loop strips are needed for each dress) | |
| Size | Wide x Length |
| XXSmall, XSmall | ¾" x 1 ½" |
| Small, Medium | 1" x 2" |
| Large, XLarge | 1 ½" x 2" |
| XXLarge | 2" x 2 ¼" |

Sewing Information:

- Seam Allowances are included in patterns.
- Use 1/4" seam allowance on all seams unless otherwise indicated.
- Mark all Circles, Squares or Lines, etc. on WRONG side fabric, unless noted otherwise.
- Pin or baste seams, Right-Side together.
- Press all seam allowances as indicated in instructions.

Glossary

Sewing terms appearing in CAPITAL in Sewing Instructions.

BASTE - Stitch along seam line, using long machine stitches. Pull thread ends to adjust the fit.

SLIPSTITCH - Stitch done by hand.

TOPSTITCH - Stitching 1/8" closer to edge with right side of fabric facing up.

EDGESTITCH - Stitch close to finished edge or seam.

FINISH EDGE - Use a zigzag stitch or serge raw edges of fabric.

GATHER - Loosen top tension, set machine for longest stitch. Sew two rows of stitching within seam allowance. Pull thread ends, adjusting gathers evenly.

TRIM CORNERS - Trim excess fabric from outside corners.

CLIP CURVES - Clip outside curves and notch inside curves.

GRAINLINE - Place on straight grain of fabric, parallel to selvage or fold.

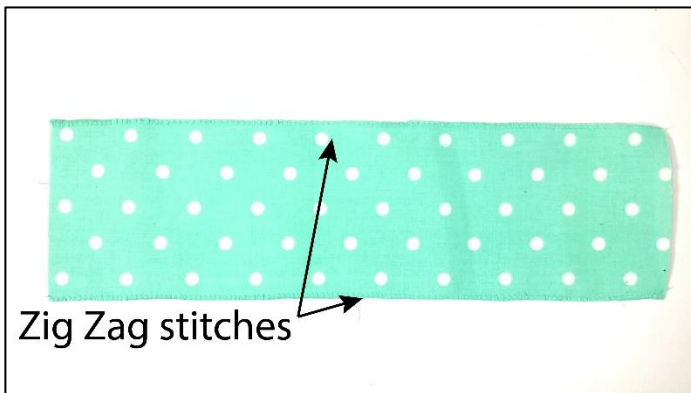
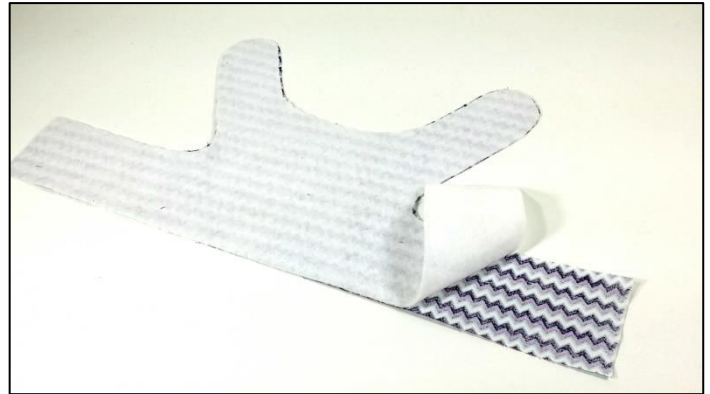
CENTER FRONT - Place line of pattern on fold of fabric.

←————→ Grainline - Place on straight grain of fabric, parallel to selvage or fold.

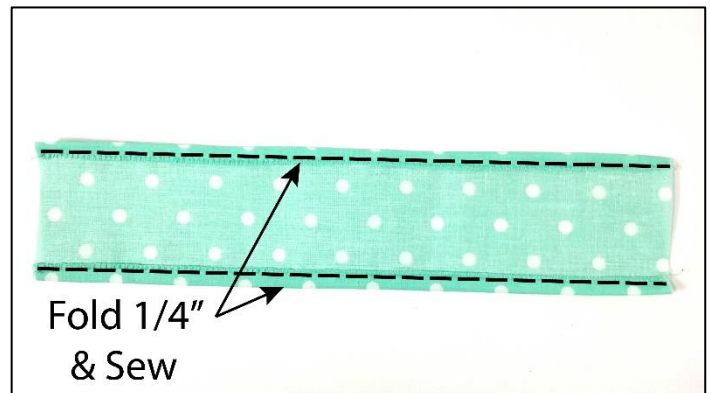
Sewing Instructions

HARNESS A

1. Following manufacturer's instructions, fuse Interfacing Fleece to Bodice and Lining.



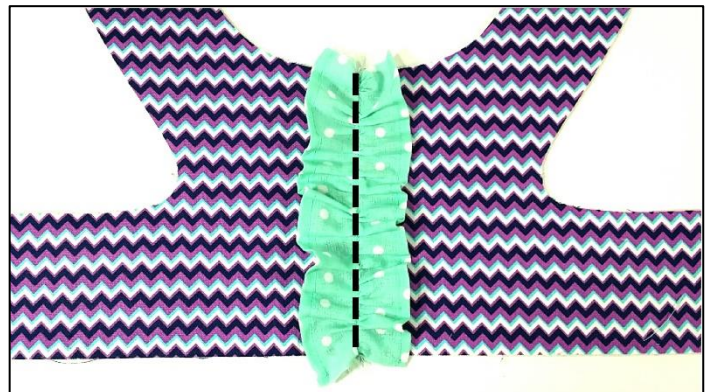
2. Finish long edges of Ruffle with small zigzag stitches or serger.



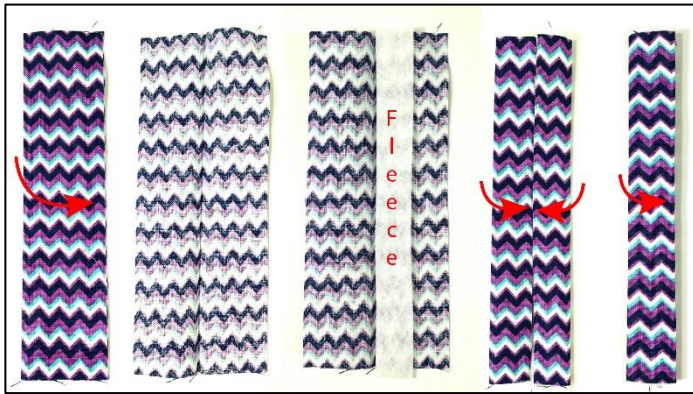
3. Fold up $\frac{1}{4}$ " and sew hem on both long edges.



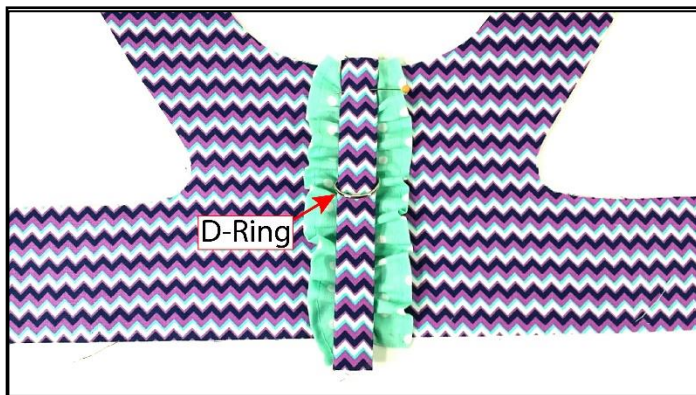
4. Gather Ruffles in the center to fit on Bodice front center line



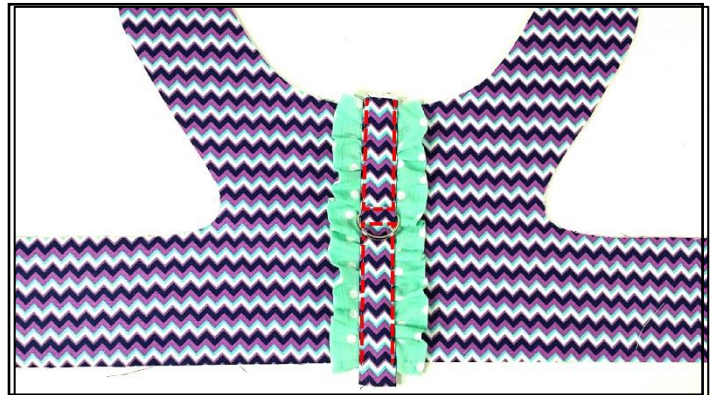
5. Pin and Sew Ruffle onto the front center of Bodice.



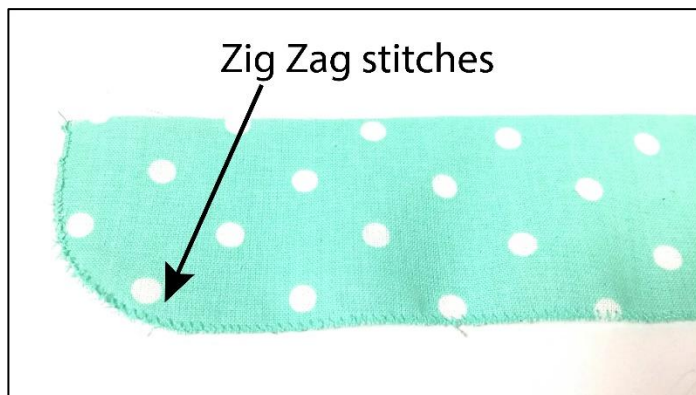
6. Take the D-Ring Tab piece and fold in half length-wise; press.
7. Open it up.
8. Place the Fleece Strip on the fabric, to the right of the center fold.
9. Fold & press both long edges to the center fold.
10. Fold again to fold it in half; press.



11. Slide the Tab through D-Ring and place it as marked on the pattern.
12. Place the Tab in the middle of the Ruffle; pin.



13. Sew the half top and bottom of the Tab forming rectangles as pictured.
NOTE: Do not stitch over the D-Ring.



14. Round corner of ruffle & finish edge of Ruffle Skirt with small zigzag stitches or serger.



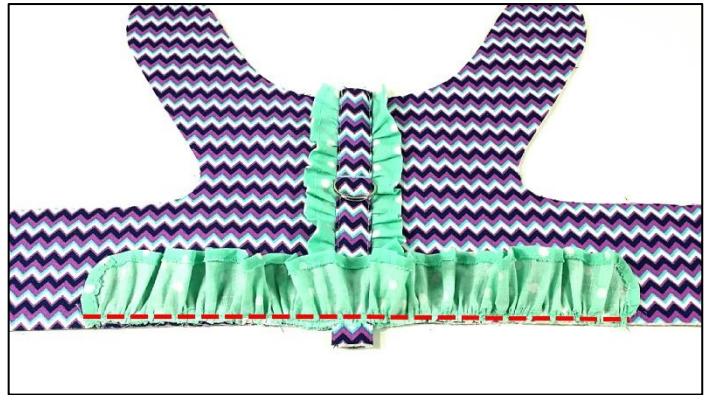
15. Fold up $\frac{1}{4}$ " and sew hem.



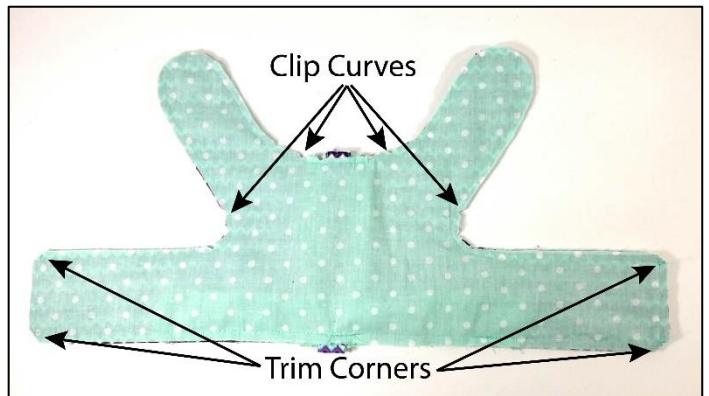
16. Gather Ruffle Skirt to fit between dots marked on pattern.



17. Right-sides together, pin & sew gathered Skirt to Bodice between dots marked at waistline.



18. With right-sides together, keeping raw edges even, pin & sew Bodice and Lining together around outside edges. Leave an opening between squares.



19. CUT corners; CLIP curves.



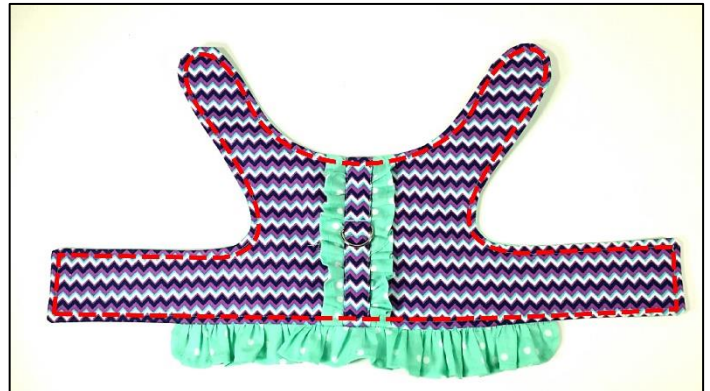
20. Turn Bodice right-side out thru opening;
Press.



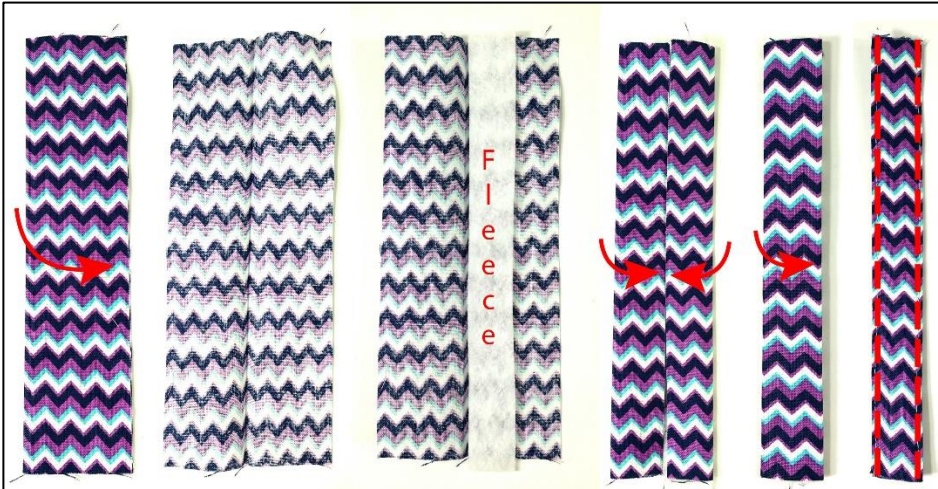
Hand Stitch

21. Fold to inside 3/8" hem of Bodice opening;
press.
22. Pin Bodice Lining hem over waist seam and
hand sew to cover seam.

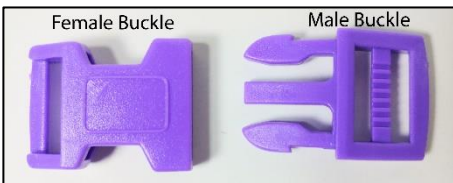
23. TOPSTITCH around Bodice edges.



24. Reinforce sewing back and forth 2 or 3 times over horizontal stitches above and below
the D-Ring for added security.



25. Take the Buckle Strap piece and fold in half length-wise; press.
26. Open it up.
27. Place the Fleece Strip on the fabric, to the right of the center fold.
28. Fold & press both long edges to the center fold.
29. Fold again to fold it in half; press.
30. Edgestitch length-wise both edges.



Parachute Buckle



31. Attach "male" buckle: Hold buckle, so it's face up. The fabric strip will come from underneath through the slot closet to the teeth and back down through the 2nd slot.



32. Fold back one end $\frac{1}{2}$ " of the back side.
33. Fold the Tab and place the ends together; pin.



34. Place the Tab loop in place as marked in pattern; Pin.
35. Sew forming a square and an X as pictured.



36. Attach "Female" Buckle. Hold buckle so it's face up and insert fabric through the top of slot and out the back side.



37. Repeat Steps 25 to 36 to make the second Buckle-Strap.

38. Sewing around edge apply Velcro to belly band.

NOTE: The Hook (rough) side of the Velcro goes on the outer side of the dress.

The Loop (soft) side of the Velcro goes on the underside of the opposite side of the top.

TIP: If you don't found the Velcro in the wide needed, for the medium to xx-large sizes, then sew two $\frac{3}{4}$ " Velcro strips.

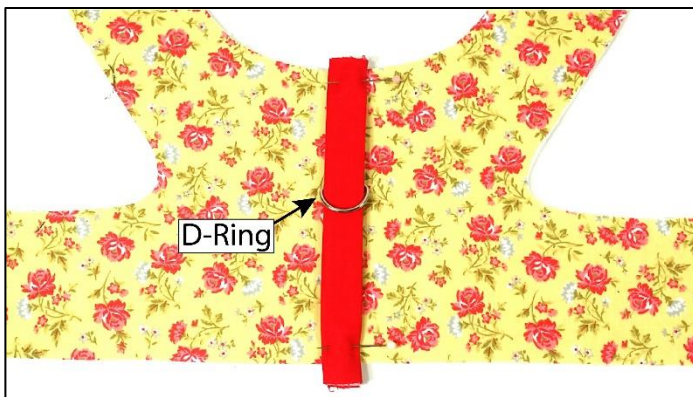


Congratulations,
You are DONE!!!

****HARNESS B****

39. Following manufacturer's instructions, fuse Interfacing Fleece to Bodice and Lining.

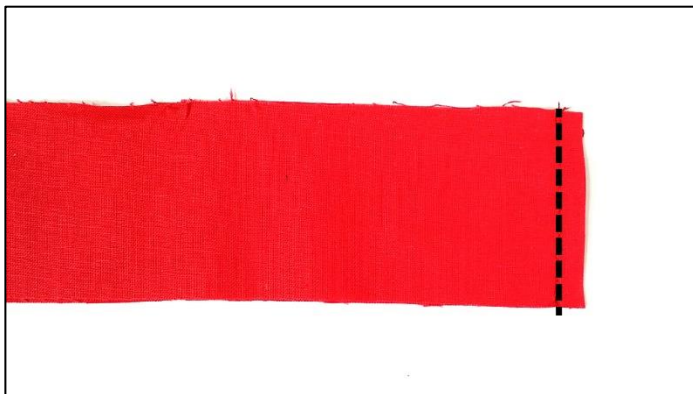
40. To make the D-Ring Tab, follow instructions for Harness A: Step 6 to 10



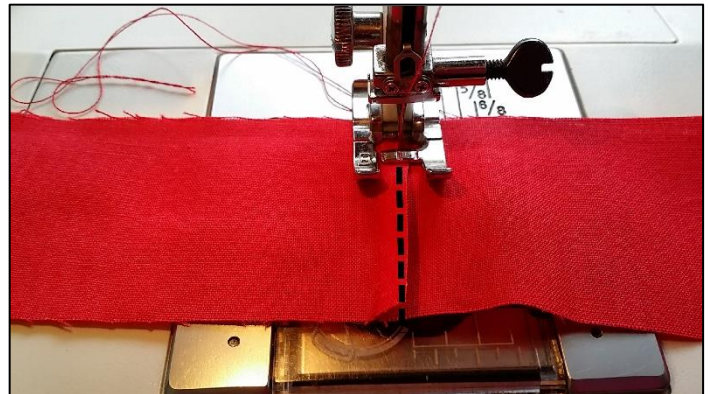
41. Slide the Tab through D-Ring and place it as marked on this picture.
42. Place the Tab in the middle of the Bodice; pin.



43. Sew the half top and bottom of the Tab forming rectangles as pictured.
NOTE: Do not stitch over the D-Ring.

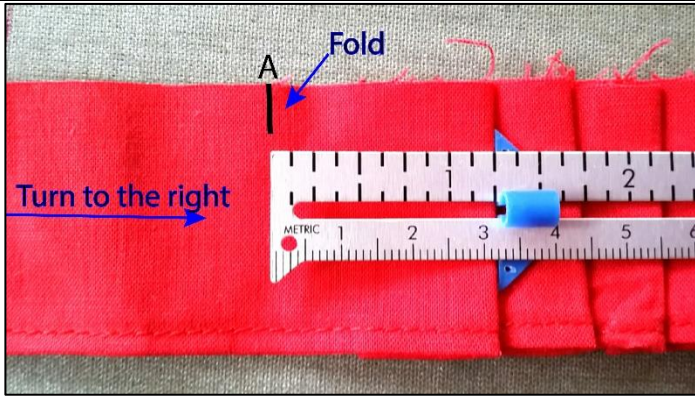


44. Sew together the pieces for the Skirt.



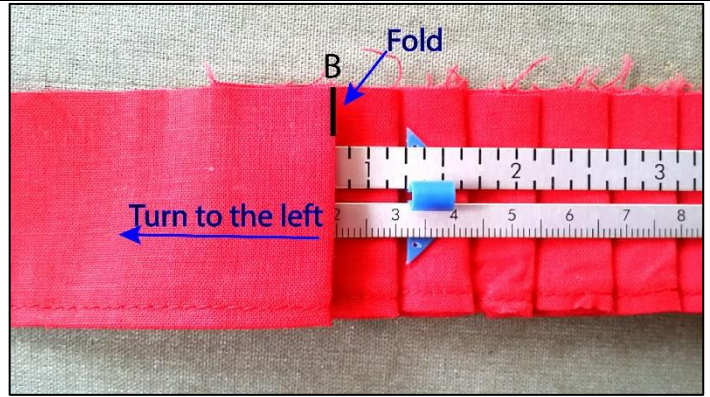
45. Open it and press the seam to the right.
46. EDGESTITCH the seam to keep it flat.

47. Make the Skirt hem, following instructions for Harness A: Steps 14 & 15.

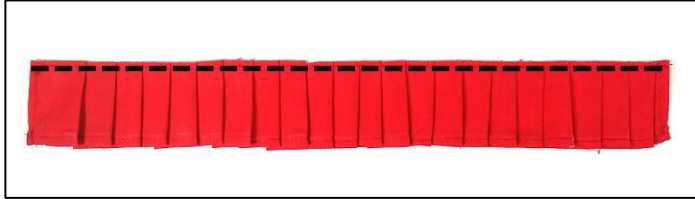


- 48. Place your skirt piece right-side up with the hem at the bottom.
- 49. Place marks on the right-side of the fabric, starting on the right edge.
- 50. Fold the fabric on A, turning fabric to the right, press.

NOTE: The rule measures showing in the picture are just examples. Mark the lines with letter A & B as marked in the pattern.



- 51. Fold the fabric on B, turning fabric to the left. press and so on. Keep pleating to the end.



- 52. Stitch across the tops of the pleats along 1/4" seam allowance.
- 53. Press the pleats again.



- 54. Right-sides together, pin & sew Pleated Skirt to Bodice between dots marked at waistline.

- 55. Follow instructions for Harness A: Steps 18 to 38.



Congratulations,
You are DONE!!!

***★**★**★**★**★**

****HARNESS C****

Polyester Webbing: Cut 2 pieces for the buckle straps and 1 piece for the D-Ring Tab.

| SIZE | BUCKLE STRAPS | D-RING TAB |
|---------|---------------|------------|
| XXSmall | 3.25" long | 5" long |
| XSmall | 3.50" long | 5.50" long |
| Small | 4" long | 6" long |
| Medium | 4.50" long | 6.75" long |
| Large | 5" long | 7.25" long |
| XLarge | 5.50" long | 8.25" long |
| XXLarge | 6" long | 9.25" long |

56. Following manufacturer's instructions, fuse Interfacing Fleece to Bodice and Lining.
57. Cut the webbing according to the chart above.



58. Slide the Tab through D-Ring and place it as marked on the pattern.

59. Place the Tab in the middle of the Ruffle; pin.

60. Sew the half top and bottom of the Tab forming rectangles as pictured Step 10.

NOTE: Do not stitch over the D-Ring.



61. Follow instructions for Harness A: Steps 18 to 24.



62. Follow instructions for Harness A: Steps 31 to 38.

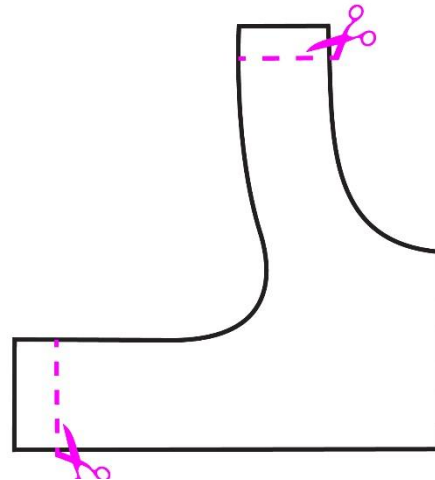
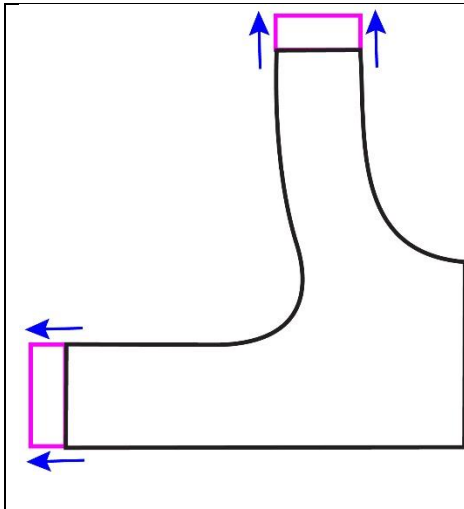


Congratulations,
You are DONE!!!

Adjusting The Pattern

TO INCREASE WIDTH: Add to the pattern the amount needed as shown by the pink lines in this diagram.

TO DECREASE WIDTH: Cut the pattern the amount needed as shown by the pink lines in this diagram.



Thank you for purchasing this pattern from Four Seasons Pattern. I hope you have enjoyed your sewing experience. Feel free to sell the items created with this pattern. No mass production.

All designs and images are copyrighted, all rights reserved. No selling or sharing of the actual pattern is permitted.

Copyright © Four Seasons Pattern, 2017

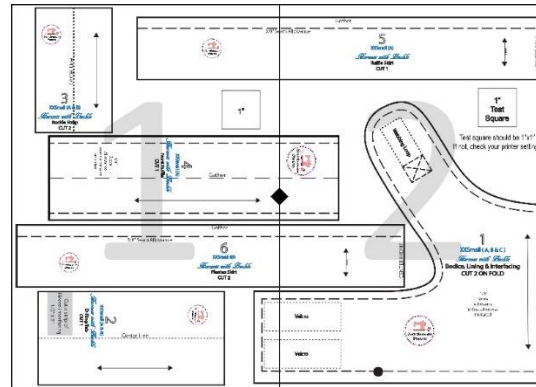
If you have any question, please contact me at fourseasonspattern@yahoo.com

Printing/Cutting the Pattern

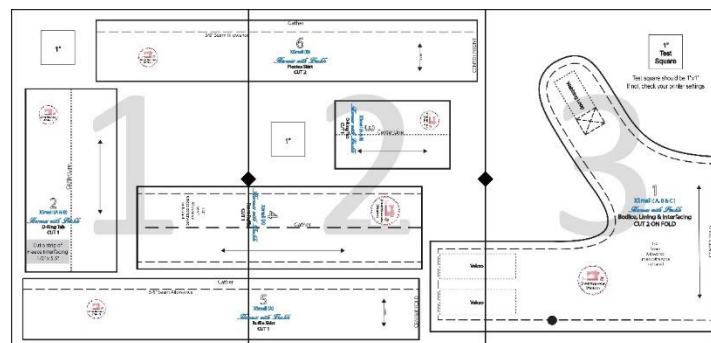
1. Print the PDF pattern without margins.
Patterns should be printed at 100% scale.
2. Check the 1" square after printing.
3. Cut each page around the black page border.
4. Tape your pattern pages together matching the grid lines and small black squares located in the four sides.
5. After taped all the pattern pages together, the complete pattern should look the same like the diagram below.

NOTE: The diagram below is not the original pattern pieces. It is an example only. The pattern pieces are in a separate file. So, be sure that you downloaded all the files.

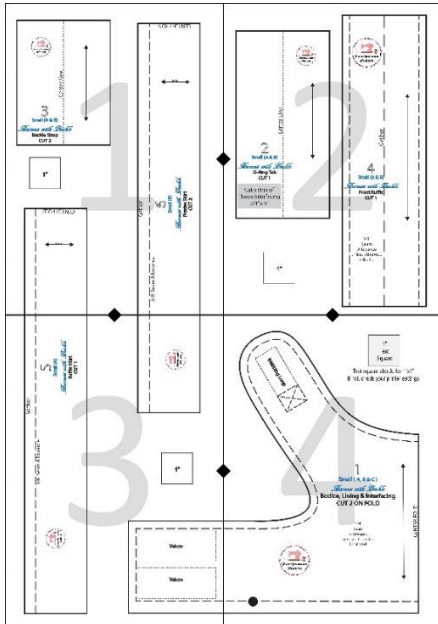
XXSmall



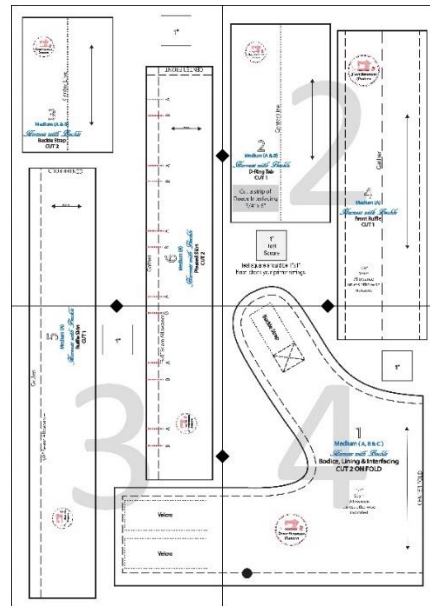
XSmall



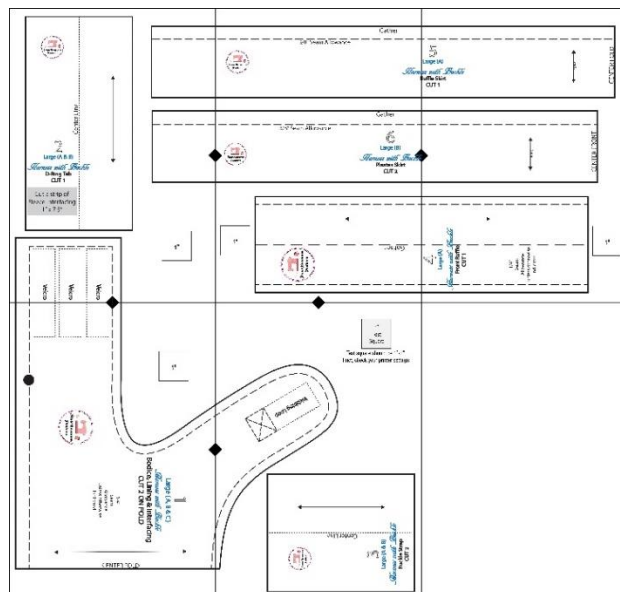
Small



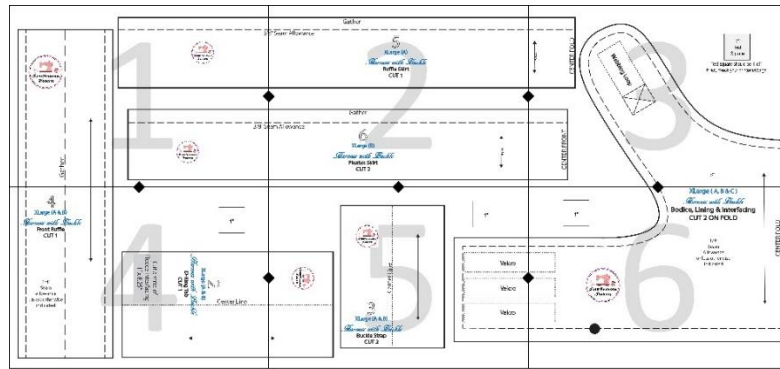
Medium



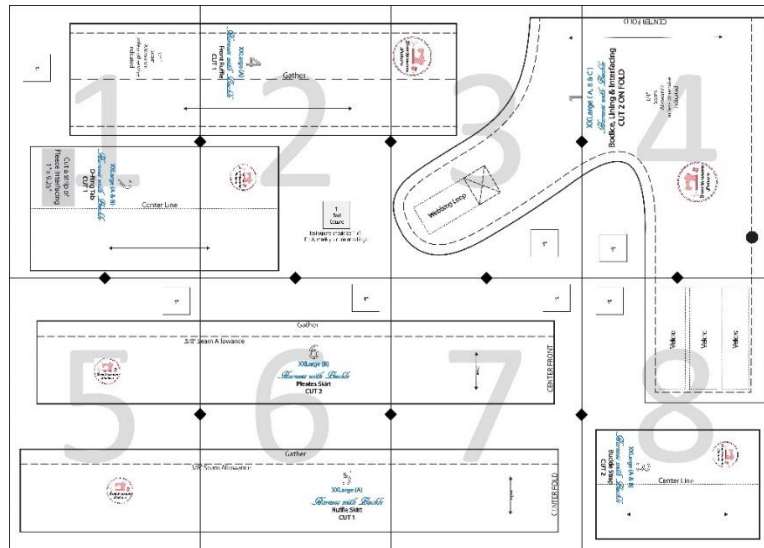
Large



XLarge

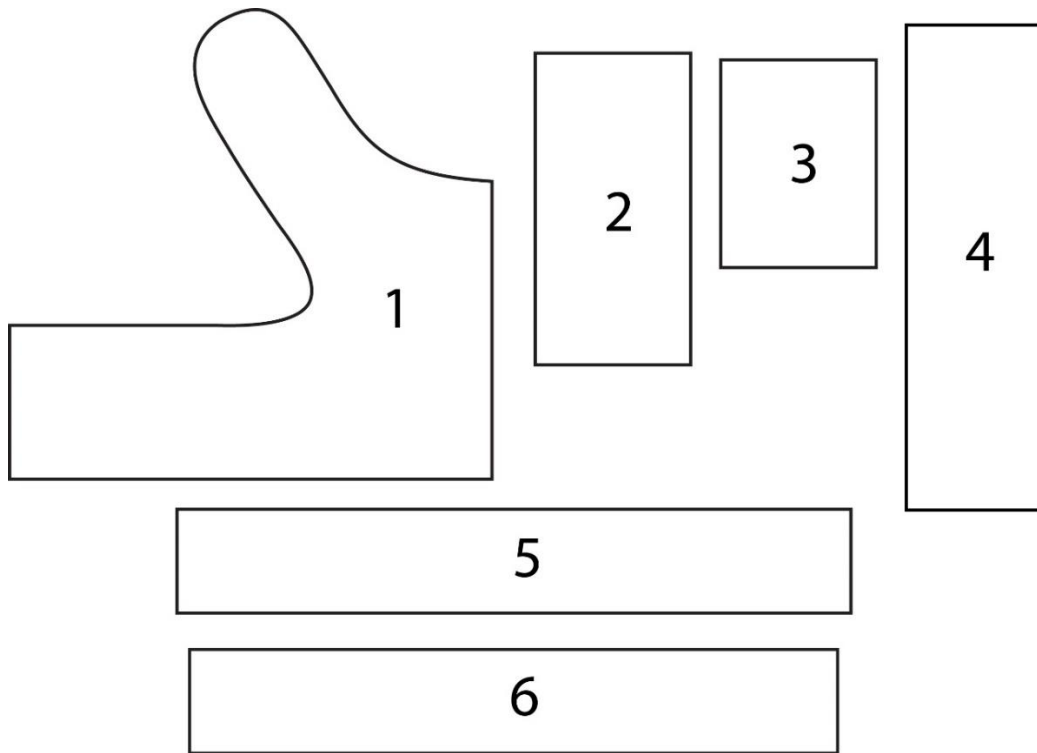


XXLarge

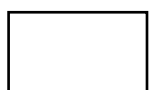


Pattern Pieces

- 1- Bodice/Lining/Interfacing (A, B, C)
- 2- D-Ring Tab (A, B)
- 3- Buckle Strap (A, B)
- 4- Front Ruffle (A, B)
- 5- Ruffle Skirt (B)
- 6- Pleated Skirt (B)



Cutting Layouts



RIGHT side of fabric



WRONG side of fabric



RIGHT side of Pattern



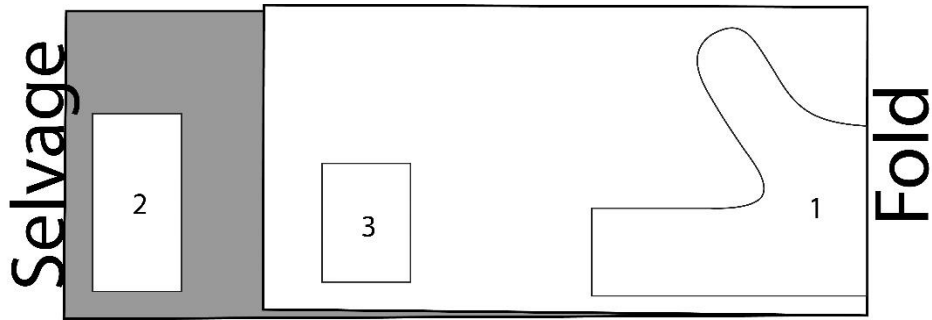
WRONG side of Pattern

Harness A ** XXSmall & XSmall

Fabric 1

44" Bolt

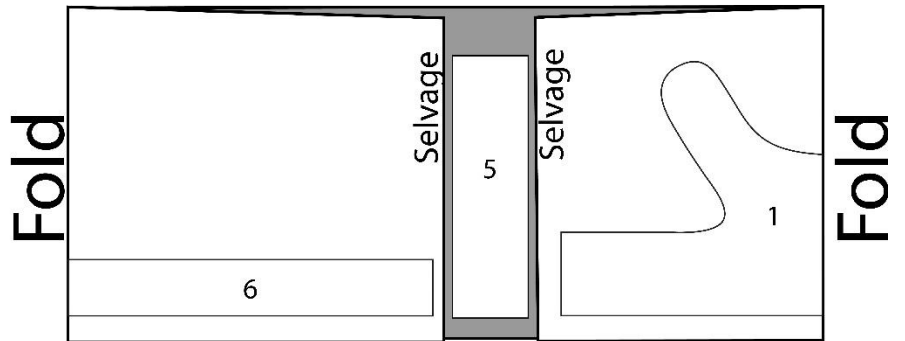
Use pieces 1, 2, 3



Fabric 2

44" Bolt

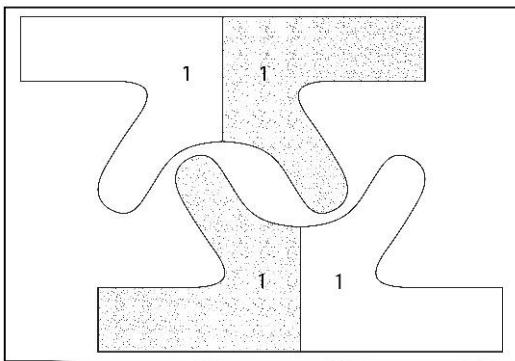
Use pieces 1, 5, 6



Interfacing

20" Bolt

Use pieces 1

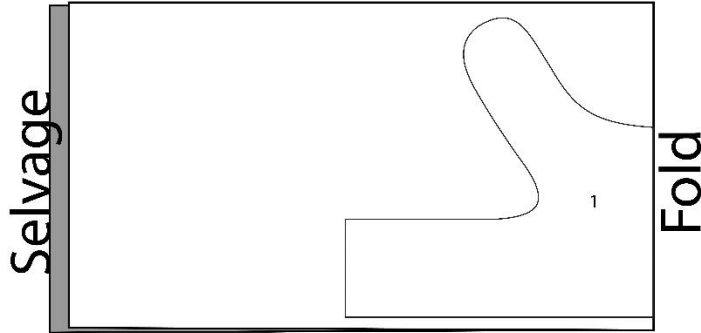


Harness B ** XXSmall & XSmall

Fabric 1

44" Bolt

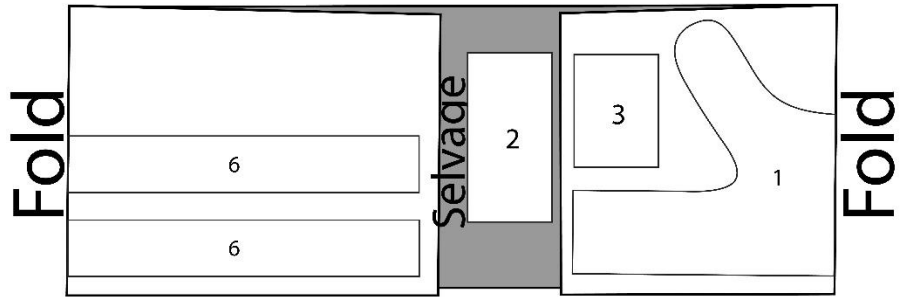
Use pieces 1



Fabric 2

44" Bolt

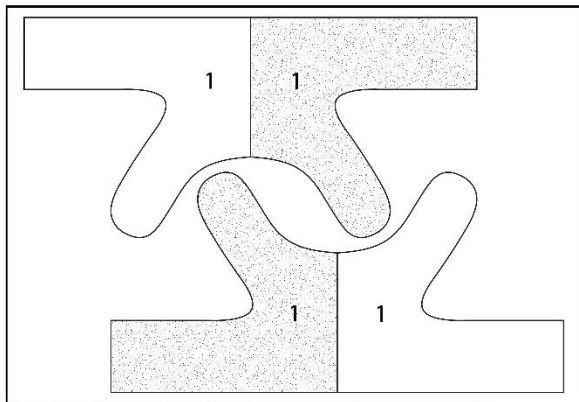
Use pieces 1, 2, 3, 6



Interfacing

20" Bolt

Use pieces 1

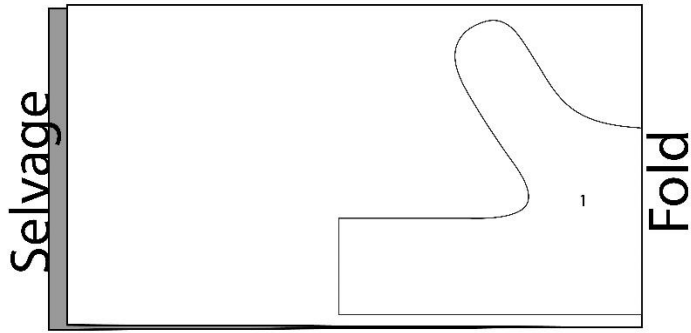


Harness C ** XXSmall & XSmall

Fabric 1

44" Bolt

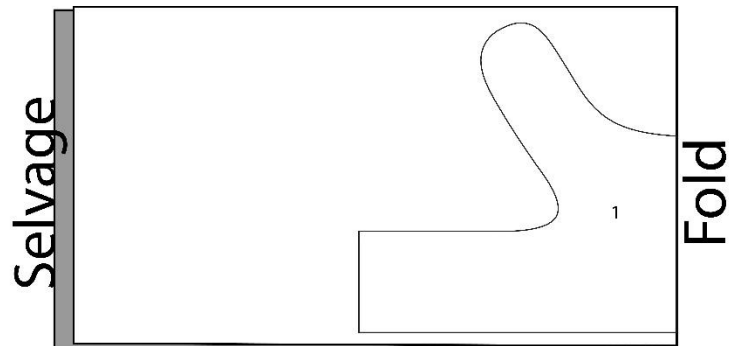
Use pieces 1



Fabric 2

44" Bolt

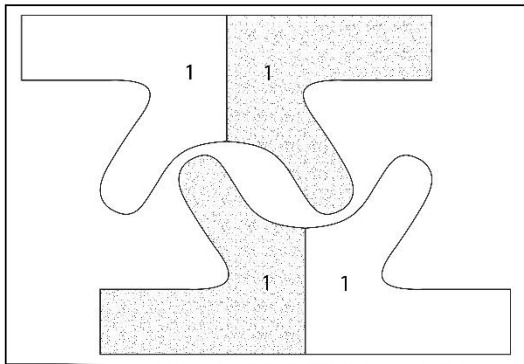
Use pieces 1



Interfacing

20" Bolt

Use pieces 1

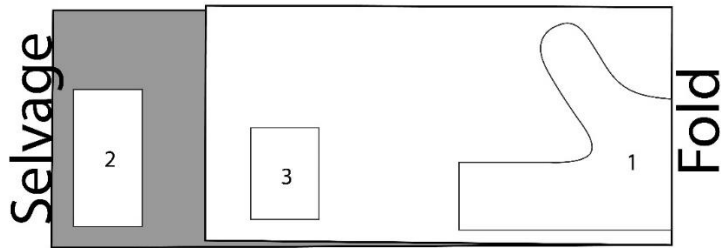


Harness A ** Small & Medium

Fabric 1

44" Bolt

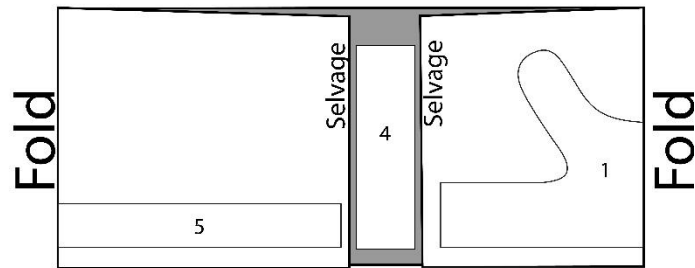
Use pieces 1, 2, 3



Size: Small - Fabric 2

44" Bolt

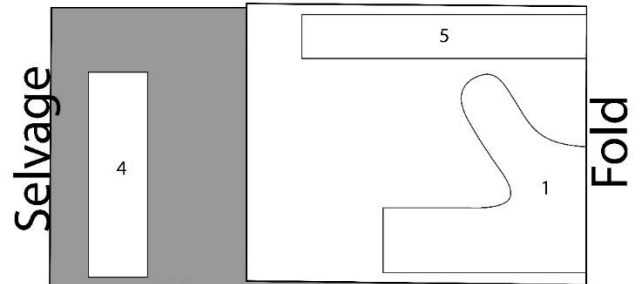
Use pieces 1, 4, 5



Size: Medium - Fabric 2

44" Bolt

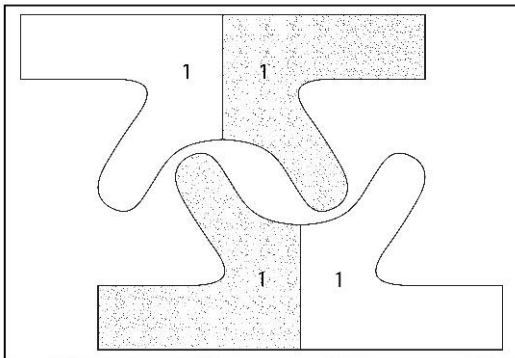
Use pieces 1, 4, 5



Interfacing

20" Bolt

Use pieces 1

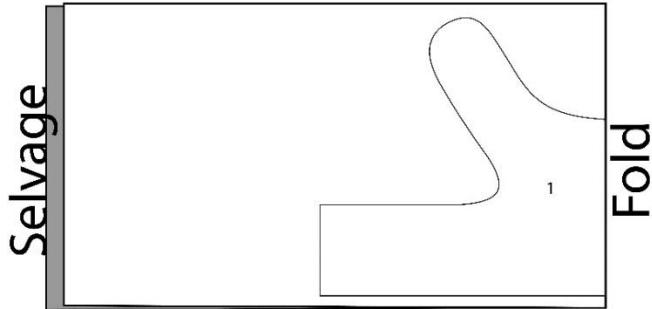


Harness B ** Small & Medium

Fabric 1

44" Bolt

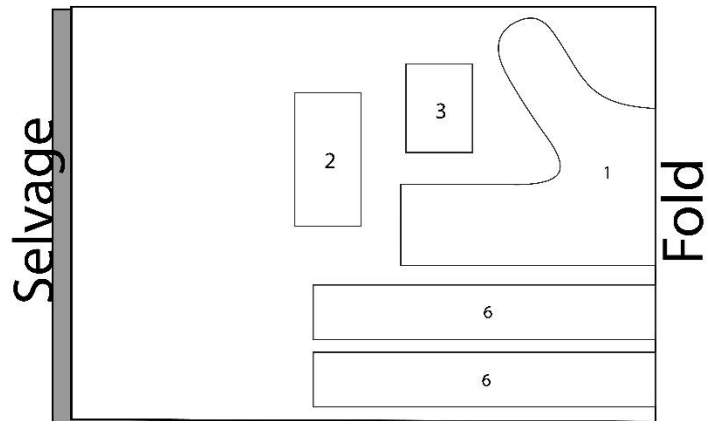
Use pieces 1



Fabric 2

44" Bolt

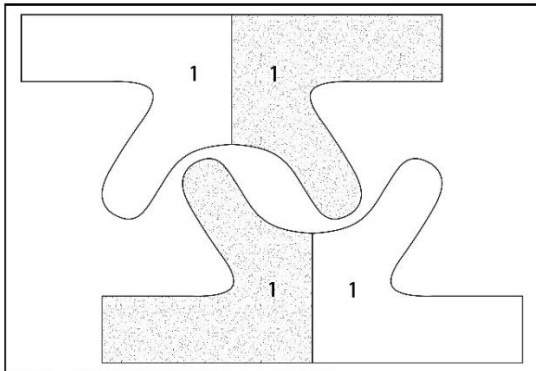
Use pieces 1, 2, 3, 6



Interfacing

20" Bolt

Use pieces 1

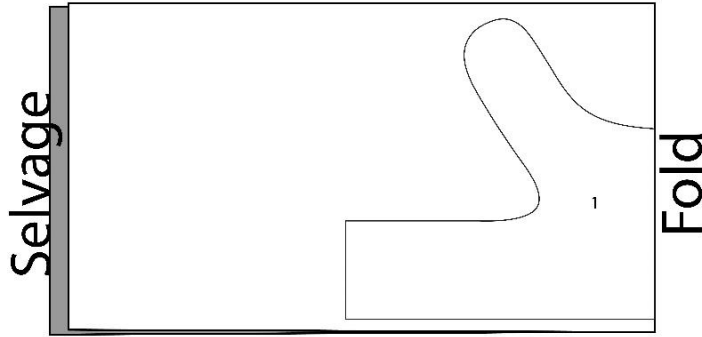


Harness C ** Small & Medium

Fabric 1

44" Bolt

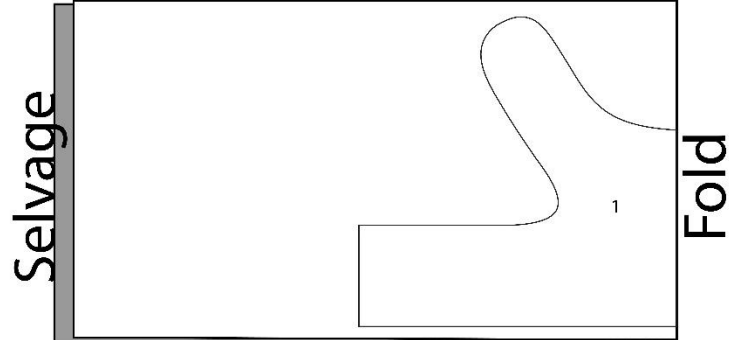
Use pieces 1



Fabric 2

44" Bolt

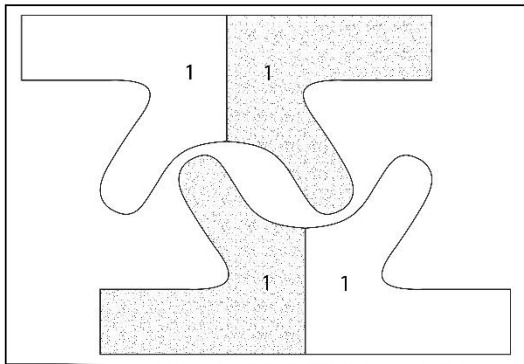
Use pieces 1



Interfacing

20" Bolt

Use pieces 1

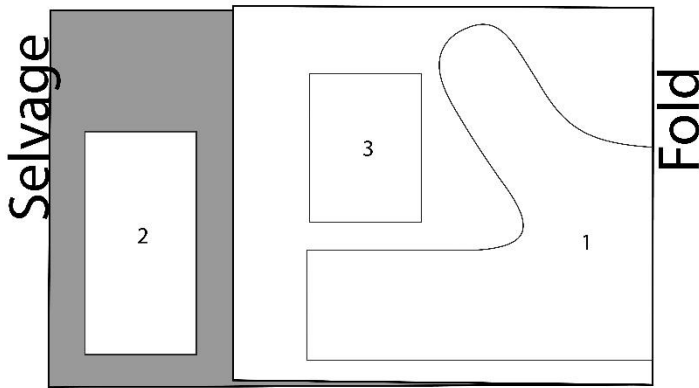


Harness A ** Large & XLarge

Fabric 1

44" Bolt

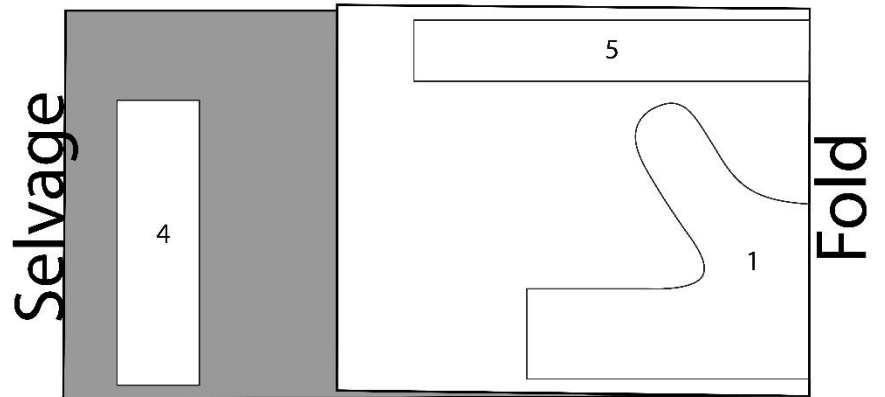
Use pieces 1, 2, 3



Fabric 2

44" Bolt

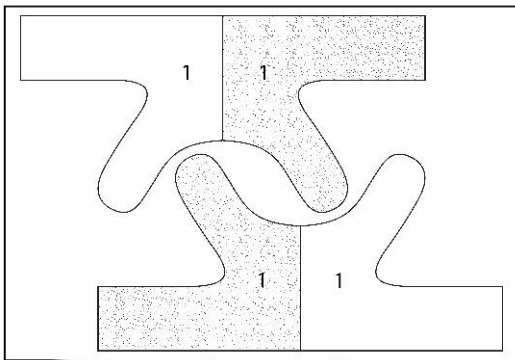
Use pieces 1, 4, 5



Size: Large - Interfacing

20" Bolt

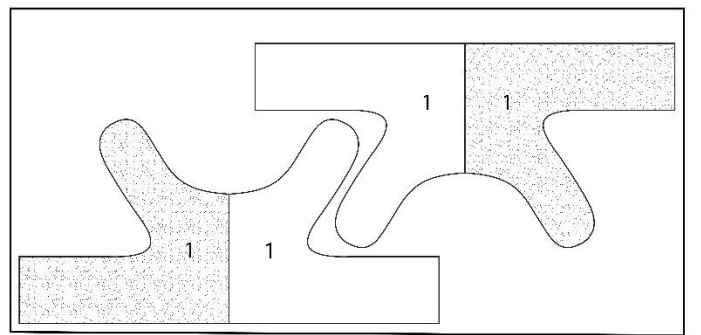
Use pieces 1



Size: XLarge - Interfacing

20" Bolt

Use pieces 1

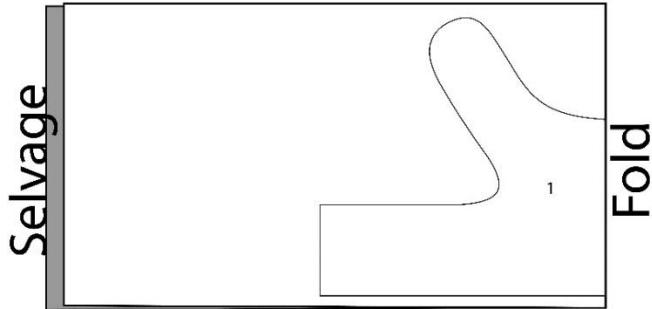


Harness B ** Large & XLarge

Fabric 1

44" Bolt

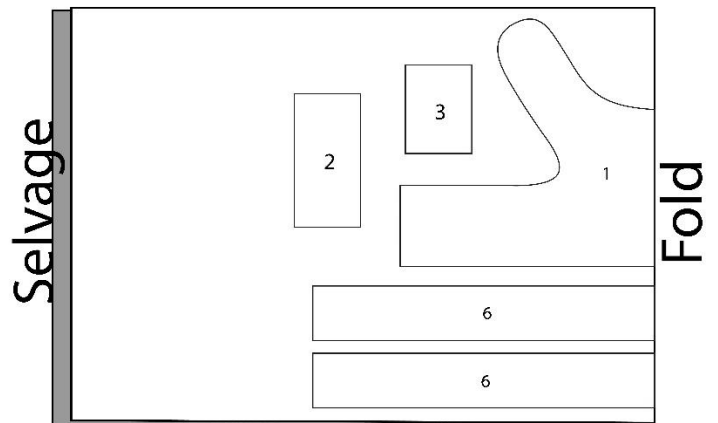
Use pieces 1



Fabric 2

44" Bolt

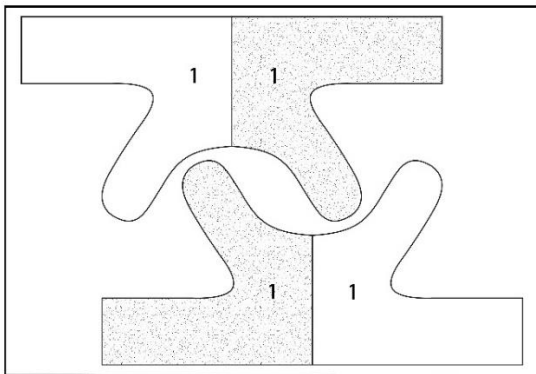
Use pieces 1, 2, 3, 6



Size: Large - Interfacing

20" Bolt

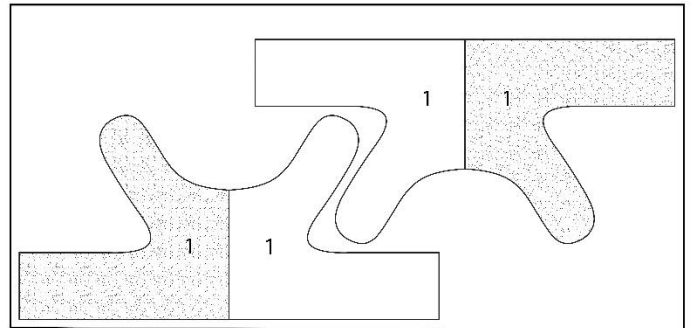
Use pieces 1



Size: XLarge - Interfacing

20" Bolt

Use pieces 1

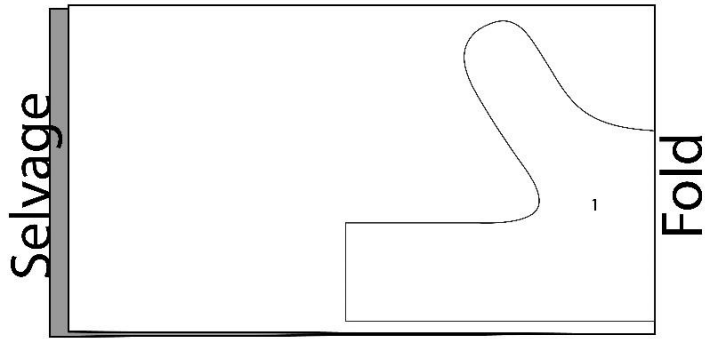


Harness C ** Large & Xlarge

Fabric 1

44" Bolt

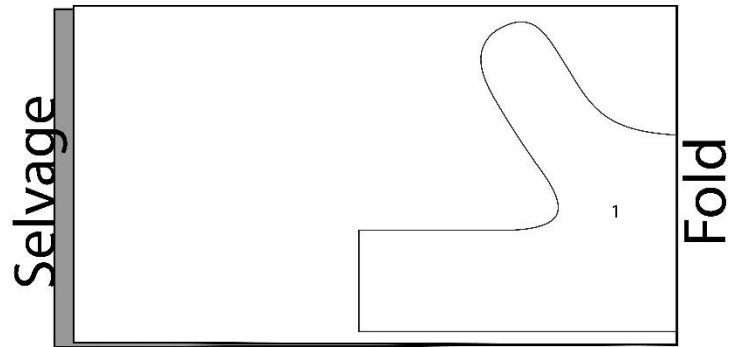
Use pieces 1



Fabric 2

44" Bolt

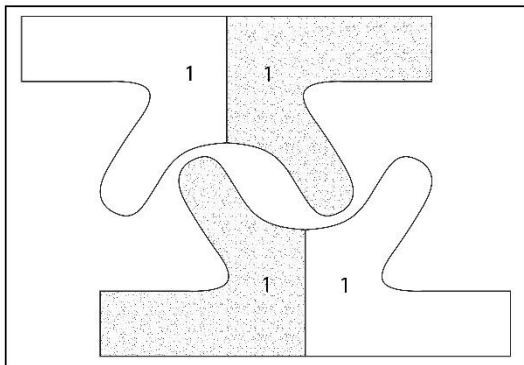
Use pieces 1



Size: Large - Interfacing

20" Bolt

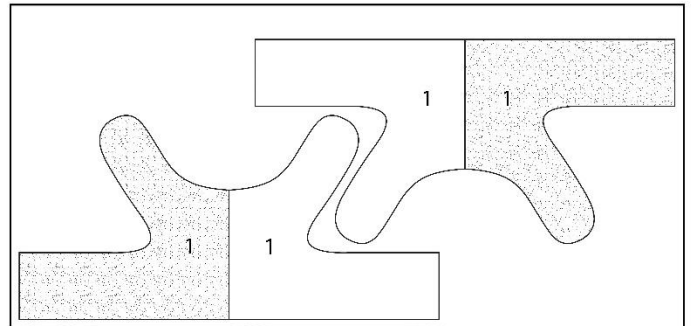
Use pieces 1



Size: XLarge - Interfacing

20" Bolt

Use pieces 1

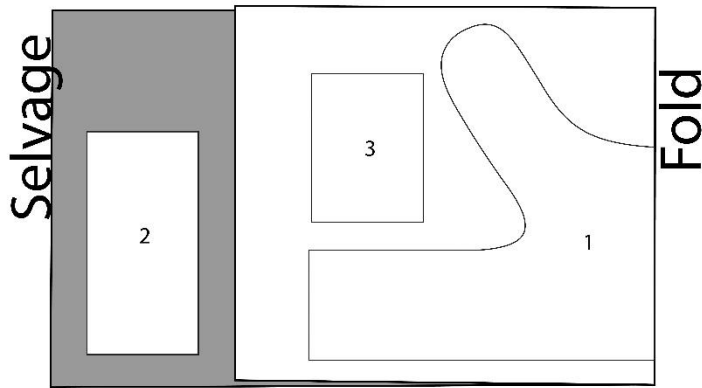


Harness A ** XXLarge

Fabric 1

44" Bolt

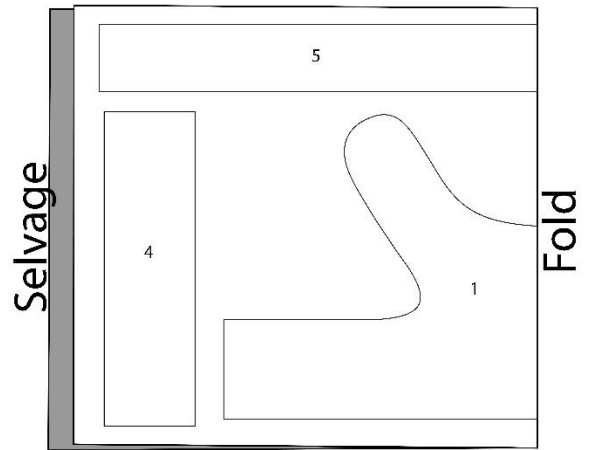
Use pieces 1, 2, 3



Fabric 2

44" Bolt

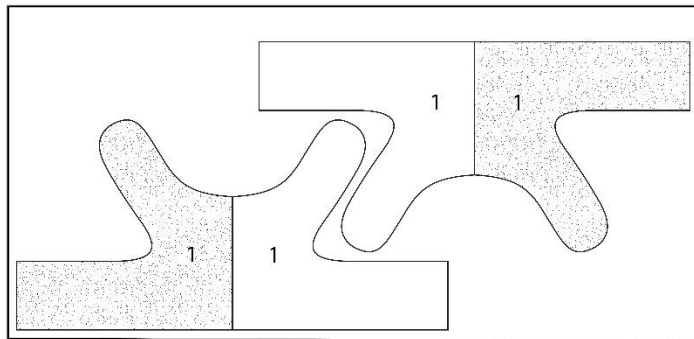
Use pieces 1, 4, 5



Interfacing

20" Bolt

Use pieces 1

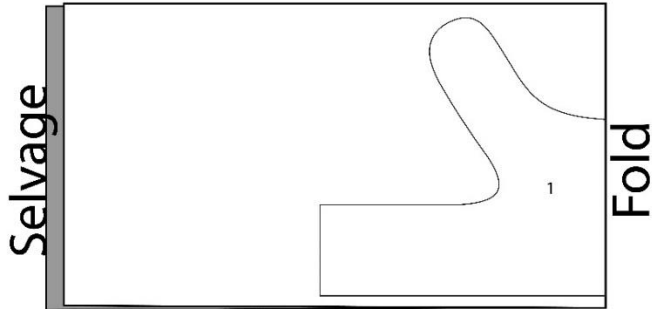


Harness B ** XXLarge

Fabric 1

44" Bolt

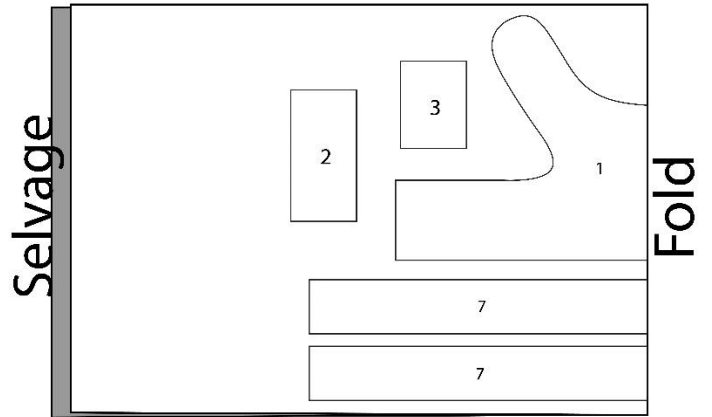
Use pieces 1



Fabric 2

44" Bolt

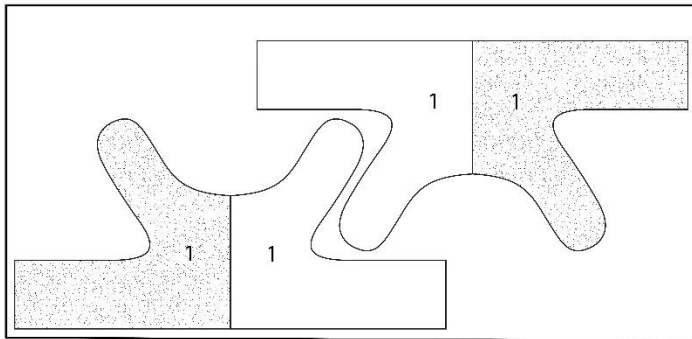
Use pieces 1, 2, 3, 7



Interfacing

20" Bolt

Use pieces 1

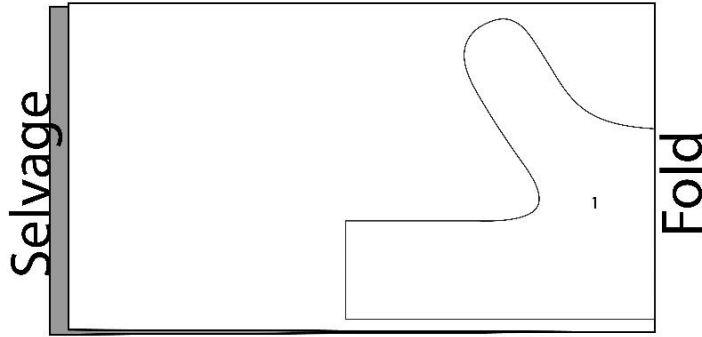


Harness C ** XXlarge

Fabric 1

44" Bolt

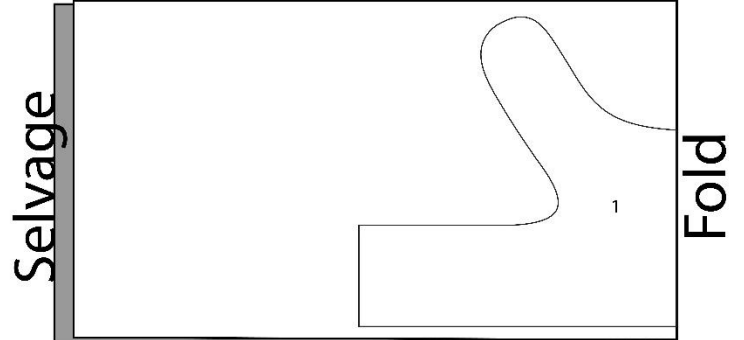
Use pieces 1



Fabric 2

44" Bolt

Use pieces 1



Interfacing

20" Bolt

Use pieces 1

