

2

Small (A & B)

Harness with Buckle

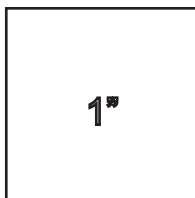
D-Ring Tab

CUT 1

Center Line



Cut a strip of
Fleece Interfacing
3/4" x 6"



Gather

4

Small (A & B)

Harness with Buckle

Front Ruffle

CUT 1



1/4"
Seam
Allowance
unless otherwise
indicated

Gather

3/8" Seam Allowance

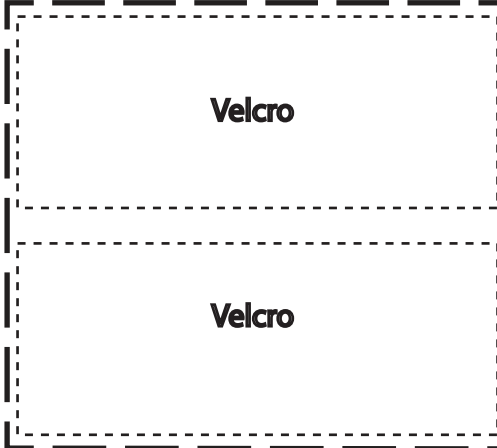
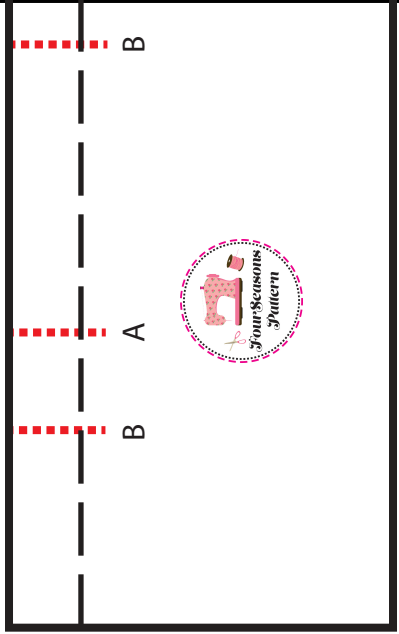
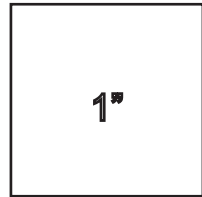
5

Small (A)

Harness with Buckle

Ruffle Skirt

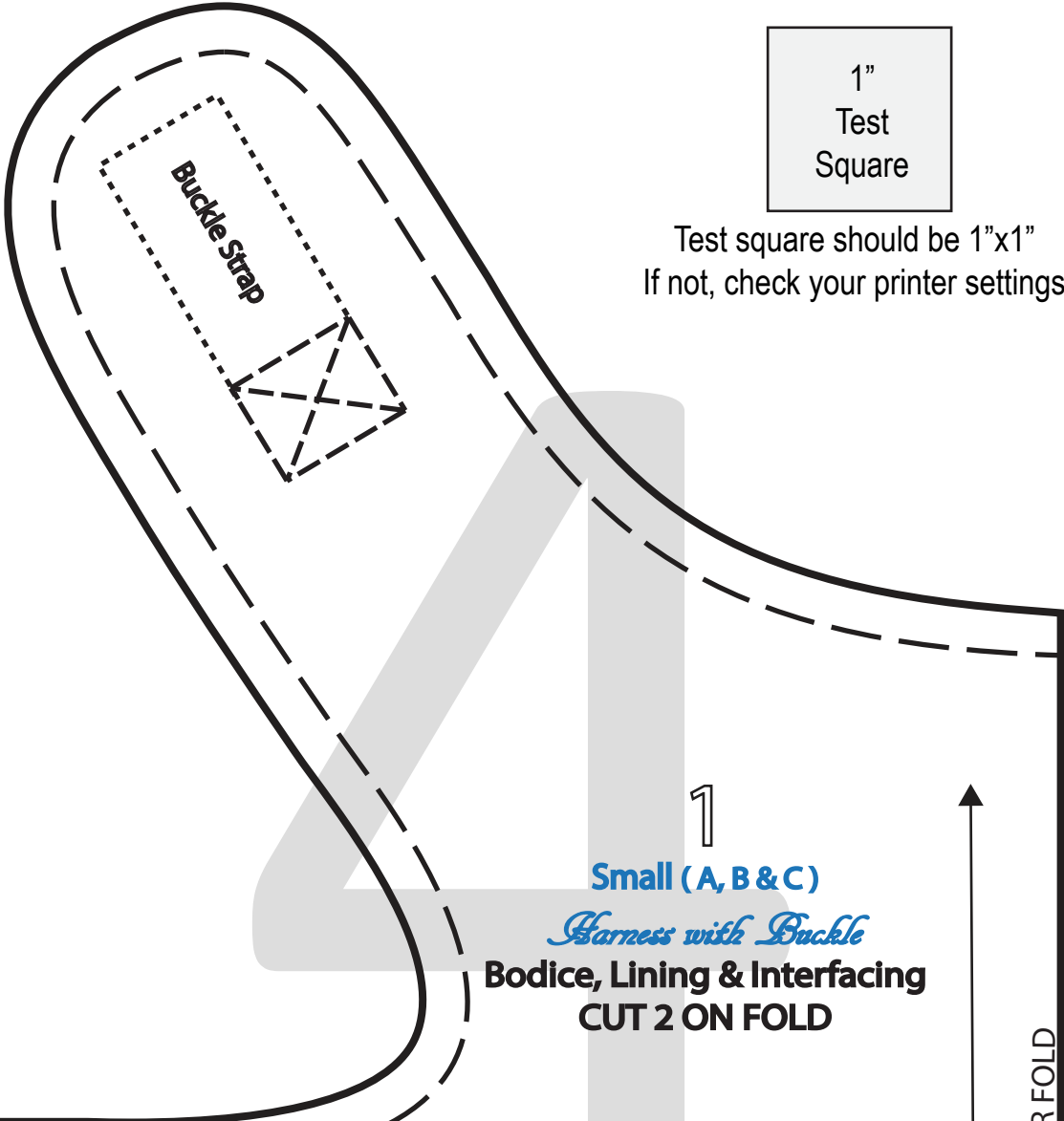
CUT 1





1"
Test
Square

Test square should be 1"x1"
If not, check your printer settings



Buckle Strap

1
Small (A, B & C)

Harness with Buckle
Bodice, Lining & Interfacing
CUT 2 ON FOLD

1/4"
Seam
Allowance
unless otherwise
indicated

CENTER FOLD



*Four Seasons
Pattern*



3

Medium (A & B)

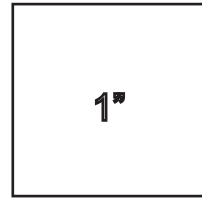
Harness with Buckle

Buckle Strap

CUT 2

Center Line

Cut a strip of
Fleece Interfacing
3/4" x 4.5"



CENTER FOLD

Grainline

CENTER FRONT

A

B

Grainline

A

B

A

B

Gather

A

A

6

Medium (B)

Harness with Buckle

Pleated Skirt

CUT 2

2

Medium (A & B)

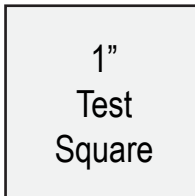
Harness with Buckle

D-Ring Tab

CUT 1

Center Line

Cut a strip of
Fleece Interfacing
3/4" x 6.75"



1"
Test
Square

Test square should be 1"x1"
If not, check your printer settings



Gather

4

Medium (A)

Harness with Buckle

Front Ruffle

CUT 1

1/4"
Seam
Allowance
unless otherwise
indicated

Gather

3/8" Seam Allowance

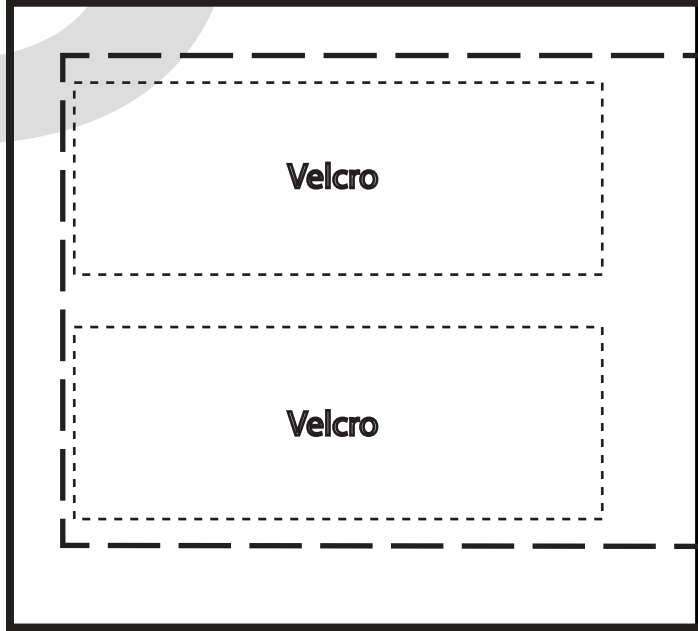
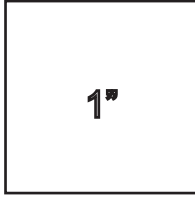
5

Medium (A)

Harness with Buckle

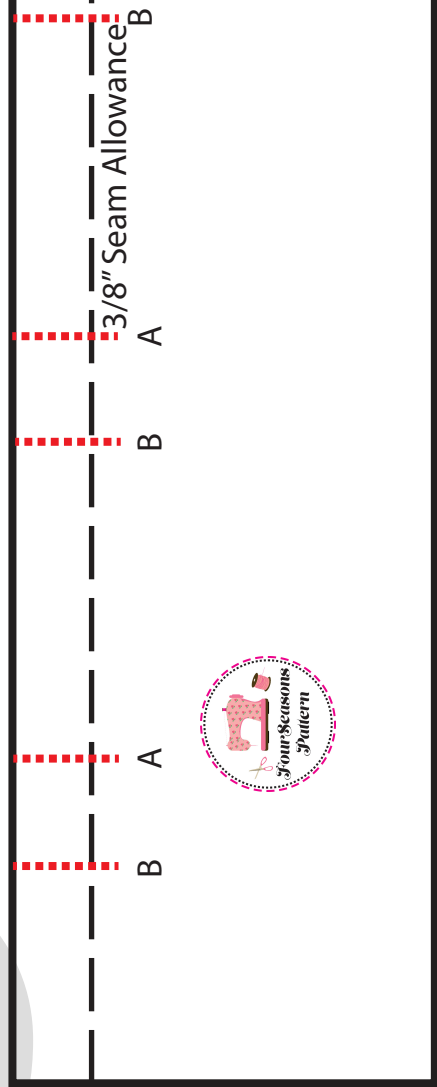
Ruffle Skirt

CUT 1



Velcro

Velcro



3/8" Seam Allowance

B A B A B

Buckle Strap

1"

1

Medium (A, B & C)

Harness with Buckle

Bodice, Lining & Interfacing

CUT 2 ON FOLD

1/4"
Seam
Allowance
unless otherwise
indicated

CENTER FOLD

