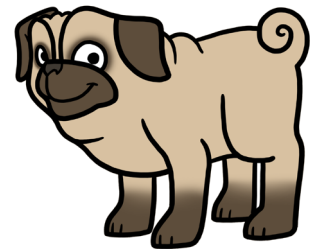




Pugs & Kisses



DIY DOG HARNESS

WHAT WILL YOU NEED?

- ♥ A: Harness template (print on A4 paper)
- ♥ B: x2 Pieces of fabric (x2 Fat squares)
- ♥ C: Polypropylene webbing
- ♥ D: x1 Metal/Plastic D Ring
- ♥ E: x1 Three bar slide buckle
- ♥ F: x1 Curved side release buckle

TOOLS

- ♥ A Printer & A4 Paper/Card
- ♥ A Tape Measure, Scissors, Tape
- ♥ A Sewing Machine & Thread
- ♥ Fabric Pen/Sharpie/Tailors Chalk

★ **PRO TIPS:** These are optional extra steps for a more professional finish!



STEP 1

Firstly, you'll need to measure around your dog's neck and chest to make sure you choose the correct template/size. Sizes X Small to X Large are included in this download.

Print your chosen template on A4 paper or card. Print actual size or the pattern may print larger or smaller than it should.

Cut this out and stick (if your chosen template is in two parts) all the pieces together with a bit of tape.



STEP 2

Take one piece of your chosen fabric and place this pattern side down. Place the paper template onto the fabric & trace all the way around it with a pen or chalk.

Once you've finished, flip the template over (see photo) and trace it again, so that you complete the shape of the harness.

Once you've drawn your pattern onto the fabric you can then loosely cut this out (leave a 1cm/0.5" seam), ready for step 3!

★ **PRO TIP:** Polar Fleece or 'Spacer Mesh' fabric is perfect for the inside of the harness.



STEP 3



Place your first piece of fabric (pattern side down) onto your second piece of fabric & start to pin the two pieces together along the edge.



Once you've finished pinning, you can cut away some of the excess fabric, which will make things easier when it comes to sewing the two pieces together.

STEP 4

TIME TO START SEWING!

Now it's time to use your sewing machine to sew the two pieces of fabric together. Start at one of the top flat edges, making sure **NOT** to close this end (see photo) as you will need to push the fabric through this opening to turn it right-side-out once you've finished sewing.



Once complete cut away all the excess fabric leaving a 0.5cm/0.2" seam all the way around.



STEP 5



TURNING OUT YOUR HARNESS

At the moment your harness is inside-out, so you'll need to push the fabric through the open edge so it is right-side-out. This can be quite fiddly (especially with the smaller patterns).

★ **PRO TIP:** Use a knitting needle or chop stick to help turn out the harness.



STEP 6



Once the harness has been pushed through, you can then sew along the edges of the harness again (about 0.5cm/0.2" from the outer edge) for a professional finish.

If you've followed the instructions your harness should look very similar to this (see pic 3). You can now close/sew the open edge (where you turned out your fabric), just sew straight across - this will eventually be hidden by the neck strap.

ALMOST THERE!

Now you just need to attach all the Polypropylene webbing & hardware - the D ring, slide Buckle & curved side release buckle.



CLOSE-UP OF NEATENED EDGE



CLOSE THE OPEN EDGE

STEP 7



SIDE RELEASE BUCKLE

Take the female end of your curved side release buckle & a piece of your Polypropylene webbing (length listed under strap measurements as "Female Buckle:" on the templates). Thread the webbing through the buckle as shown above.

★ **PRO TIP:** As the webbing is plastic you can melt any fraying edges with a flame however please be very careful!

Place the base of the folded webbing onto the front/patterned side of the bottom left of the harness (see above), ready to sew in place.



Sew the above shape (a rectangle with an 'X' through the centre).

Once finished the buckle should be firmly fixed in place, as above.

★ **PRO TIP:** Go over your stitches 2 or 3 times to give the strap added strength - especially if your dog pulls on the lead.

MEASURE YOUR DOG

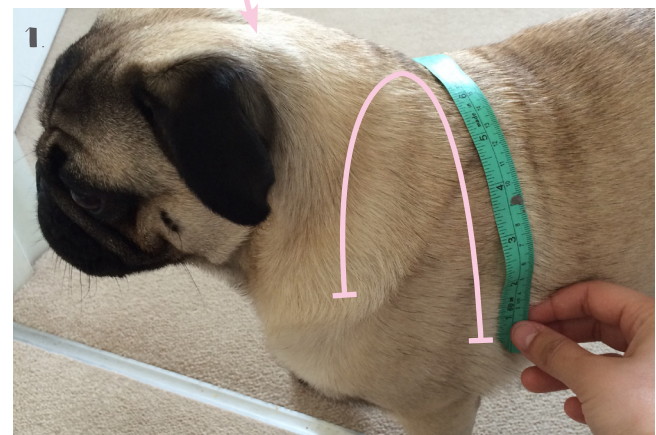
* or use the standard back strap measurements provided on the template/s.

STEP 8

MAKING THE BACK STRAP

To get the correct back strap measurement you'll need to measure your dog's back from elbow to elbow (see right). The strap should measure 1 & 1/2 times this measurement, so you can adjust it if they grow or loose/gain weight etc.

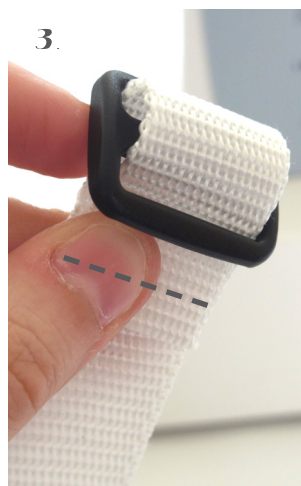
For example my dog measures 35.5cm (14") so I make the back strap 53.25cm (21").



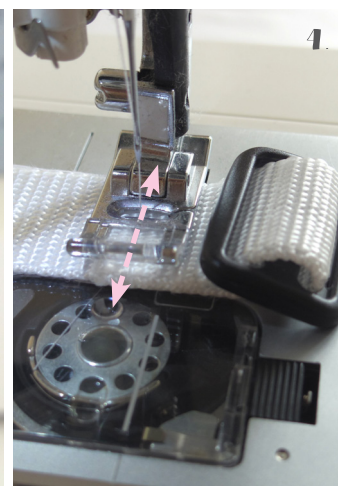


2.

You'll first need to attach your '3 bar slider', by taking one end of the webbing & threading it through the slider. Remember to melt the ends of the webbing to stop it fraying (optional).



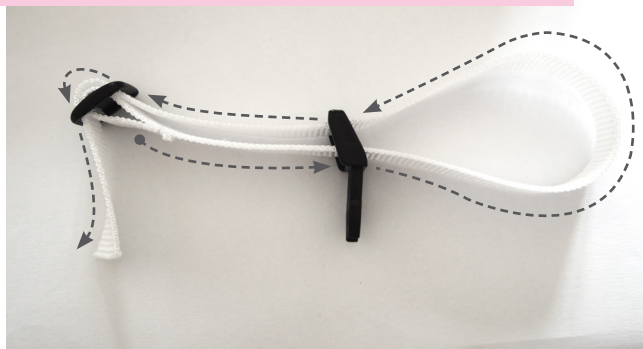
3.



4.

Use your sewing machine to close this end of the webbing, so that your slider can't move. Sew (as shown in pic 3 & 4) 2 or 3 times to make it extra secure.

5. **THREAD THE STRAP THROUGH THE SIDE-RELEASE BUCKLE & BACK THROUGH 3 BAR SLIDER**



5.

Now thread the free end of the webbing through the male section of your side-release buckle (bottom slot first) and back through the '3 bar slider' (as shown in pic 5 above).



6.

Finally sew the loose end of the webbing to the front/patterned side of the bottom right of the harness (see above). Just like you did in STEP 7.

STEP 9

NECK STRAP AND D RING

Now this is the fiddliest part - sewing on the neck strap that will hold your back strap & D ring in place.

First sew the two open ends of the harness together (neatest side on top) to create a neck hole.

Next you will need a piece of webbing (length listed under strap measurements on each template sheet as "Neck:").

NECK HOLE



SEW THE TWO OPEN ENDS OF THE HARNESS TOGETHER



Fold the neck strap webbing in half over the top of the harness & through the neck hole, as show above. The loose ends should point towards the back of the harness.



Holding the harness & webbing tightly, sew the neck strap to the harness as shown above. Do this a couple of times (as shown in Step 7 & 8) to secure the neck strap in place.



Now it's time to attach the D ring. Slide this on through the top strap of webbing. Push it right up to the harness as shown above.

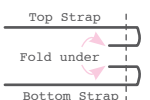


Fix the D ring in place by sewing the top strap & bottom strap together behind the D ring (as shown above). Sew over this line 2 or 3 times.



Finally sew the loose ends of the webbing together (as above).

★ **PRO TIP:** First fold under the ends of the webbing on the top and bottom straps before sewing them together, for a more professional finish.



YOU DID IT!

STEP 10

WOOHOO!

All that's left to do is to thread the back strap through the opening on the neck strap (as shown below) and you're finished - Yay!



THREAD BACK STRAP THROUGH NECK STRAP



ADJUST TO FIT USING 3 BAR SLIDER BUCKLE



ATTACH LEAD/LEASH TO THE D-RING

SECURE TO DOG USING SIDE RELEASE BUCKLE



DOUGLAS IN HIS SIZE LARGE HARNESS



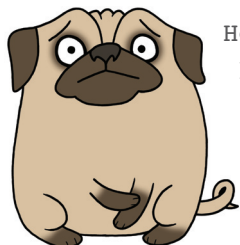
TIME FOR A LOVELY SNOOZE...

Ernie & Pumbaa in their (very first) X small harnesses.

Pugs & Kisses

THANK YOU!

Thank you so much for purchasing my harness pattern. Hopefully you have now made an awesome harness for your dog/s and you've got the bug to make many many more!



However if you find that you are stuck with anything or need any help or advice with the patterns or instructions please don't hesitate to get in touch. You can contact me (Jenni) anytime either via a quick Etsy message or through the Pugs & Kisses Facebook group (where you can share your creations too!)
<https://www.facebook.com/groups/pugsandkissesuk>

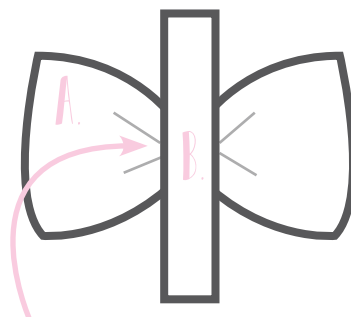


I am very friendly and happy to help in any way I can, so please get in touch!

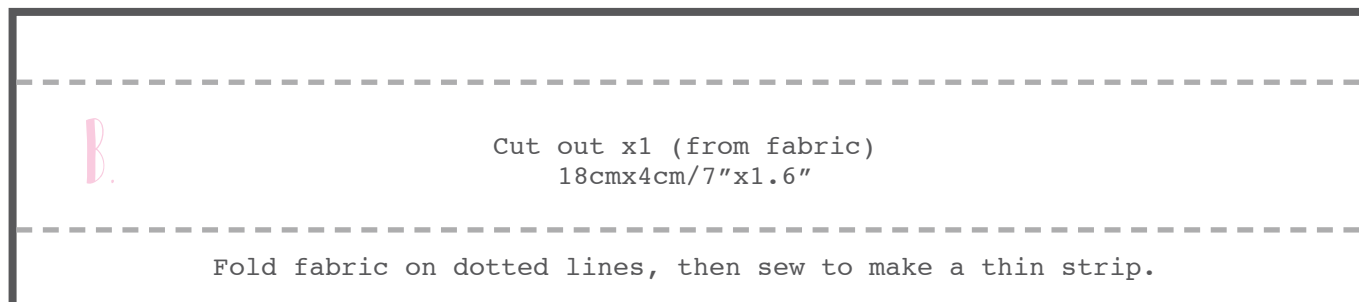
EXTRAS



1: Sew two rectangle pieces of fabric together (leave an opening), then turn right-side-out. Neatly close the opening.



2: Pinch the top and bottom of the rectangle together, then tightly wrap the thin strip (B) around the middle to create a bow.



3: Finally sew the end of the strip to the back of the bow, before carefully stitching this onto the front of your harness, or just above the D ring for the ladies.