

1745

Size Large / XLarge

Includes pattern & instructions



FUNtastic Patterns for Little Dogs!



Pajama Onesies



Pajama Onesies



© 2014 Sofi & Friends * Sold for personal use only and not for commercial or manufacturing purposes

**To print patterns properly select the following options in Adobe Reader print section:
Size Options - "Actual Size"
Orientation - "Auto portrait/landscape"**

Pattern 1745
Size Large / XLarge



Pajama
Onesies



Pajama
Onesies

SUGGESTED FABRICS: fleece & stretch knits

NOTIONS: thread; 1 yard 5/8" FOE (fold over elastic)

BODY MEASUREMENTS - See measurement image on next page

	XXS	XS	SM	MED	LG	XLG	XXLG
Neck	5 1/2 - 7"	6 1/2 - 8"	7 - 8 1/2"	7 3/4 - 9 1/4"	9 - 10 1/2"	10 - 11 1/2"	12 - 13 1/2"
Girth	9 1/4 - 10 3/4"	10 1/2 - 12"	12 - 13 1/2"	13 1/4 - 14 3/4"	15 - 16 3/4"	16 1/2 - 18 1/2"	19 - 21
Length	7 3/8"+	8 1/8"+	8 7/8"+	10"+	10 5/8"+	12"+	13 3/4"+

Measuring your Dog - use a soft tape measure keeping it a bit loose; you should be able to slide a finger between the dog and tape

NECK: Measure around widest part of neck where collar sits

GIRTH: Measure behind front legs where chest starts

LENGTH: Measure from base of neck (between shoulder blades) to where tail starts

PAJAMA ONESIES

Fabric A 54" (yd)	1/2	5/8	5/8	2/3	3/4	7/8	7/8
Fabric B 54" (yd)	1/4	1/4	1/3	1/3	1/3	3/8	3/8

Finished Back

Length from base of neck to base of tail	8 1/4"	9"	10"	11"	12"	13 1/2"	14 3/4"
---	--------	----	-----	-----	-----	---------	---------

Finished Sleeve

Length from base of neck to bottom of Sleeve	6 3/8"	7"	8 1/2"	8 3/4"	9 3/4"	10 3/4"	12"
---	--------	----	--------	--------	--------	---------	-----

Use 1/4" (XXSm to Lg) or 3/8" (XLg to XXLg) seam allowance on all seams unless otherwise noted. Press all seam allowances as noted in instructions.

Optional buttonhole for harness

You may add a buttonhole to back of clothing (instead of D-Ring) for using your own harness underneath clothing.

Pattern Markings

←→ Grainline - Place on straight grain of fabric, parallel to selvage or fold.

FOLD Place line on fold of fabric.

GLOSSARY

EASESTITCH-Stitch along seamline, using long machine stitches. Pull thread ends to adjust the fit.

GATHER-Stitch along seamline using long machine stitches. Pull thread ends to adjust the fit.

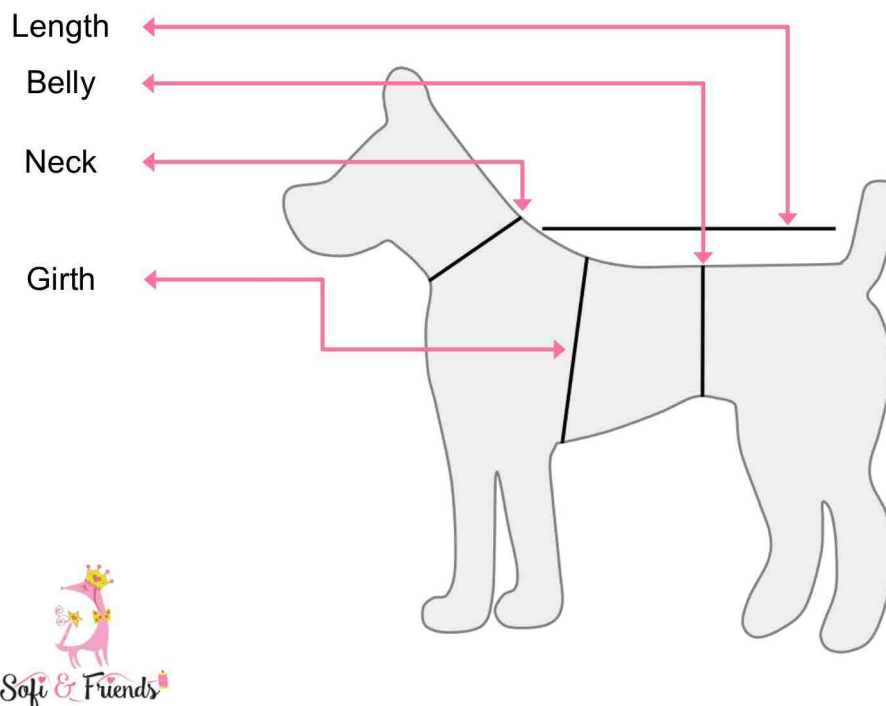
REINFORCE-Stitch again along seamline using small machine stitches.

TOPSTITCH-On outside, stitch 1/8" to 3/16" from seam depending on size of pattern.

CLIP CURVES-Notch inside curves and clip outside curves.

TRIM CORNERS-Trim excess fabric from outside corners.

FINISH EDGE-Use a zigzag stitch, or stitch of your choice, to finish raw edge of fabric.



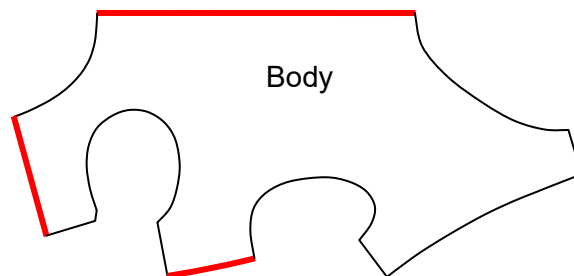
The following instructions demonstrate how to alter this pattern to fit your dog perfectly. Begin with the Body Measurements noted on the 1st page of the pattern. When selecting a size choose one that will give your dog the best overall fit. Girth is most important, then Neck and then Length.

Altering Neck & Girth

Patterns are made to fit comfortably the largest number on the size range. For example, the neck range on a size Large pattern is 9" to 10 1/2". The pattern is designed to fit perfectly on a dog with a 10 1/2" neck. If your dog's neck size is 9 1/2", subtract 9 1/2" from 10 1/2" equaling 1. The overall neck measurement needs to be 1" less, so trim 1/2" from pattern as follows.

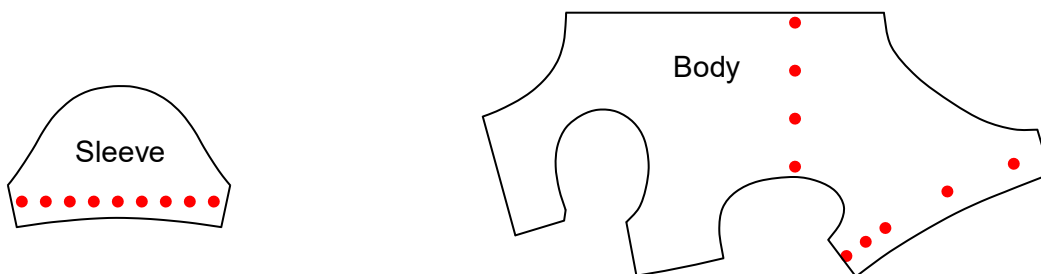
Alter the Body pattern piece along FOLD line and/or chest seams to increase and decrease Neck & Girth. Collar & cuffs may need altering as well. Be careful not to alter pattern too much.

Add to or trim from RED lines altering chest lines by equal amounts



Altering Length

To shorten/lengthen Onesies add to or trim from RED lines.



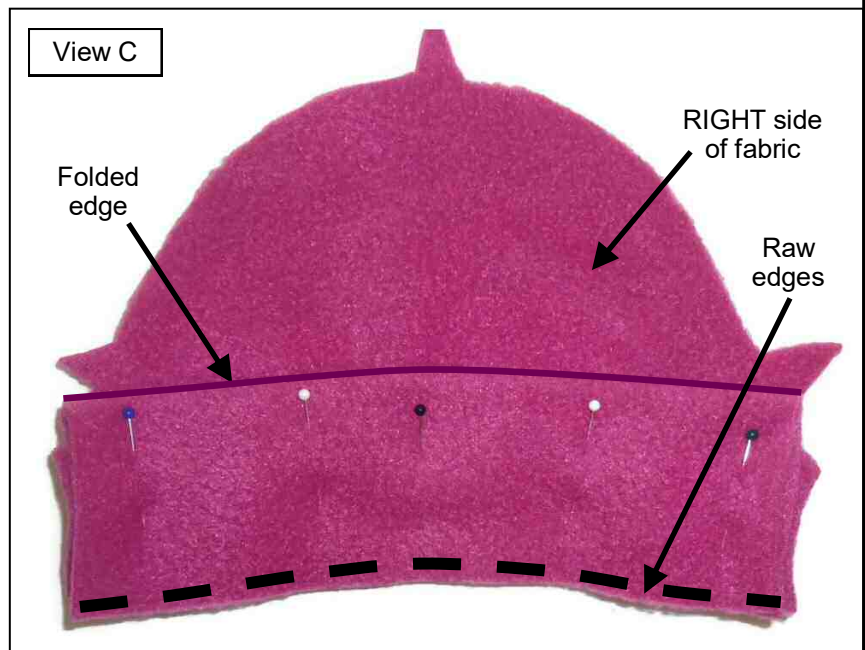
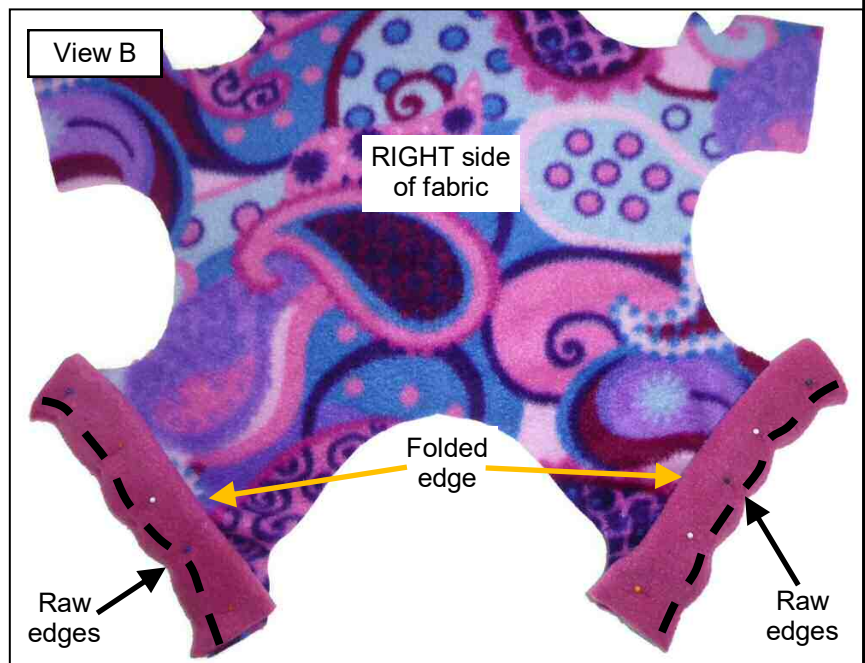
SEWING INSTRUCTIONS

- 1) WRONG sides together fold all four Cuffs along pattern fold line. (View A)

Note: use a 3-point zigzag stitch for sewing pajamas together. If your machine does not have a 3-point zigzag stitch use a large zigzag stitch.

- 2) Slightly stretch and pin Cuffs to RIGHT side of each pajama leg. Raw edges of Cuffs should match raw edges of pajama leg. (View B)
- 3) Sew Cuffs to pajama legs. Press seam. (View B)

- 4) Slightly stretch and pin Cuffs to RIGHT side of each Sleeve. Match raw Cuff edges with raw Sleeve edges. (View C)
- 5) Sew Cuffs to Sleeves. Press seam. (View C)

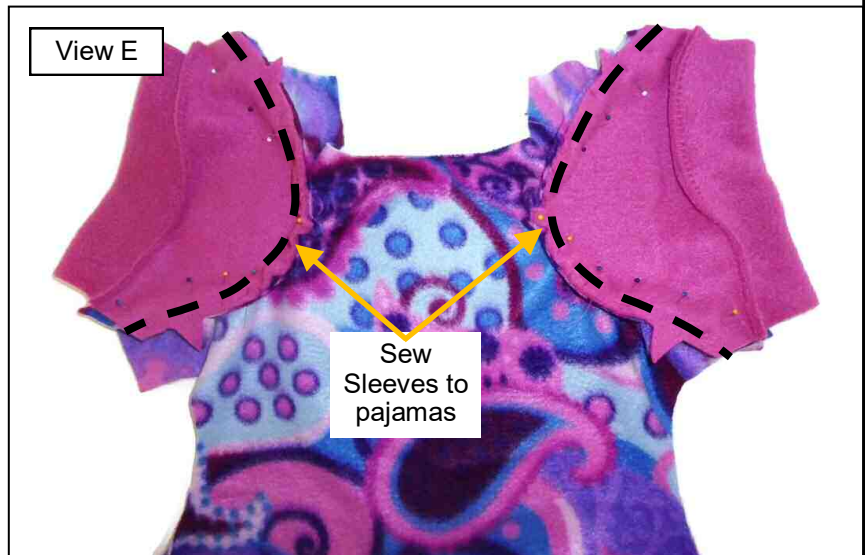


6) Slightly gather top edge of Sleeves between dots. (View D)



7) RIGHT sides together sew Sleeves to pajama Body matching symbols. Adjust gathered Sleeve to fit armhole. (View E)

8) Press seams.



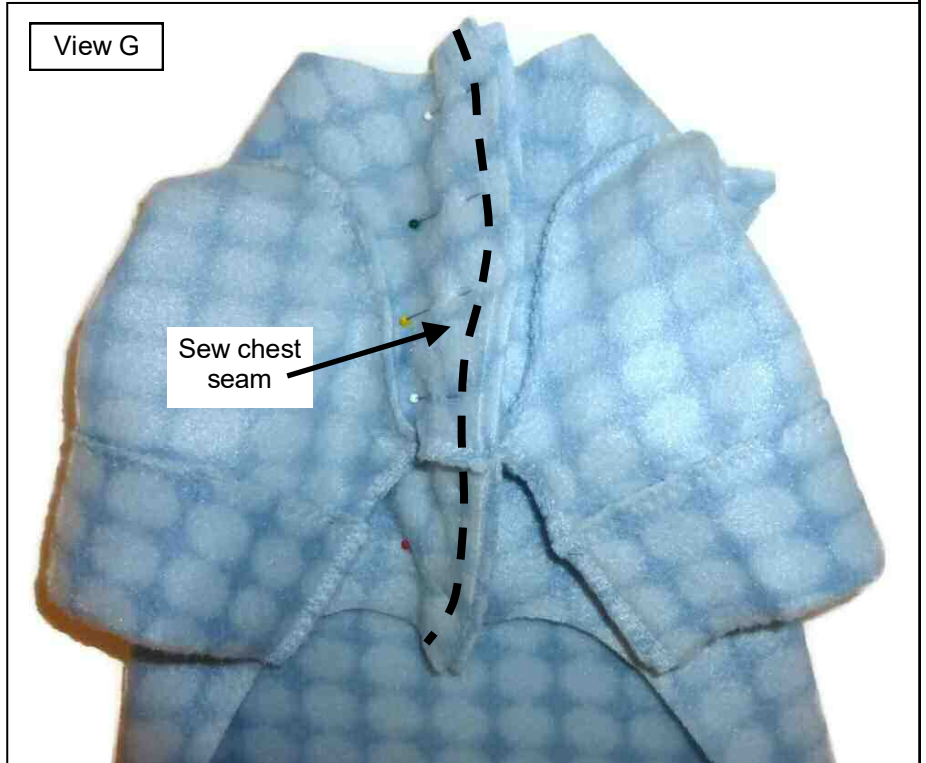
9) RIGHT sides together sew leg and underarm seams. (View F)

10) Press seams.



11)RIGHT sides together sew chest seam. (View G)

12)Press seam.



13)RIGHT sides together sew shorter edges of Collar. (View H)

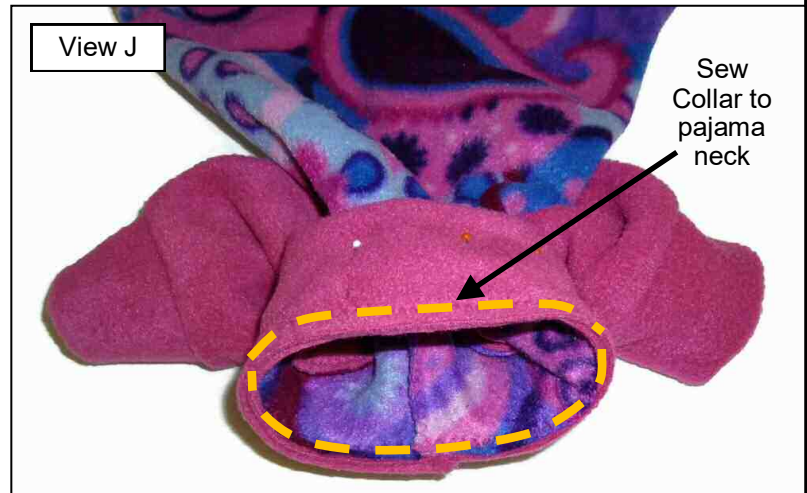
14)Press seam.



15)WRONG sides together fold Collar following pattern fold line. (View I)



- 16) Pull neck of pajamas through Collar matching raw edges & seam. (View J)
- 17) Sew RIGHT side of pajama neck to Collar stretching slightly to fit. (View J)
- 18) Open Collar and press seam.
- 19) Starting at chest seam fold & pin FOE (fold over elastic) to raw edge of belly opening. Pins are used only to begin sewing FOE to the pajamas. (View K)
- 20) Fold & stretch FOE $1\frac{1}{2}$ to 2 times it's length while stitching around entire belly opening. Do not stretch pajamas.
Note: legs are turned wrong side out for this step.



TIP: Fold, stretch & sew FOE in short sections especially around the leg openings.

NOTE: If unfamiliar with FOE the internet is a great source of "How To" information for sewing with FOE.

Sew FOE to raw edges of belly opening folding & stretching FOE $1\frac{1}{2}$ to 2 times it's length

21) Overlap FOE approximately 1/2" at the end. Trim FOE. (View L)



22) Run a zigzag stitch over end of FOE. (View M)



23)View of finished pajama belly opening. (View N)

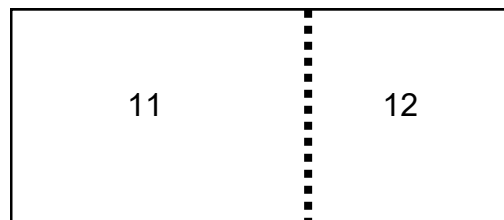
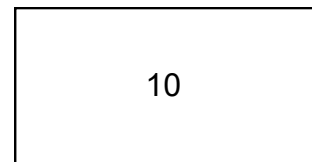
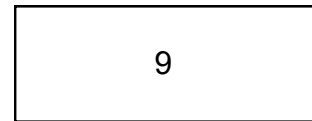
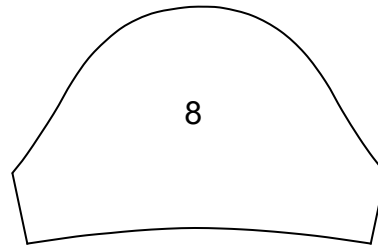
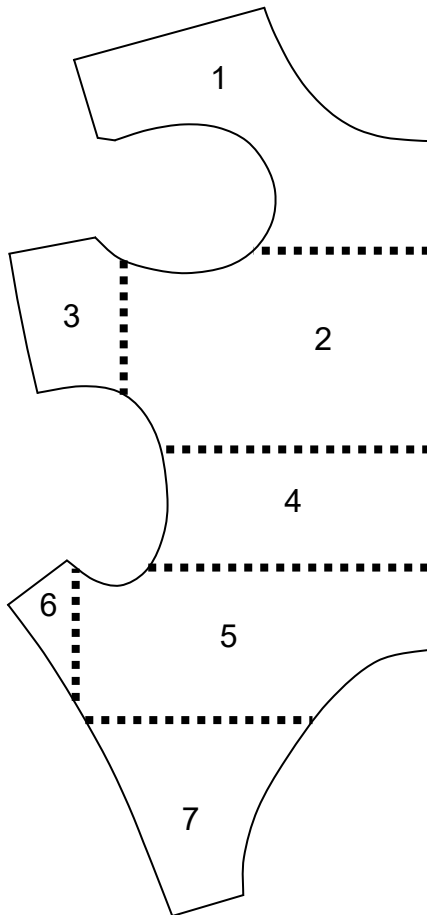
View N



PATTERN PIECES

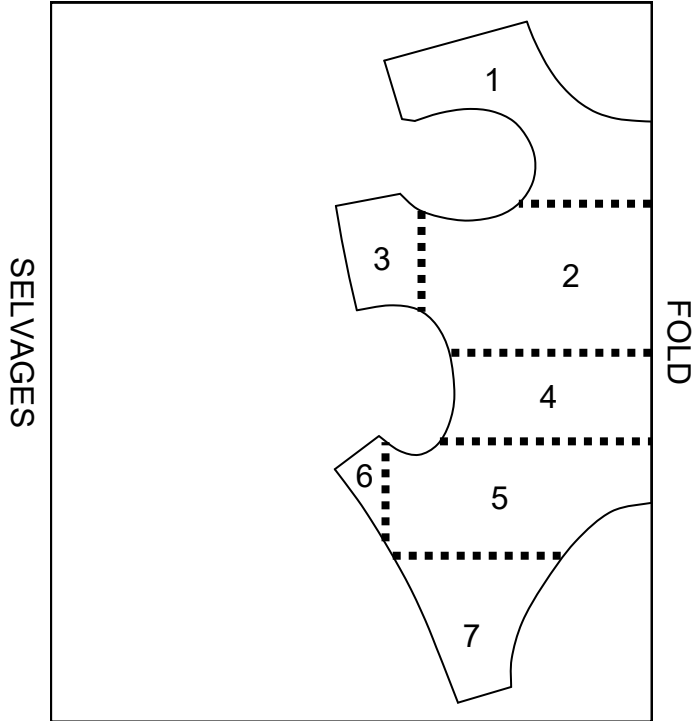
- 1) PAJAMA BODY Section 1
- 2) PAJAMA BODY Section 2
- 3) PAJAMA BODY Section 3
- 4) PAJAMA BODY Section 4
- 5) PAJAMA BODY Section 5
- 6) PAJAMA BODY Section 6
- 7) PAJAMA BODY Section 7
- 8) PAJAMA SLEEVE
- 9) PAJAMA SLEEVE CUFF
- 10) PAJAMA LEG CUFF
- 11) PAJAMA COLLAR Section 1
- 12) PAJAMA COLLAR Section 2

Tape pattern pieces together prior to cutting fabric.

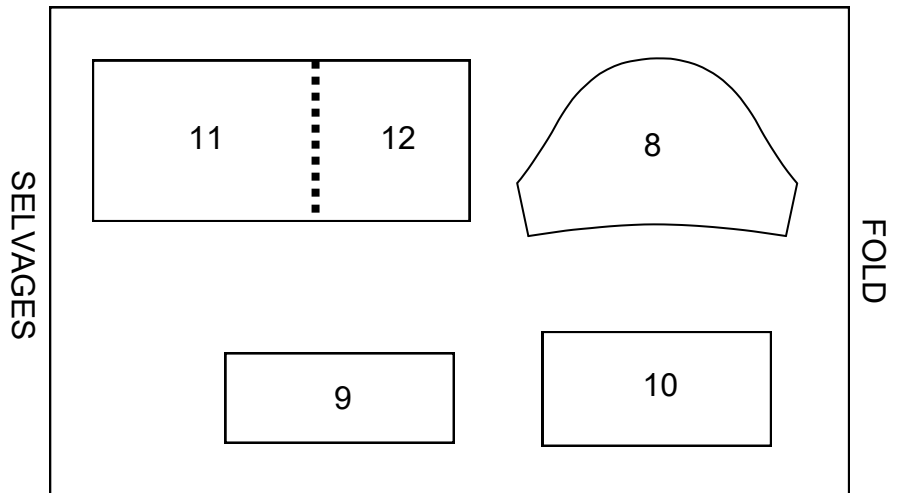


ONESIE

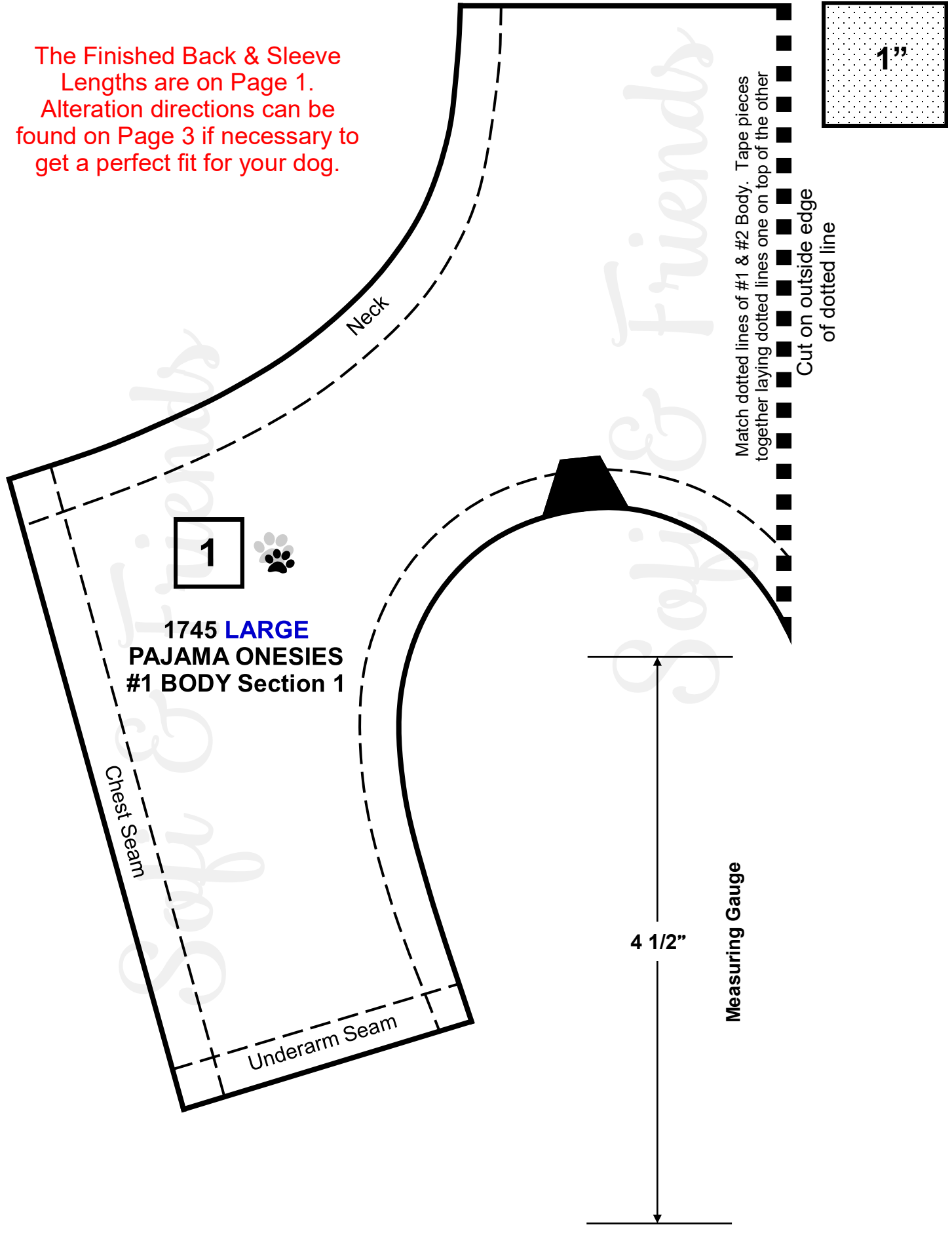
PAJAMA ONESIE Fabric A
USE PIECES 1/2/3/4/5/6/7
54" fabric



PAJAMA ONESIE Fabric B
USE PIECES 8 9 10 11/12
54" fabric **Cut one of 11/12**



The Finished Back & Sleeve Lengths are on Page 1.
Alteration directions can be found on Page 3 if necessary to get a perfect fit for your dog.



1

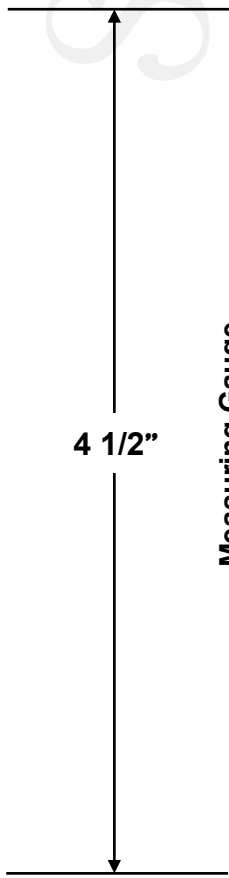


1745 **LARGE**
PAJAMA ONESIES
#1 BODY Section 1

Chest Seam

Underarm Seam

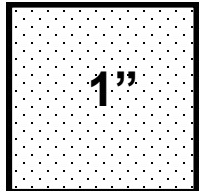
Neck



4 1/2"

Measuring Gauge

Match dotted lines of #1 & #2 Body. Tape pieces together laying dotted lines one on top of the other
Cut on outside edge of dotted line



1"



Sofi & Friends

Sofi & Friends

FOLD

FABRIC A



**1745 LARGE
PAJAMA ONESIES
#2 BODY Section 2
Cut 1 on Fold**

1/4" Seams

SOFI & FRIENDS

Cut on outside edge
of dotted line

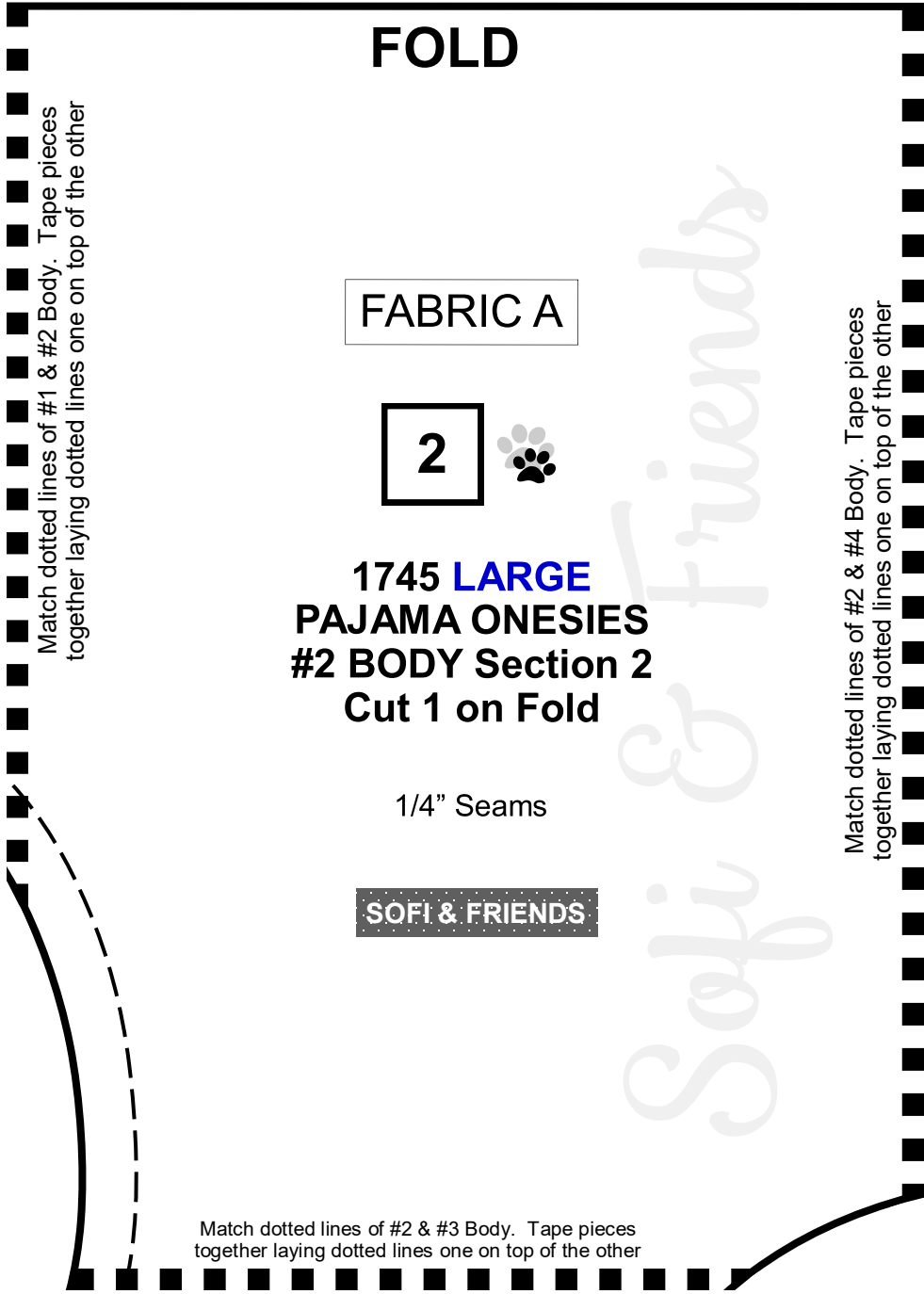
Match dotted lines of #1 & #2 Body. Tape pieces
together laying dotted lines one on top of the other

Match dotted lines of #2 & #4 Body. Tape pieces
together laying dotted lines one on top of the other

Cut on outside edge
of dotted line

Match dotted lines of #2 & #3 Body. Tape pieces
together laying dotted lines one on top of the other

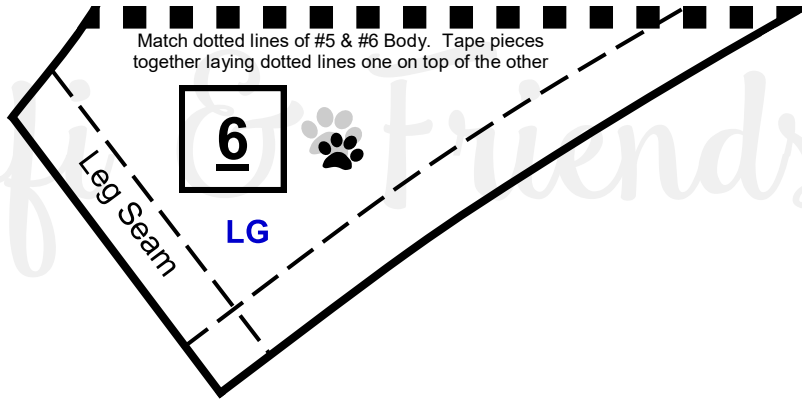
Cut on outside edge
of dotted line





Cut on outside edge
of dotted line

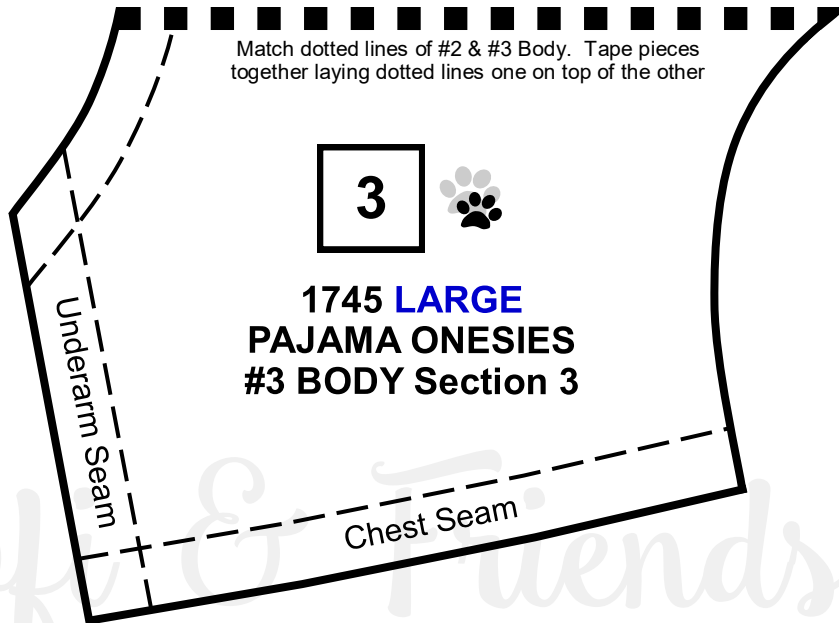
Match dotted lines of #5 & #6 Body. Tape pieces
together laying dotted lines one on top of the other



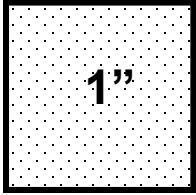
Sofi & Friends

Cut on outside edge
of dotted line

Match dotted lines of #2 & #3 Body. Tape pieces
together laying dotted lines one on top of the other

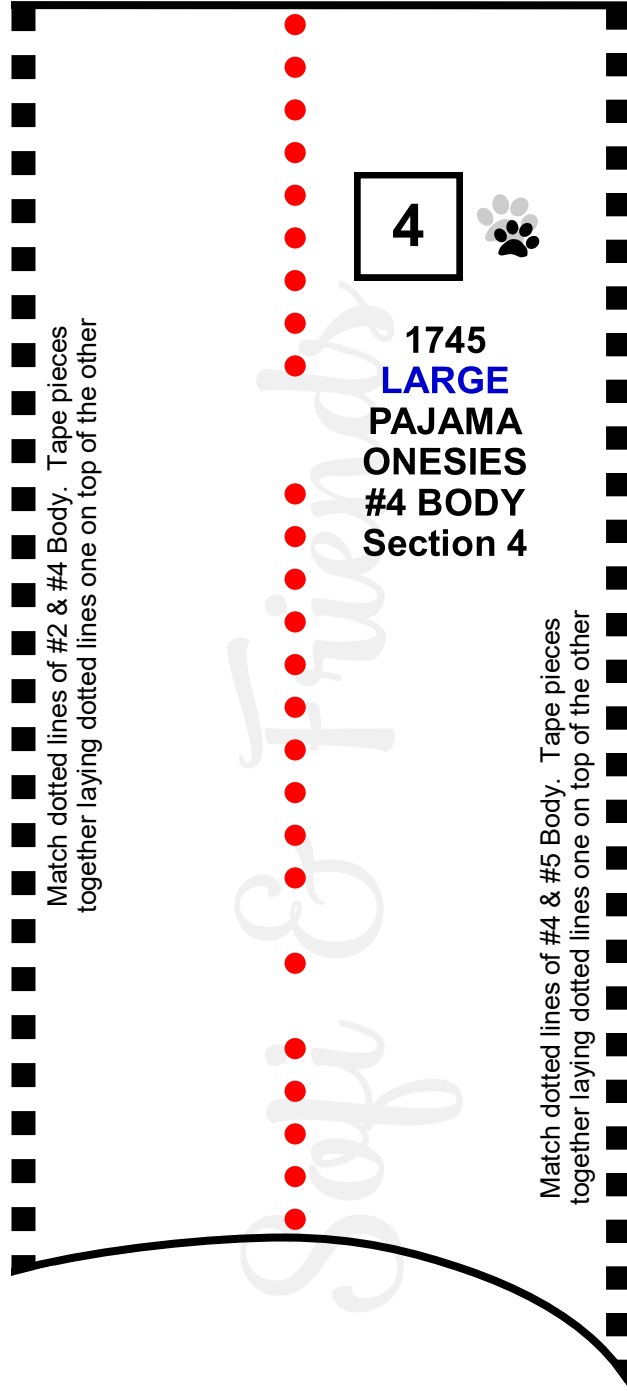


Sofi & Friends



Cut on outside edge
of dotted line

Match dotted lines of #2 & #4 Body. Tape pieces
together laying dotted lines one on top of the other



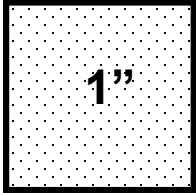
4 

1745
LARGE
PAJAMA
ONESIES
#4 BODY
Section 4

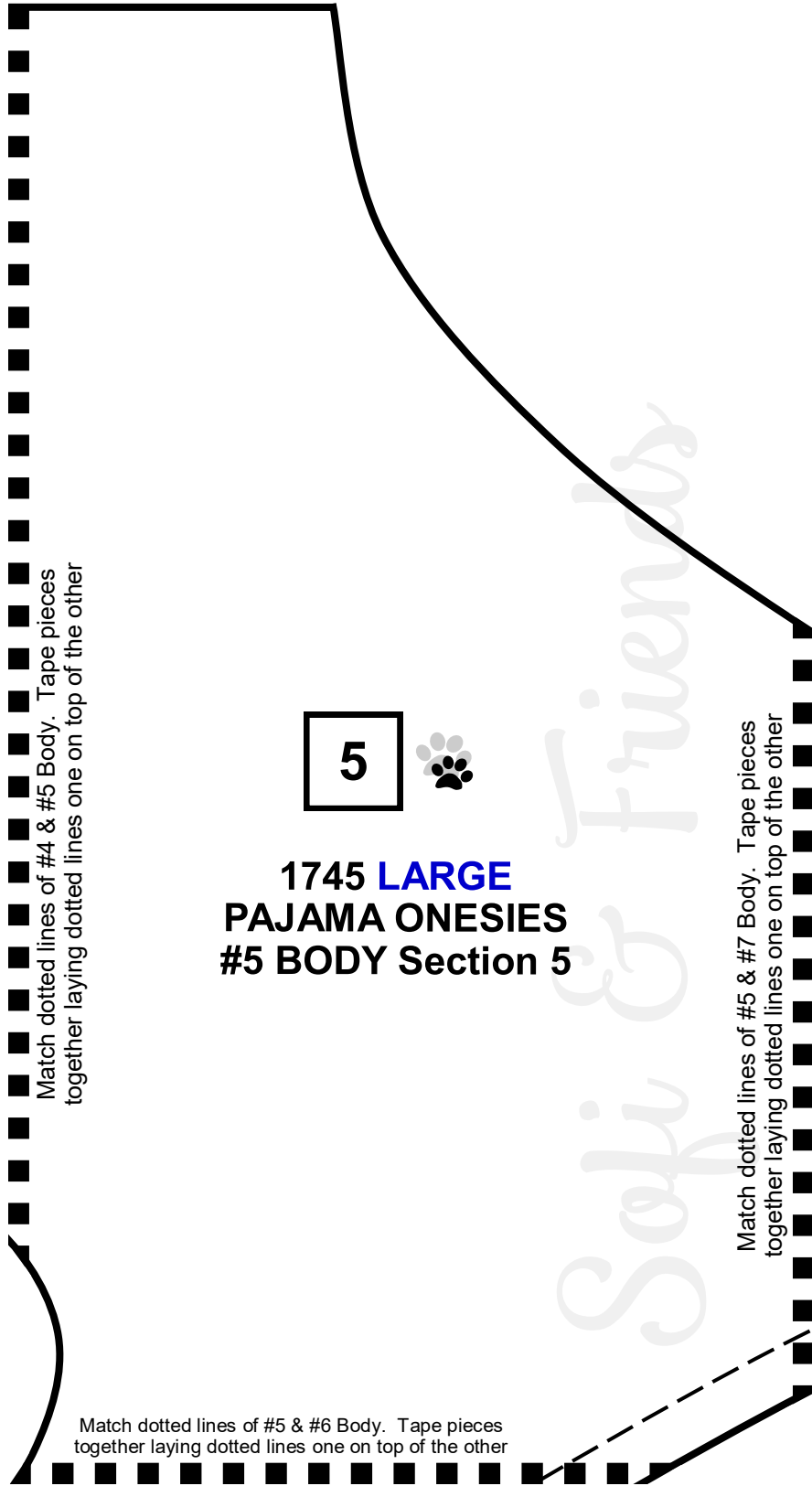
Match dotted lines of #4 & #5 Body. Tape pieces
together laying dotted lines one on top of the other

Cut on outside edge
of dotted line

Sofi & Friends



Cut on outside edge
of dotted line



Match dotted lines of #4 & #5 Body. Tape pieces
together laying dotted lines one on top of the other

5



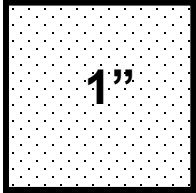
1745 **LARGE**
PAJAMA ONESIES
#5 BODY Section 5

Match dotted lines of #5 & #7 Body. Tape pieces
together laying dotted lines one on top of the other

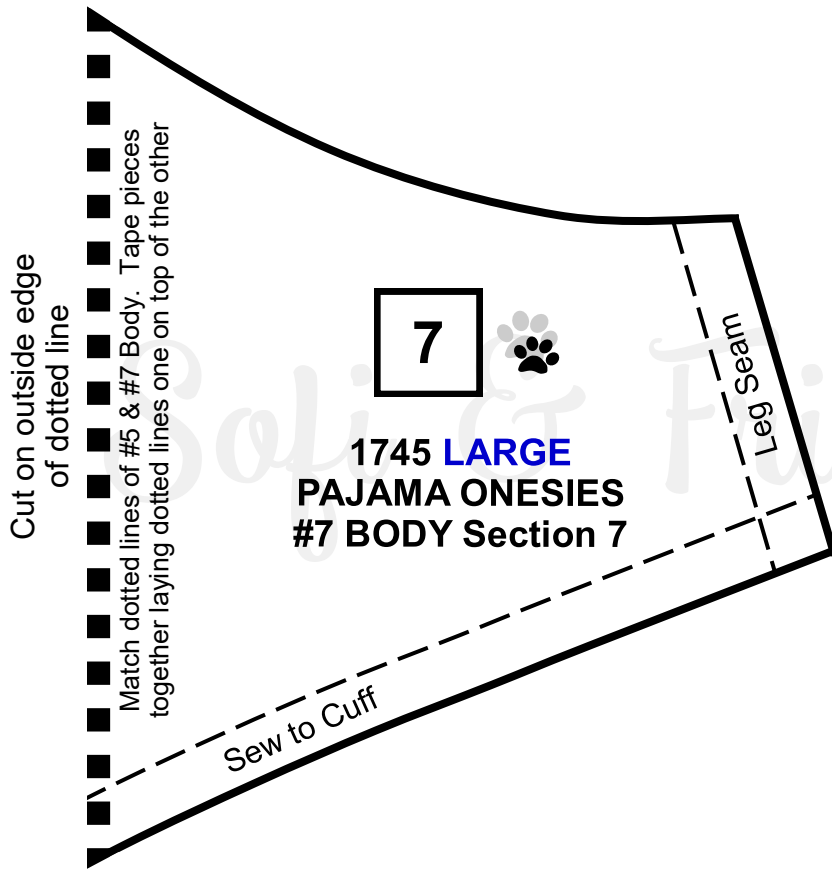
Cut on outside edge
of dotted line

Match dotted lines of #5 & #6 Body. Tape pieces
together laying dotted lines one on top of the other

Cut on outside edge
of dotted line

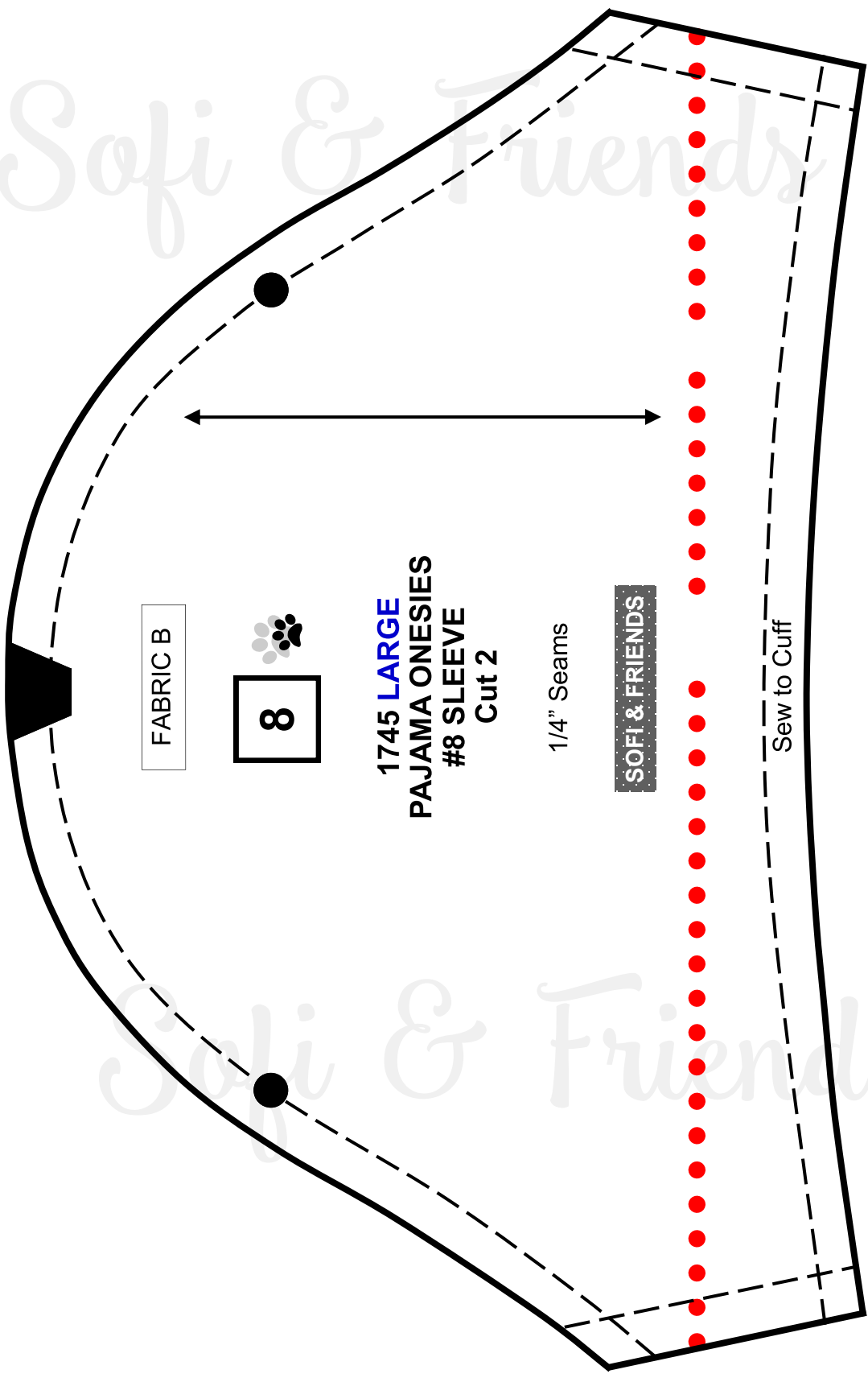


Sofi & Friends



Sofi & Friends

Sofi & Friends



FABRIC B

8

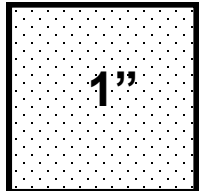


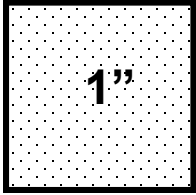
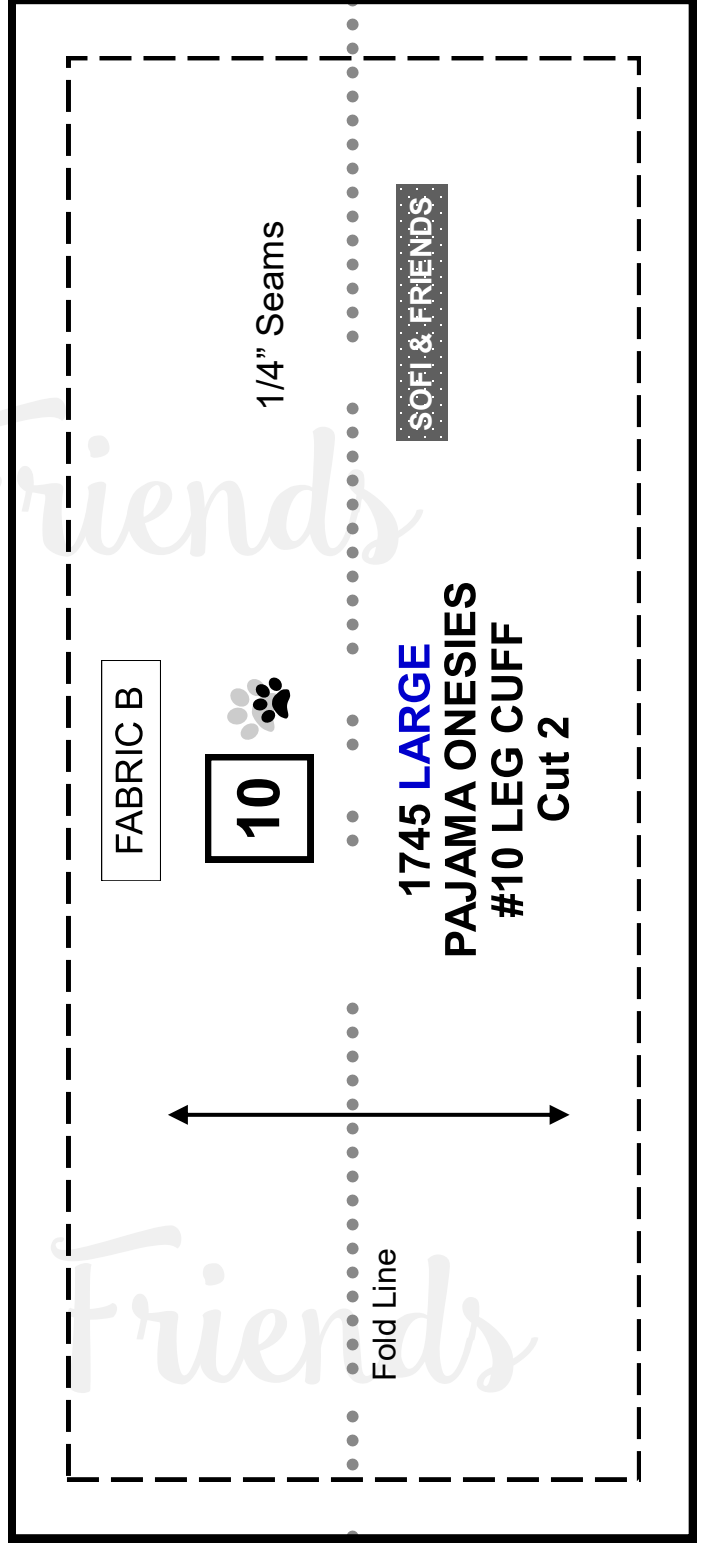
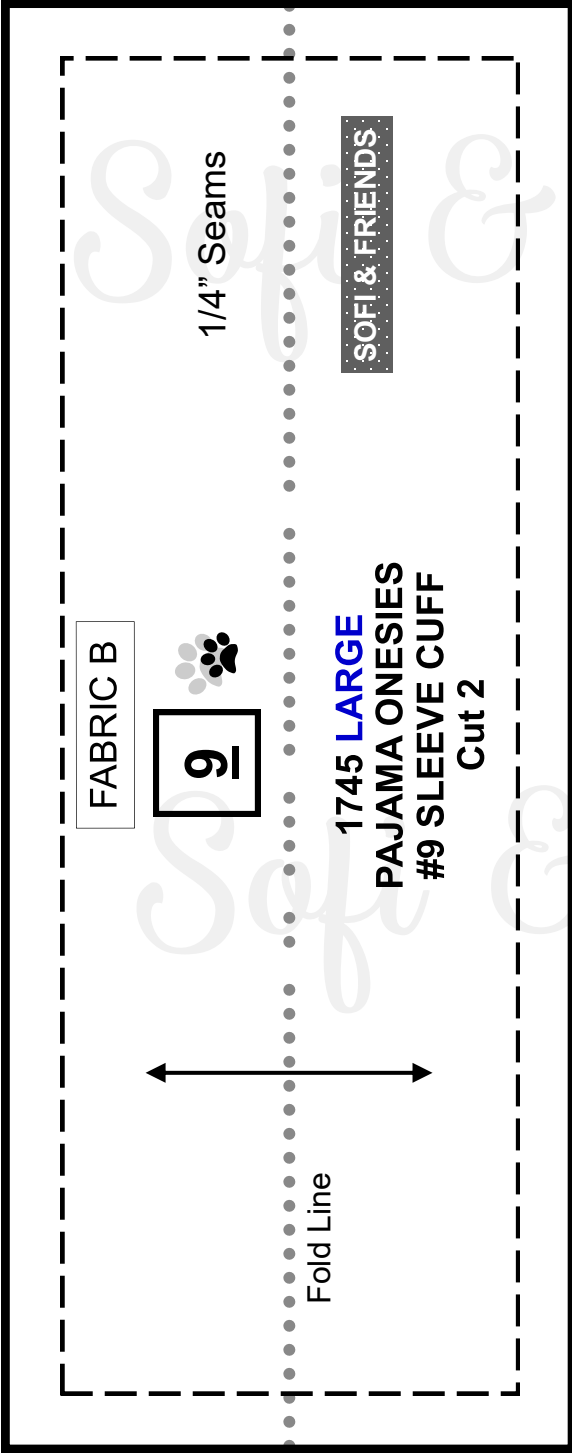
1745 LARGE
PAJAMA ONESIES
#8 SLEEVE
Cut 2

1/4" Seams

SOFI & FRIENDS

Sew to Cuff



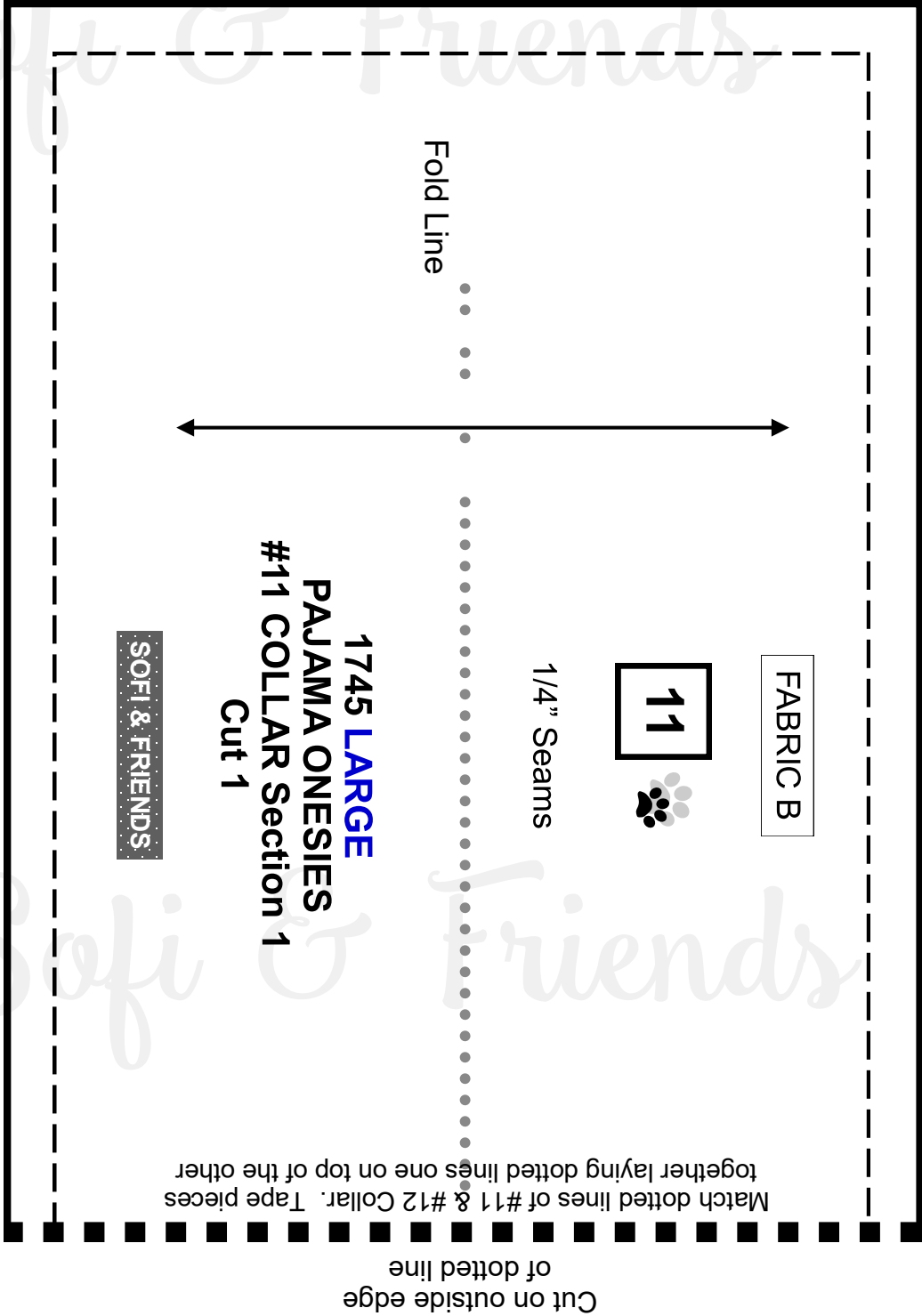
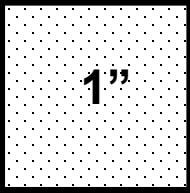


Sofi & Friends

Sofi & Friends

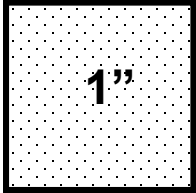
Sofi &

Friends



Sofi & Friends


Sofi & Friends



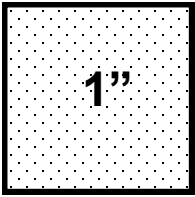
Sofi & Friends

Cut on outside edge
of dotted line

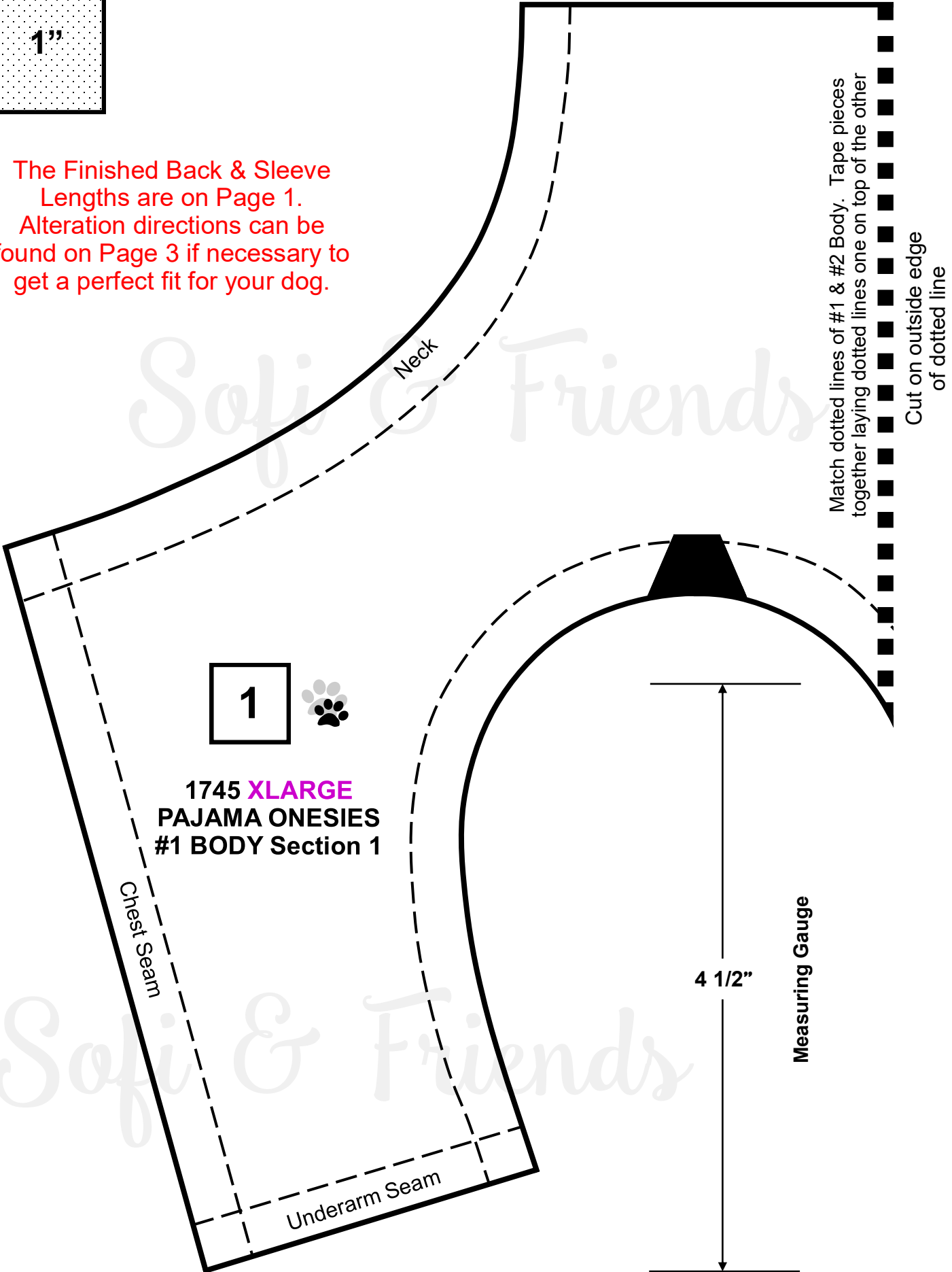
Match dotted lines of #11 & #12 Collar. Tape pieces together laying dotted lines one on top of the other

12 

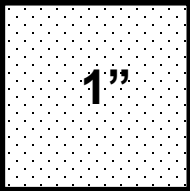
**1745 LARGE
PAJAMA ONESIES A&B
#12 COLLAR Section 2**



The Finished Back & Sleeve Lengths are on Page 1.
Alteration directions can be found on Page 3 if necessary to get a perfect fit for your dog.



Sofi & Friends

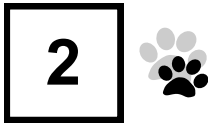


Cut on outside edge
of dotted line

Match dotted lines of #1 & #2 Body. Tape pieces
together laying dotted lines one on top of the other

FOLD

FABRIC A



**1745 XLARGE
PAJAMA ONESIES
#2 BODY Section 2
Cut 1 on Fold**

3/8" Seams

SOFI & FRIENDS

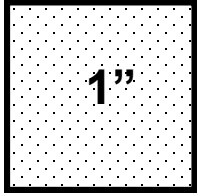
Match dotted lines of #2 & #4 Body. Tape pieces
together laying dotted lines one on top of the other

Cut on outside edge
of dotted line

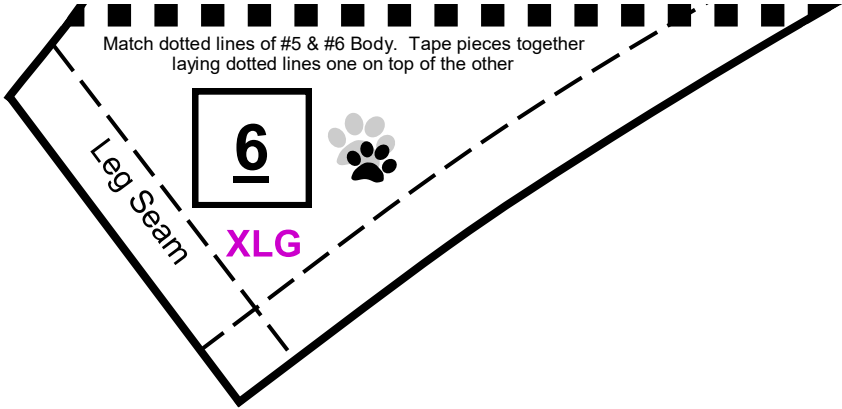
Match dotted lines of #2 & #3 Body. Tape pieces to-
gether laying dotted lines one on top of the other

Cut on outside edge
of dotted line

Sofi & Friends

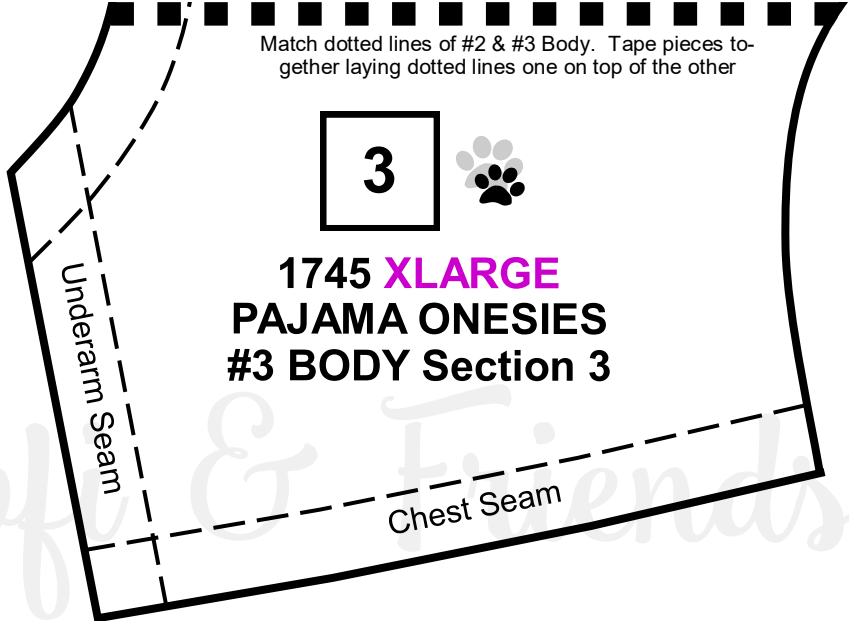


Cut on outside edge
of dotted line



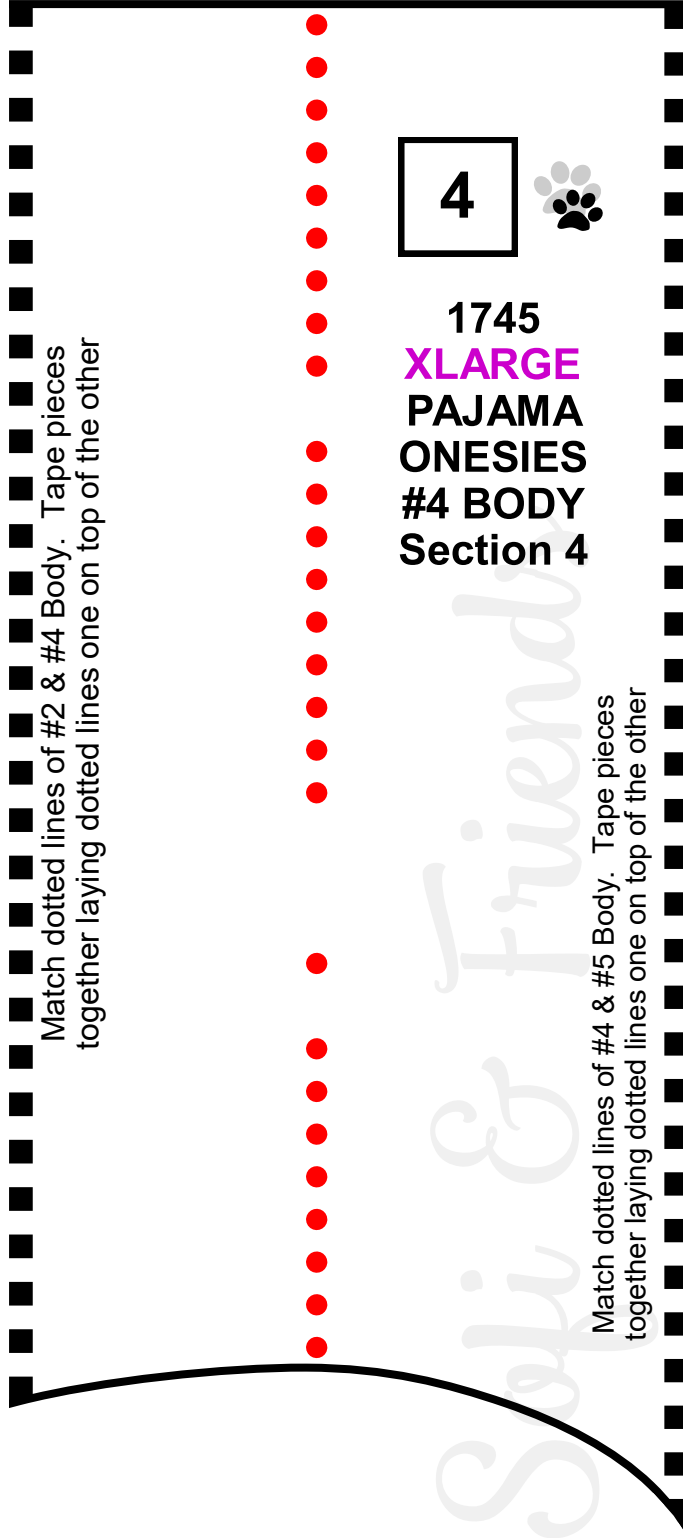
Sofi & Friends

Cut on outside edge
of dotted line



Sofi & Friends

Cut on outside edge
of dotted line



Match dotted lines of #2 & #4 Body. Tape pieces
together laying dotted lines one on top of the other

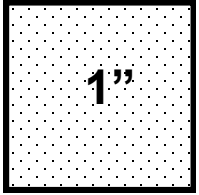
4

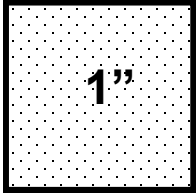


1745
XLARGE
PAJAMA
ONESIES
#4 BODY
Section 4

Match dotted lines of #4 & #5 Body. Tape pieces
together laying dotted lines one on top of the other

Cut on outside edge
of dotted line





5



**1745 XLARGE
PAJAMA ONESIES
#5 BODY Section 5**

Cut on outside edge
of dotted line

Match dotted lines of #4 & #5 Body. Tape pieces
together laying dotted lines one on top of the other

Match dotted lines of #5 & #7 Body. Tape pieces
together laying dotted lines one on top of the other

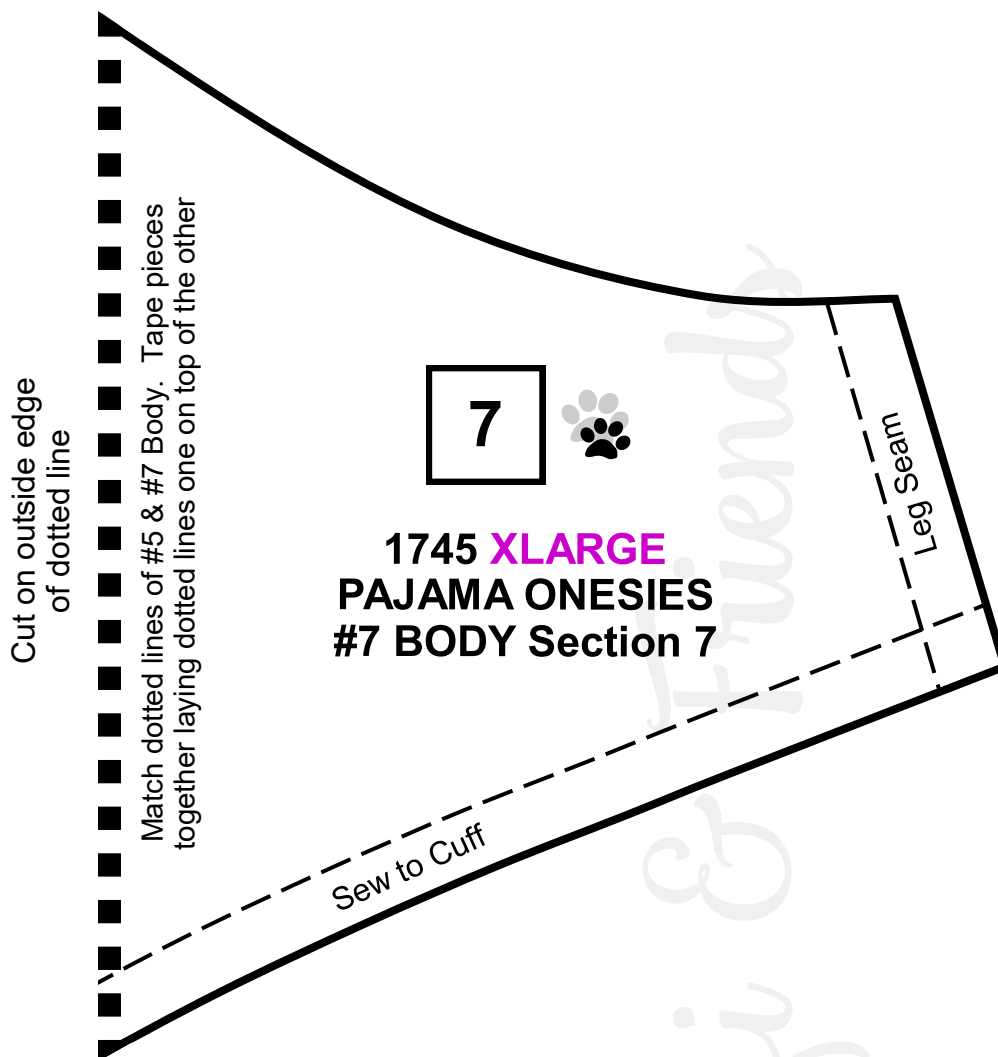
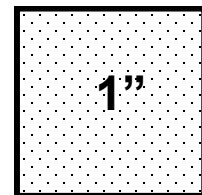
Cut on outside edge
of dotted line

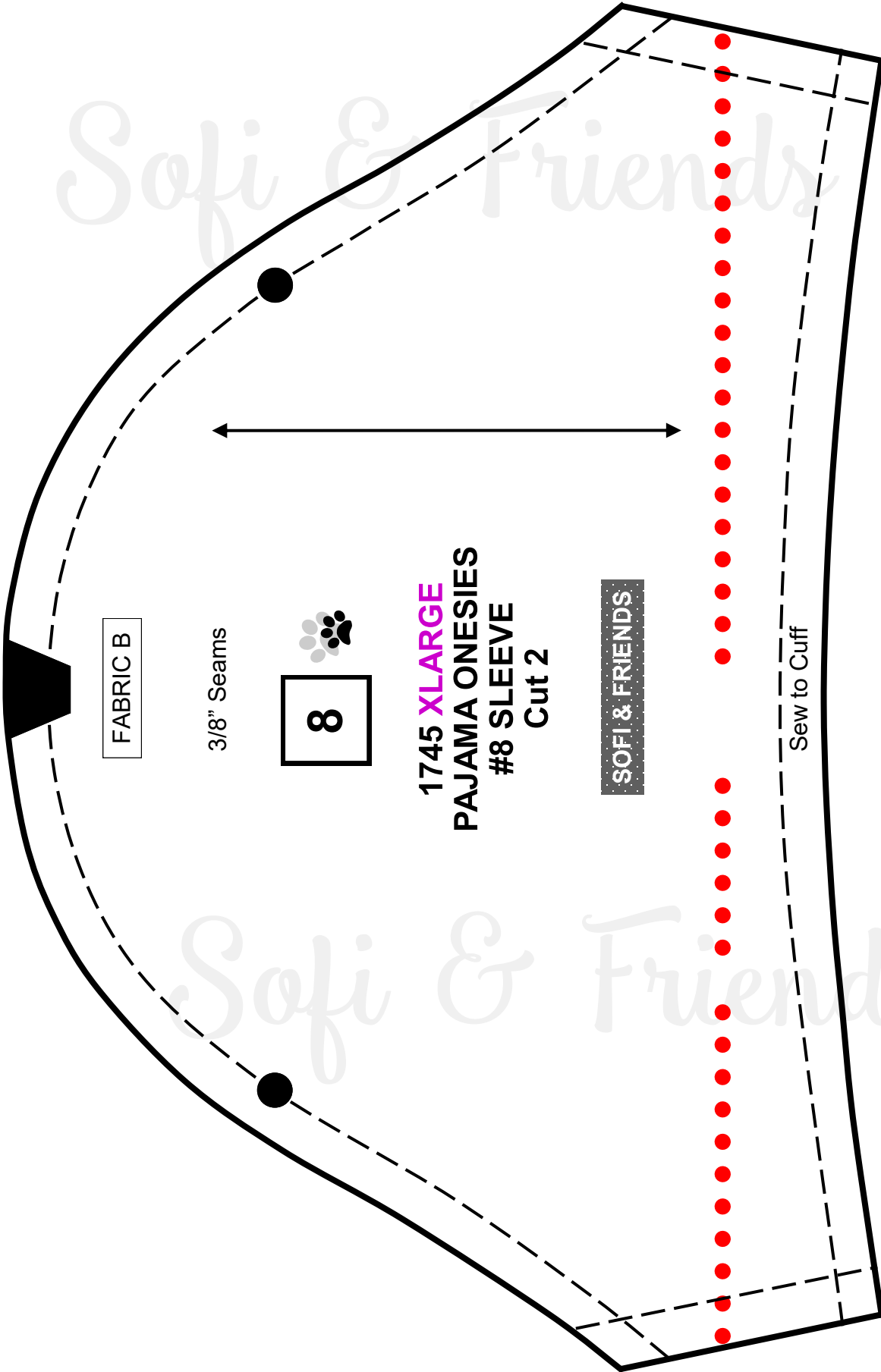
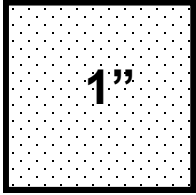
Match dotted lines of #5 & #6 Body. Tape pieces together
laying dotted lines one on top of the other

Cut on outside edge
of dotted line

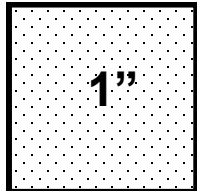
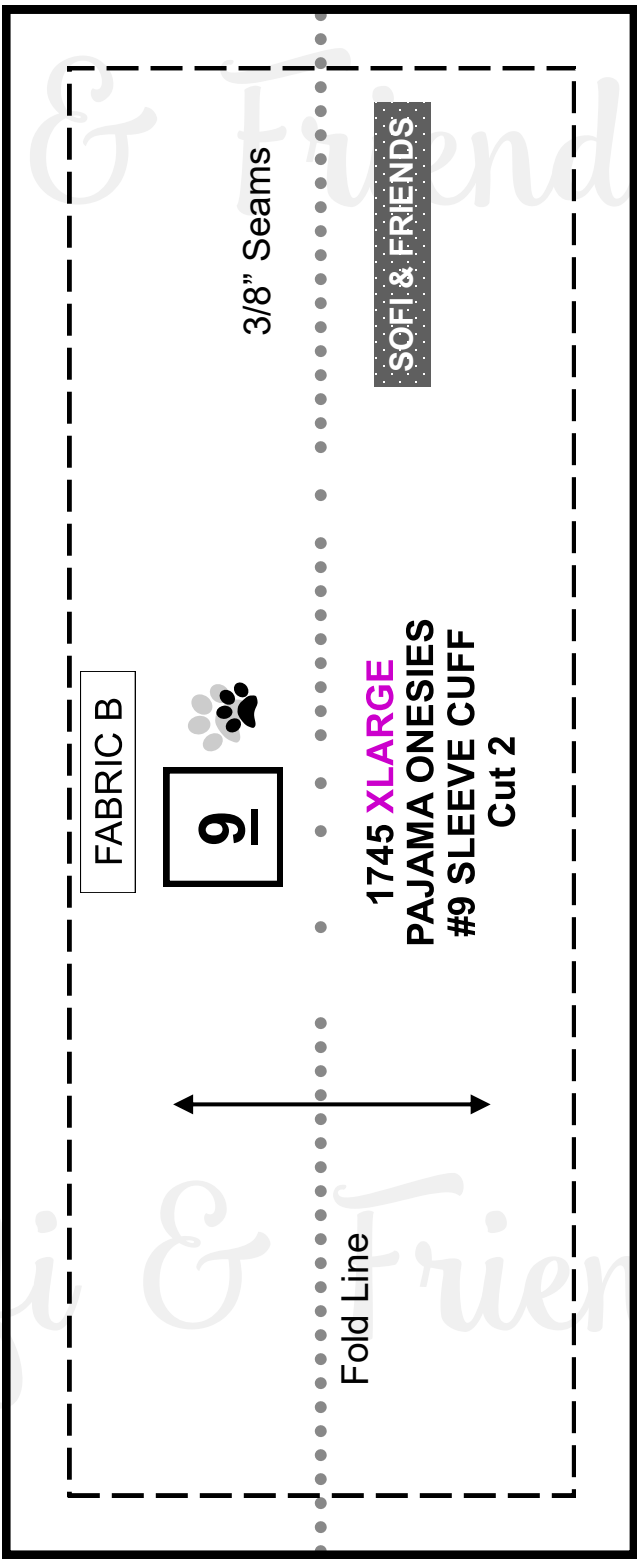
Sofi & Friends

Sofi & Friends

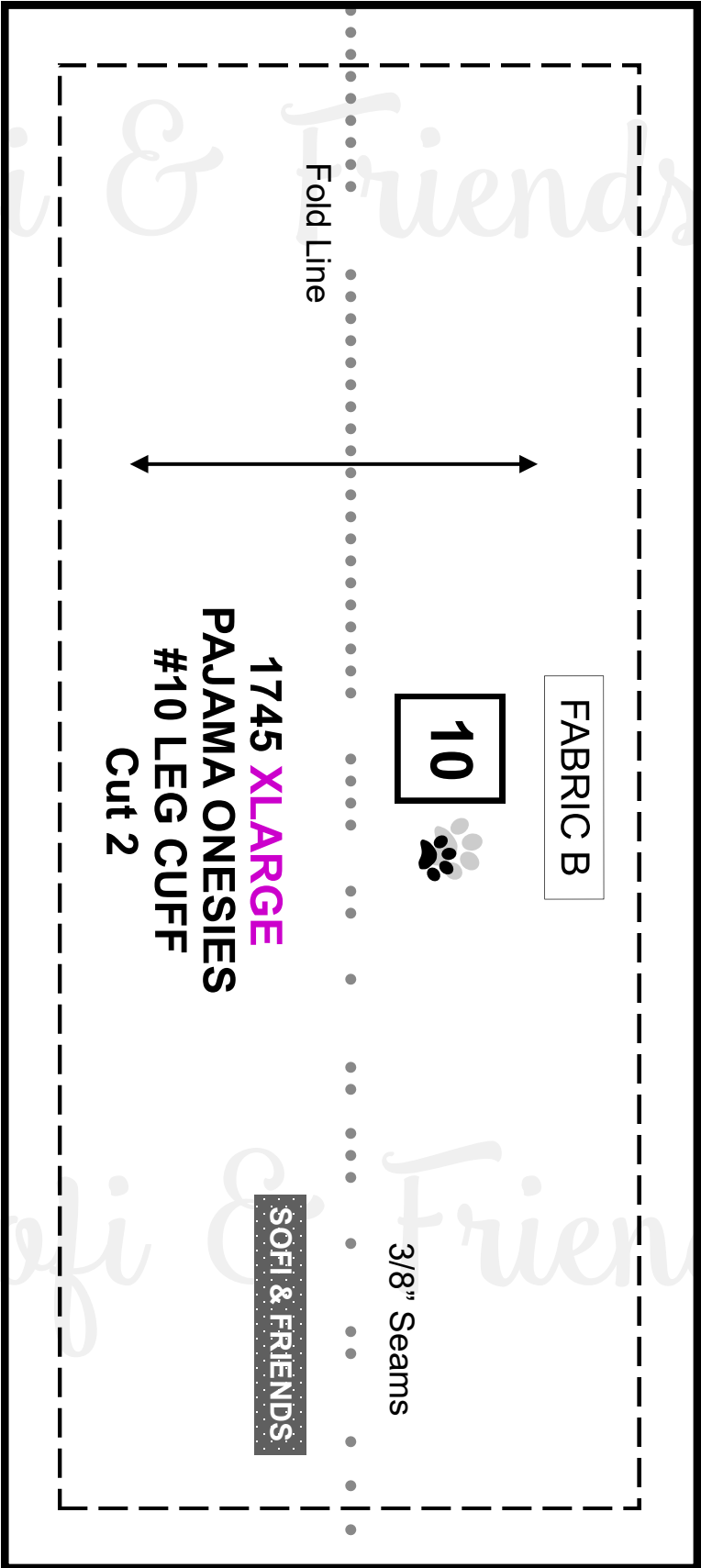
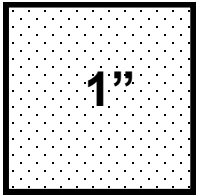




Sofi & Friends

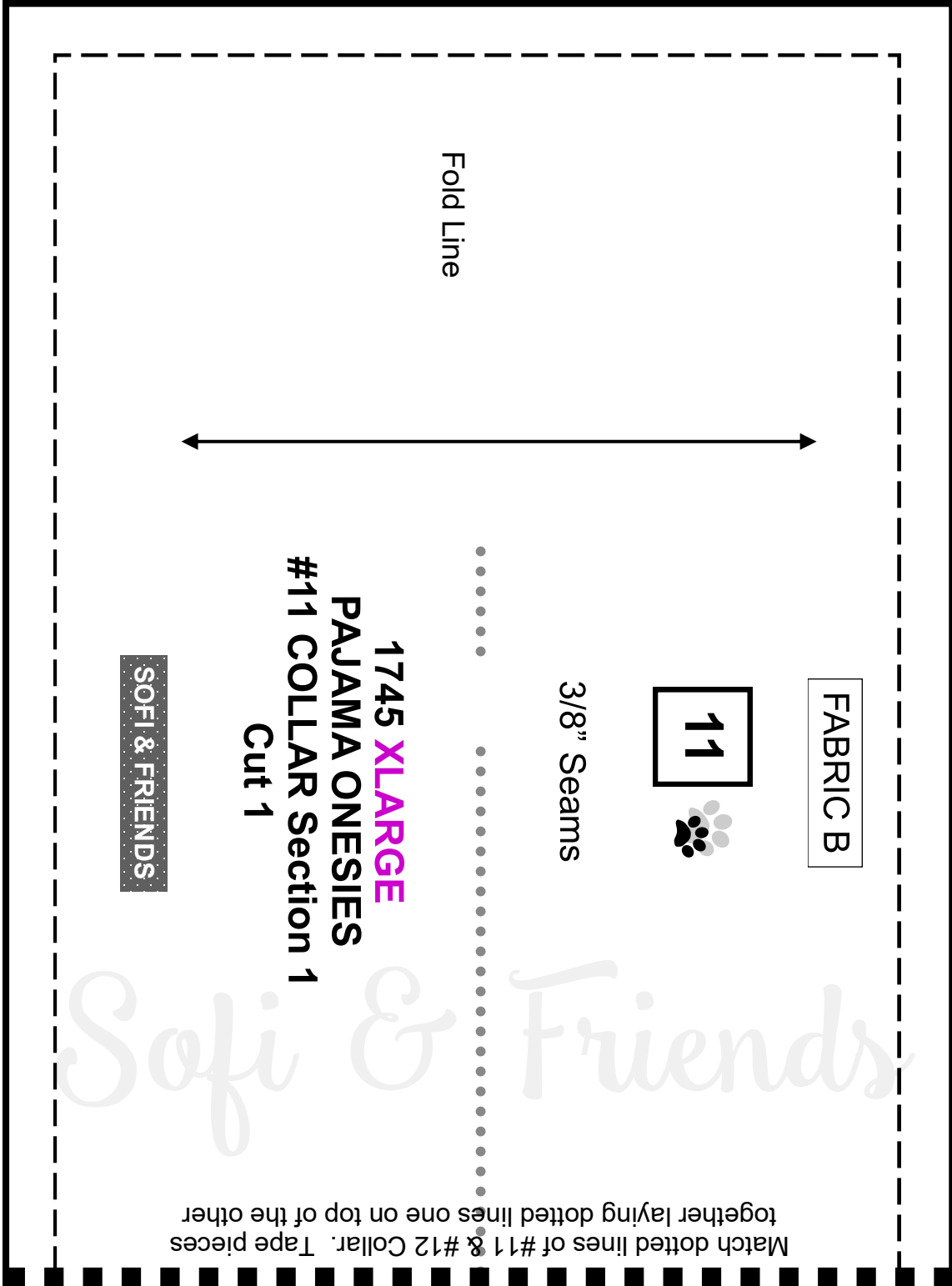
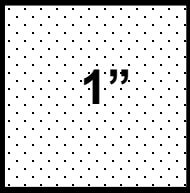


Sofi & Friends



Sofi & Friends

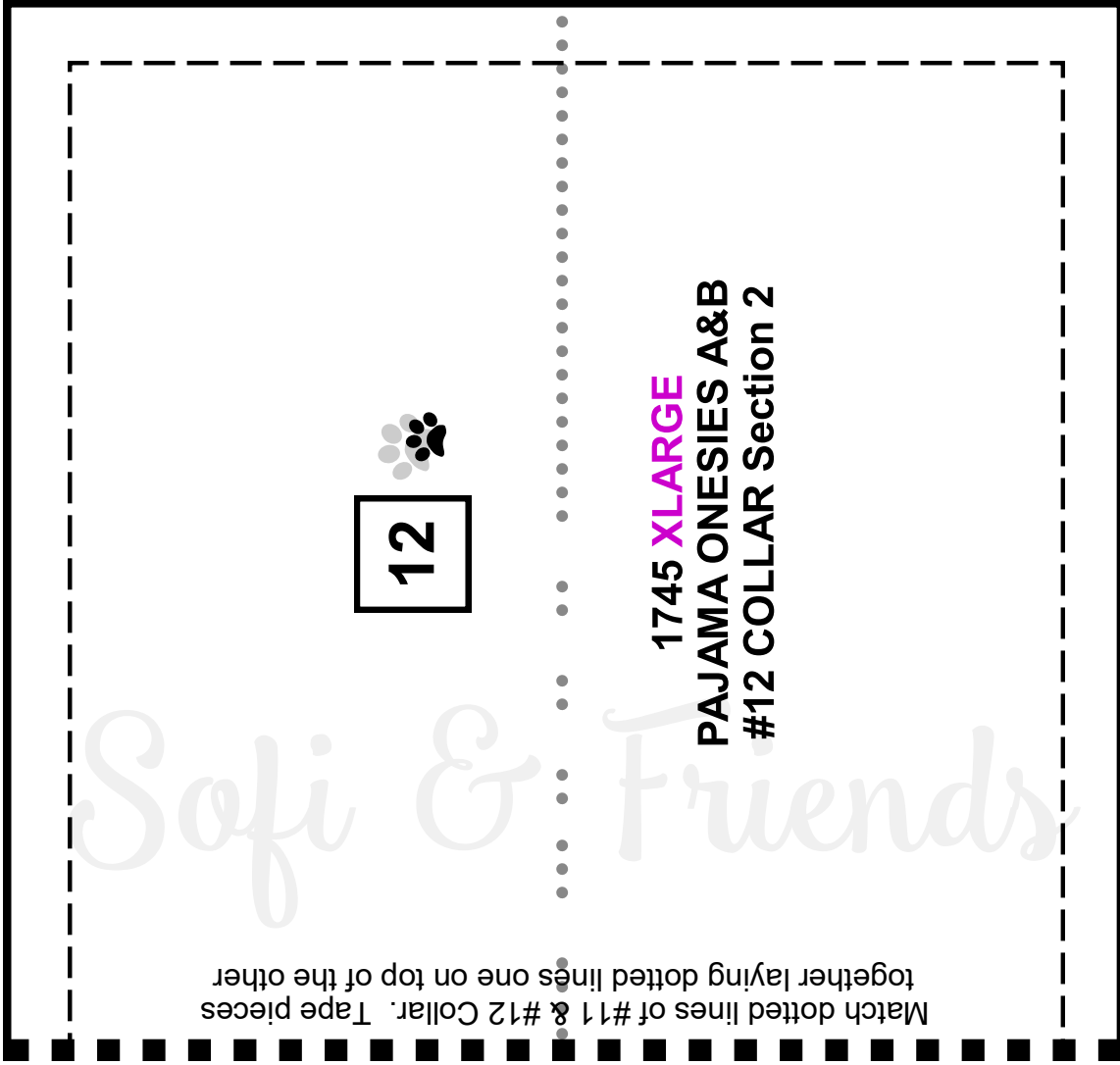
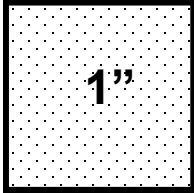
Sofi & Friends



Cut on outside edge of dotted line

Match dotted lines of #11 & #12 Collar. Tape pieces together laying dotted lines one on top of the other

Sofi & Friends



Cut on outside edge
of dotted line

Match dotted lines of #11 & #12 Collar. Tape pieces
together laying dotted lines one on top of the other

Sofi & Friends