

1579

Size XXSm - XXLg

Includes pattern & instructions



FUNtastic Patterns for Little Dogs!



Diva Doggie Diaper A

Diva Doggie Diaper B



© 2014 Sofi & Friends * Sold for personal use only and not for commercial or manufacturing purposes

**To print patterns properly select the following options in Adobe Reader print section:
Size Options - "Actual Size"
Orientation - "Auto portrait/landscape"**

Pattern 1579
Size XXSm to XXLg



Diva Doggie Diaper A



Diva Doggie Diaper B

SUGGESTED FABRICS: Light to Medium weight cotton & cotton blends; flannel for lining

NOTIONS - Diaper A: ribbon bow

BOTH Diapers: thread;

Fusible interfacing - sheerweight (XXSm to XLg) or featherweight (XXLg);

1 yard 5/8" FOE (fold over elastic); knit elastic for waistband; Velcro;

See pg. 7 for elastic sizes and pg. 12 for Velcro sizes

BODY MEASUREMENTS - See measurement image on next page

	XXS	XS	SM	MED	LG	XLG	XXLG
Belly	7 - 8 1/2"	8 1/2 - 10"	10 - 11 1/4"	11 1/4 - 12 3/4"	12 3/4 - 14 1/4"	14 1/4 - 16 1/2"	16 1/2 - 19"
Neck	5 1/2 - 7"	6 1/2 - 8"	7 - 8 1/2"	7 3/4 - 9 1/4"	9 - 10 1/2"	10 - 11 1/2"	12 - 13 1/2"
Girth	9 1/4 - 10 3/4"	10 1/2 - 12"	12 - 13 1/2"	13 1/4 - 14 3/4"	15 - 16 3/4"	16 1/2 - 18 1/2"	19 - 21"
Length	7 3/8"+	8 1/8"+	8 7/8"+	10"+	10 5/8"+	12"+	13 3/4"+

Measuring your Dog - use a soft tape measure keeping it a bit loose; you should be able to slide a finger between the dog and tape

BELLY: Measure just in front of dogs back legs

NECK: Measure around widest part of neck where collar sits

GIRTH: Measure behind front legs where chest starts

LENGTH: Measure from base of neck (between shoulder blades) to where tail starts

DIVA DOGGIE DIAPER A

Fabric A	1/4	1/4	1/4	1/3	1/3	3/8	3/8
45" (yd)							
Fabric B	1/4	1/3	1/3	3/8	1/2	1/2	1/2
45" (yd)							
Flannel Lining	1/4	1/3	1/3	3/8	1/2	1/2	1/2
45" (yd)							
Interfacing	1/4	1/4	1/4	1/4	1/4	1/4	1/4
20" (yd)							

DIVA DOGGIE DIAPER B

Fabric A	1/3	1/3	3/8	3/8	1/2	1/2	1/2
45" (yd)							
Flannel Lining	1/4	1/3	1/3	3/8	1/2	1/2	1/2
45" (yd)							
Interfacing	1/4	1/4	1/4	1/4	1/4	1/3	1/3
20" (yd)							

Use 1/4" (XXSm to Lg) or 3/8" (XLg to XXLg) seam allowance on all seams unless otherwise noted. Press all seam allowances as noted in instructions.

Pattern Markings

←→ Grainline - Place on straight grain of fabric, parallel to selvage or fold.

FOLD Place line on fold of fabric.

GLOSSARY

EASESTITCH-Stitch along seamline, using long machine stitches. Pull thread ends to adjust the fit.

GATHER-Stitch along seamline using long machine stitches. Pull thread ends to adjust the fit.

REINFORCE-Stitch again along seamline using small machine stitches.

TOPSTITCH-On outside, stitch 1/8" to 3/16" from seam depending on size of pattern.

CLIP CURVES-Notch inside curves and clip outside curves.

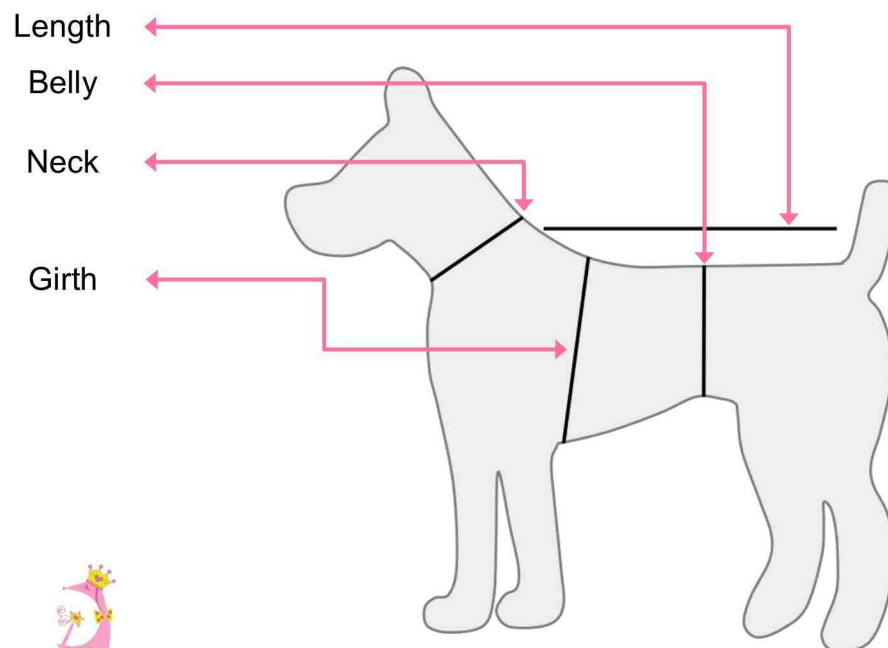
TRIM CORNERS-Trim excess fabric from outside corners.

FINISH EDGE-Use a zigzag stitch, or stitch of your choice, to finish raw edge of fabric.

TIPS

Use knitting needle to **gently** turn square corners right side out.

Overlap Velcro right over left and place softer side of Velcro on right side of garment. It will be softer for the dog if Velcro comes into contact with the skin.



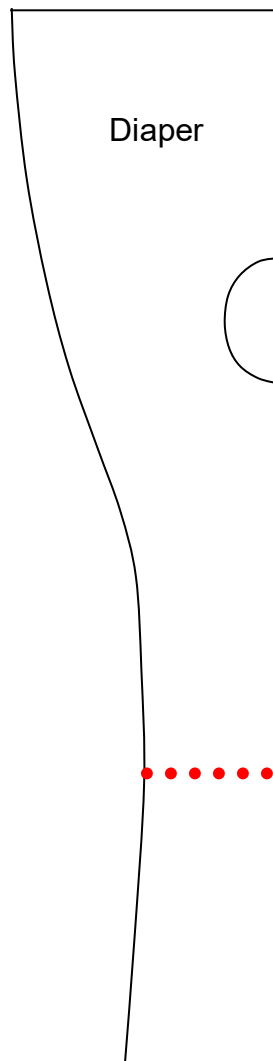
Altering Belly

Add to or trim from RED line to alter belly size



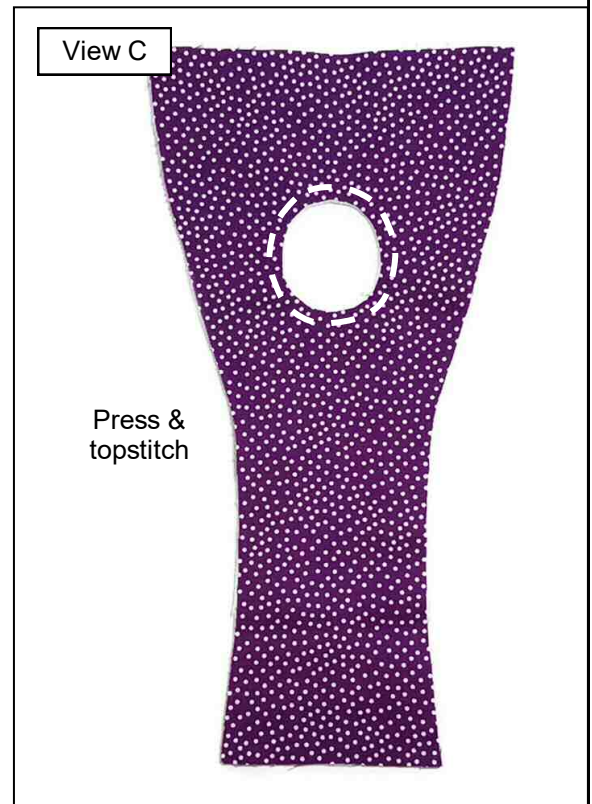
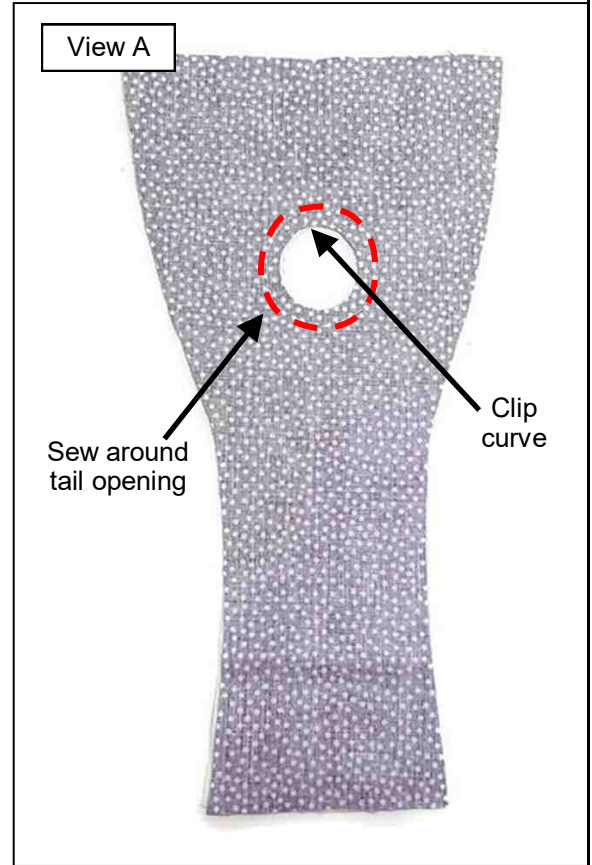
Altering Length

Add to or trim from RED dotted line to shorten or lengthen diaper



SEWING INSTRUCTIONS

- 1) RIGHT sides together sew flannel lining to Diaper around tail opening. Clip curve. (View A)
- 2) Pull flannel lining through Diaper tail opening and turn right side out. (View B)

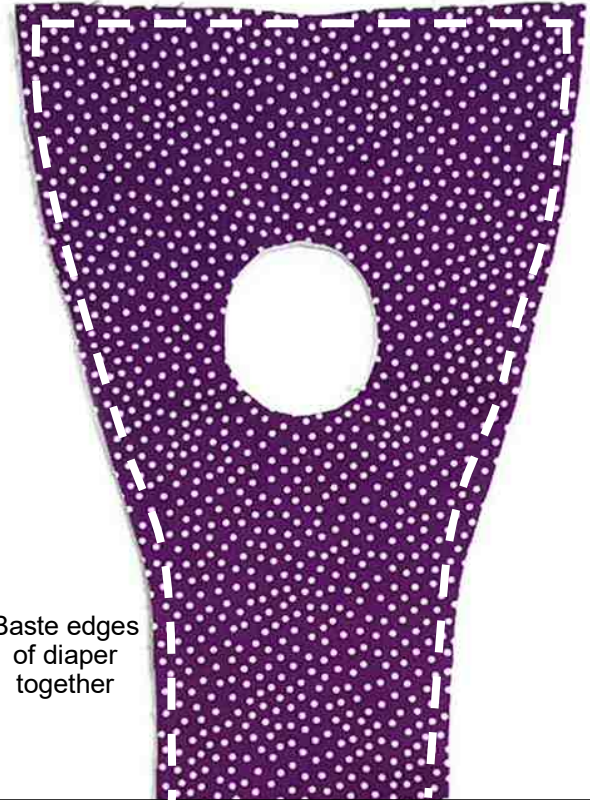


- 3) Press & topstitch tail opening. (View C)

4) Baste close to all edges of diaper. (View D)

5) Fold & pin FOE (Fold Over Elastic) to top edge of diaper as shown. (View E)

View D



View E



View F



6) Sew FOE to diaper leg openings using a 3 point zigzag stitch (or a wide regular zigzag) stretching FOE 1 1/2 to 2 times its length. (View F)

7) Following manufacturer's instructions apply interfacing to Waistband.

8) RIGHT sides together lay narrow end of diaper on top of Waistband centering between notches. (View G)

Note: upper edge of diaper will line up evenly with Waistband edge.



9) Baste diaper to Waistband. (View G)

10) RIGHT side down lay Waistband lining over top of diaper matching Waistband edges. (View H)

11) Sew through all thicknesses leaving open between squares. (View H)

12) Trim corners. (View H)



13) Turn Waistband right side out & press.

14) Fold & press hem on both sides of Waistband opening. (View I)



View J

Sew casings
for elastic



15) To make casing for elastic stitch close to upper and lower edges of Waistband and along center of Waistband as shown. Refer to pattern placement line for length of casing. (View J)

Note: There will be an opening on each side of Waistband between squares and casing to run elastic in and out of Waistband.

16) Using a safety pin run elastic through both casings. (View K)

Suggested elastic sizes

XXSmall	3/8"	Large	3/4"
XSmall	1/2"	XLarge	3/4"
Small	1/2"	XXLarge	1"
Medium	1/2"		

View K

Run elastic through
both casing sections



17) After elastic is pulled through both casings sew ends of elastic in place on one side of Waistband. (View L)

Tip: stitch ends of elastic 2-3 times for added strength.



View M



18) Stretch both pieces of elastic with a medium tension. Sew elastic ends in place & trim. (View M)

Tip: stitch ends of elastic 2-3 times for added strength.

19) Hand sew Waistband openings. (View N)



20) Following manufacturer's instructions apply interfacing to Back Band.

21) RIGHT sides together sew Back Band to lining on three sides leaving notched edge open. Trim corners. (View O)

22) Turn Back Band right side out and press.

View O



23) RIGHT sides together sew Ruffle to lining on three sides leaving one long edge open. Trim corners. (View P)

View P



24) Turn Ruffle right side out. Press & topstitch. (View Q)

View Q

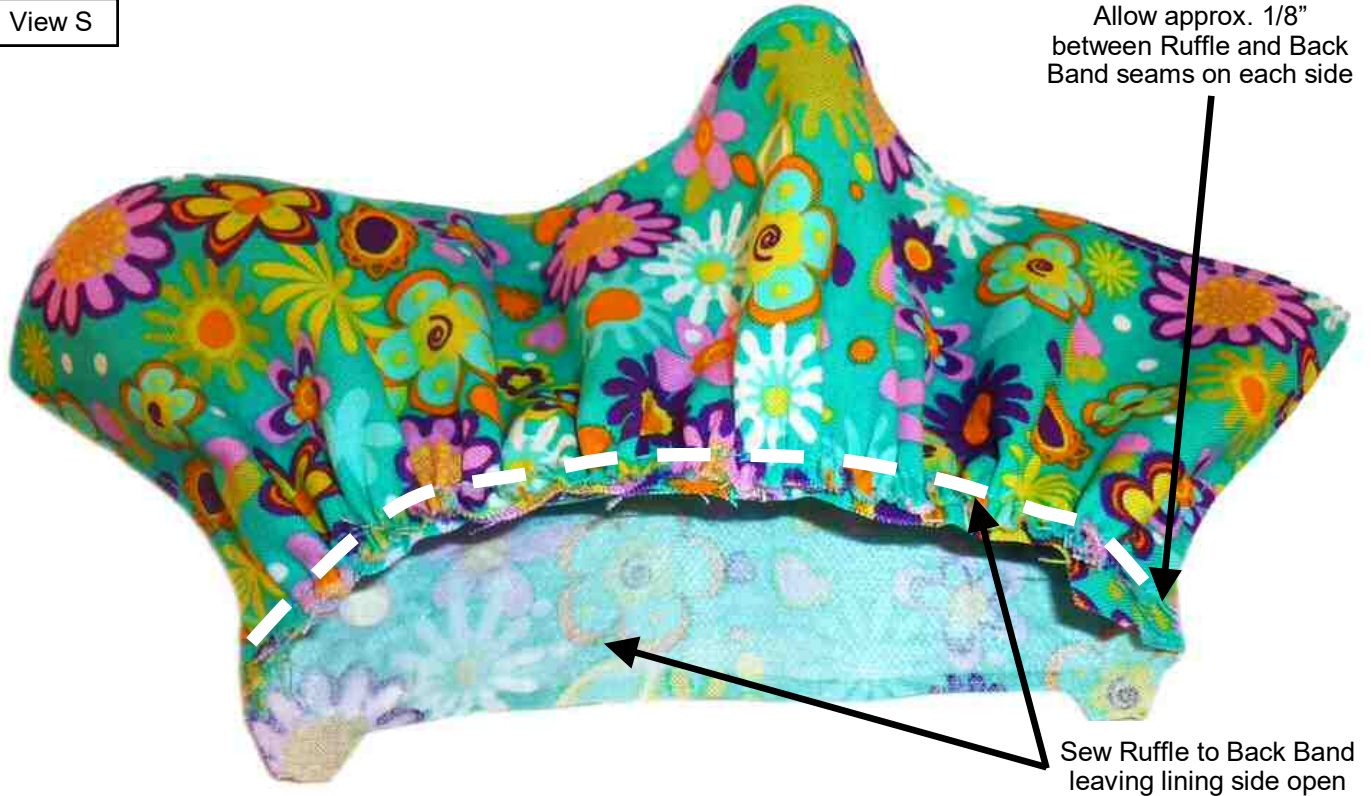


25) Gather unfinished edge of Ruffle to fit Back Band. (View R)

View R



View S



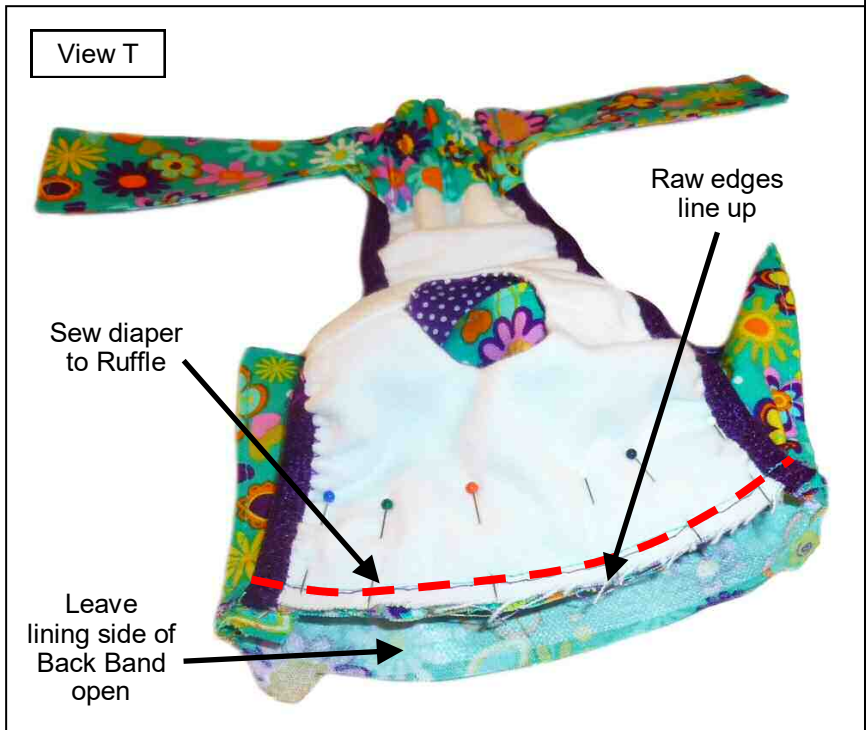
26)RIGHT sides together sew Ruffle to Back Band leaving lining side of Back Band open. (View S)

Note: allow approx. 1/8" between Ruffle & Back Band seams on each side.

View T

27)RIGHT side down pin diaper to top of Ruffle centering between notches. (View T)
 Note: raw edge of diaper will line up evenly with raw edges of Ruffle and Back Band.

28)Sew diaper to Ruffle and Back Band leaving lining side of Back Band open. (View T)



29) Open Back Band and fold hem over diaper. Hand sew hem in place. (View U)



30) Topstitch Back Band. (View V)



31) Sew rough side (hook side) of Velcro to RIGHT side of Back Band. (View W)

Suggested Velcro width x length
(1 piece per diaper)

XXSmall	1" x 4 1/2"
XSmall	1" x 5"
Small	1 1/2" x 5 1/2"
Medium	1 1/2" x 6 1/4"
Large	1 1/2" to 2" x 6 3/4"
XLarge	2" x 7 1/2"
XXLarge	2" x 8 1/2"



32) Sew soft side (loop side) of Velcro to WRONG side of Waistband. (View X)

Suggested Velcro width x length
(2 pieces per diaper)

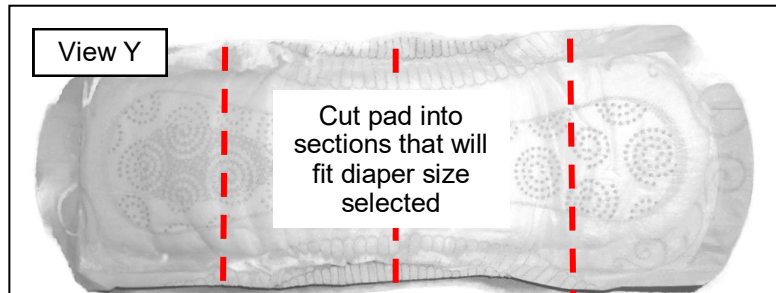
XXSmall	1" x 2 1/4"
XSmall	1" x 2 1/2"
Small	1 1/2" x 2 3/4"
Medium	1 1/2" x 3"
Large	1 1/2" to 2" x 3 1/4"
XLarge	2" x 3 3/4"
XXLarge	2" x 4"



33) Use disposable maxi pads with adhesive backs as liners for the diaper. (View Y)

Note: use incontinence pads such as Tena or Poise for diaper sizes Large, XLarge & XXLarge. The incontinence pads are larger, thicker and will absorb more fluids.

34) Cut pad into sections to fit size of diaper selected. (View Y)



35) Place pad inside diaper & change as necessary. (View Z)



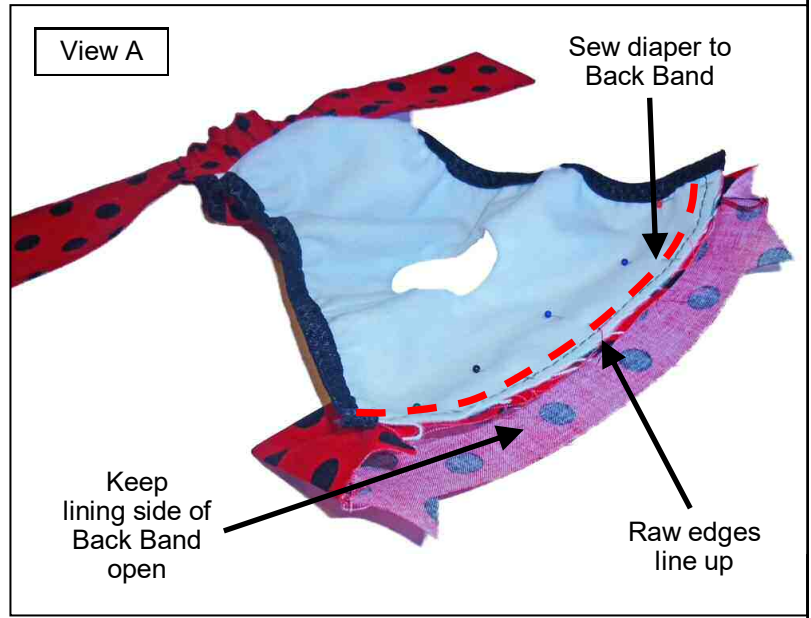
36) Optional: add bow to top center of Ruffle just below Waistband using a sew on snap.
(View AA)
Note: Bow will be removable for washing.

37) Finished Diaper with Bow.
(View BB)

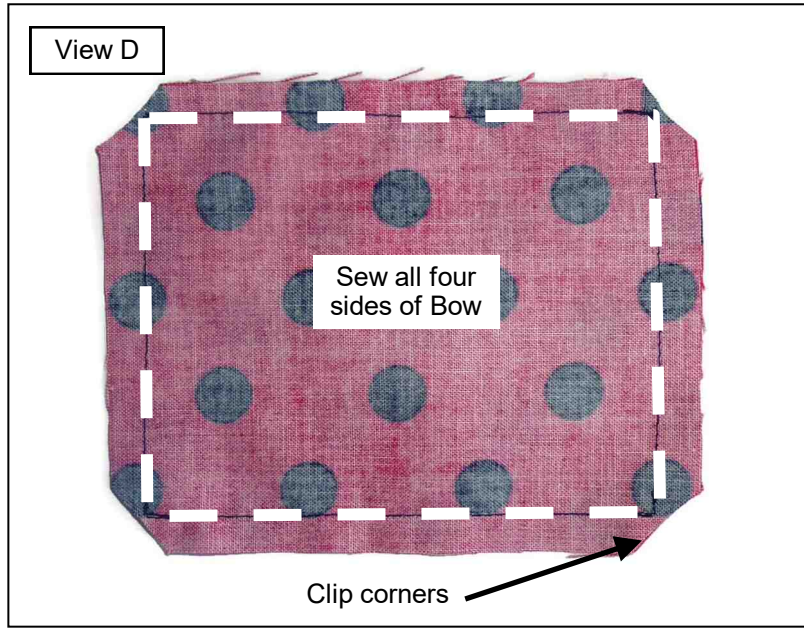


SEWING INSTRUCTIONS

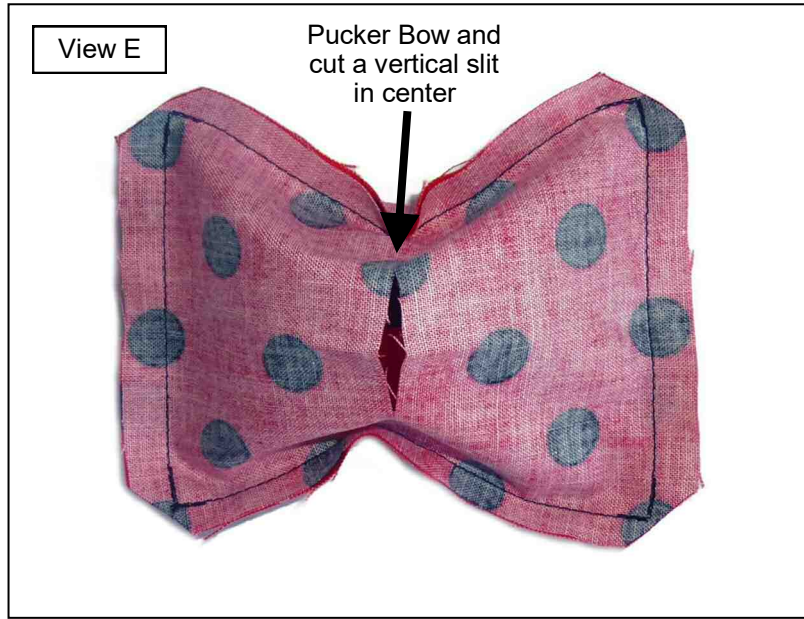
- 1) Follow instructions for Diaper A Steps 1 through 22.
- 2) RIGHT side down pin diaper to top of Back Band centering between notches. (View A)
 Note: raw edge of diaper will line up evenly with raw edge of Back Band.
- 3) Sew diaper to Back Band keeping lining side of Back Band open. (View A)
- 4) Open Back Band & fold hem over diaper. Hand sew hem in place. (View B)
- 5) Topstitch Back Band. (View C)
- 6) Follow instructions for Diaper A Steps 31 through 35.



7) RIGHT sides together sew hem on all four sides of Bow. Trim corners. (View D)

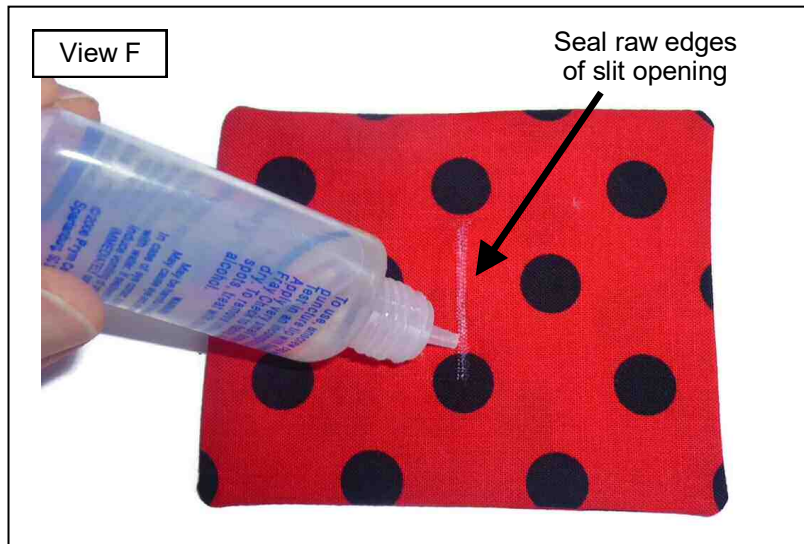


8) "Pucker" one side of Bow and cut a vertical slit in the center. (View E)



9) Pull Bow right side out through slit & press.

10) Use Fray Check on slit opening. (View F)



11) Fold & press Bow Knot per pattern instructions. (View G)

View G



Fold and press
Bow Knot

12) Pinch center of Bow and wrap Knot around middle. Overlap and sew or glue Knot ends together. (View H)

13) Trim ends of Knot as necessary.

View H



Secure Knot
around middle
of Bow

14) Attach bow to back of diaper using a sew on snap or Velcro. Bow will be removeable for washing. (View I)

View I

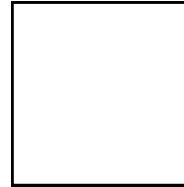


Attach Bow
to diaper

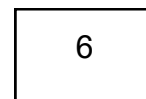
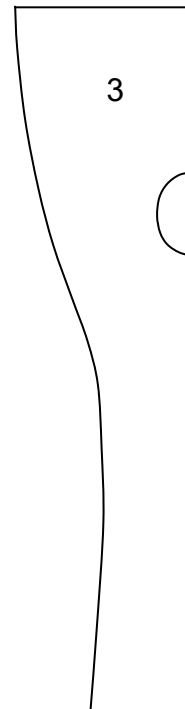
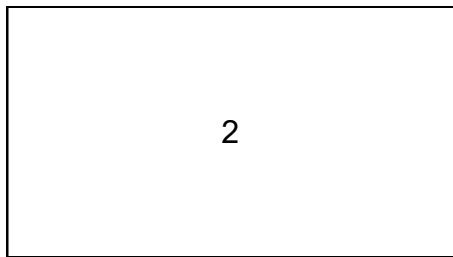
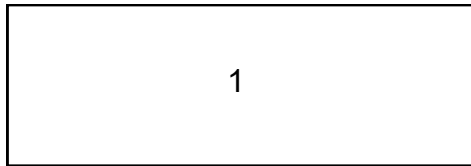
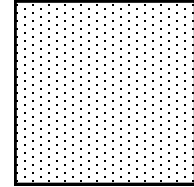
PATTERN PIECES

- 1) DIAPER A&B BACK BAND
- 2) DIAPER A RUFFLE
- 3) DIAPER A&B DIAPER
- 4) DIAPER A&B WAISTBAND
- 5) DIAPER B BOW
- 6) DIAPER B BOW KNOT

Pattern right
side up



Pattern right
side down

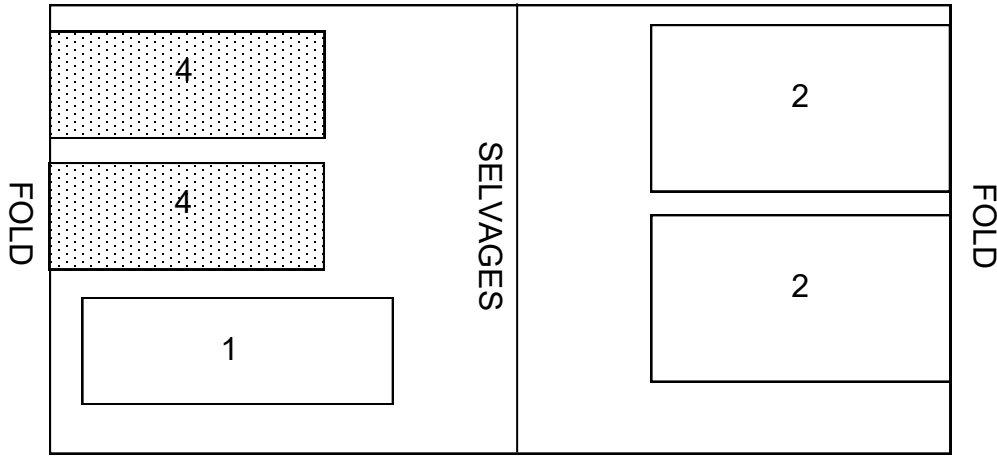


DIAPER A

DIAPER A Fabric A

USE PIECES 1 2 4

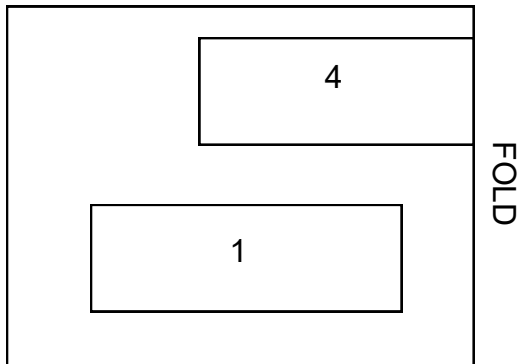
45"fabric



DIAPER A Interfacing

USE PIECES 1 4

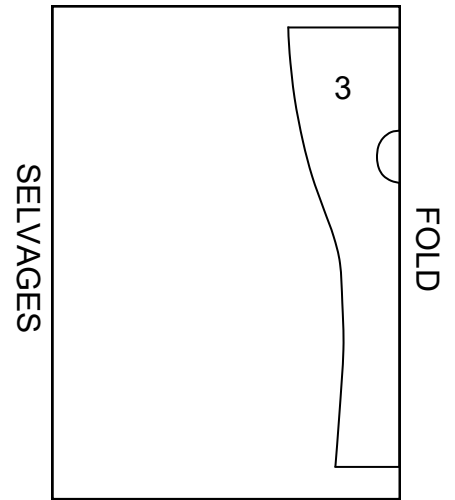
20"interfacing **Cut one of 1**



DIAPER A Fabric B

USE PIECES 3

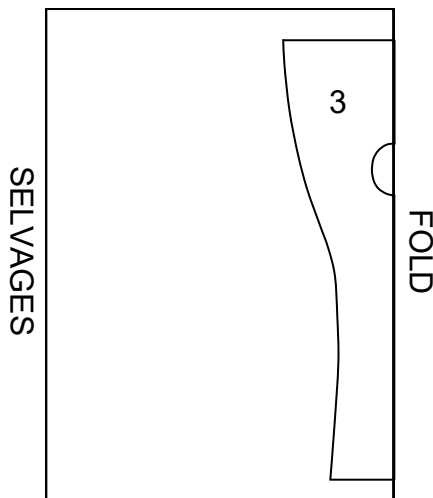
45"fabric



DIAPER A Flannel Lining

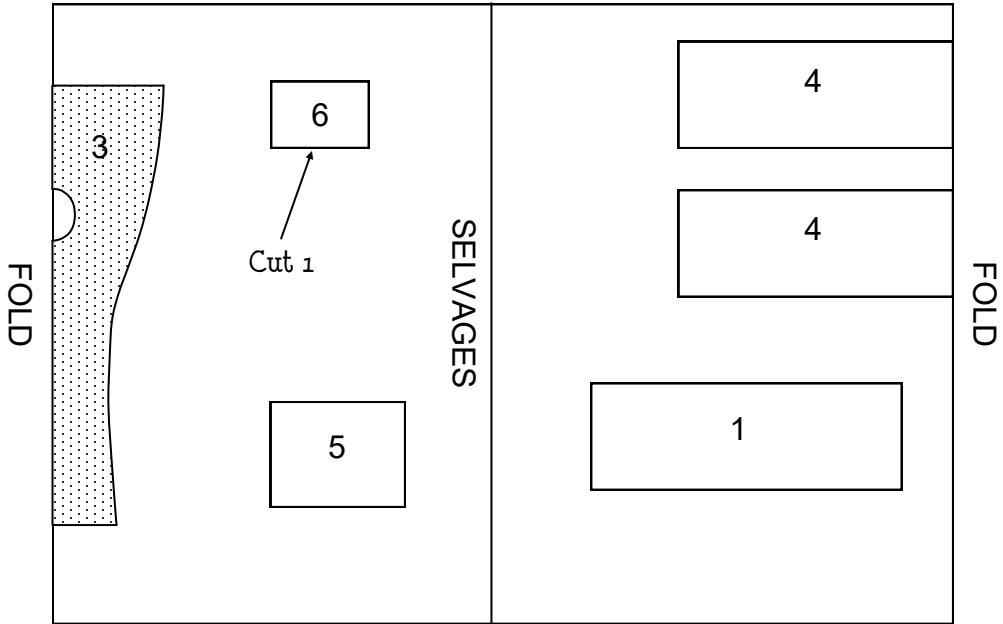
USE PIECES 3

45"fabric

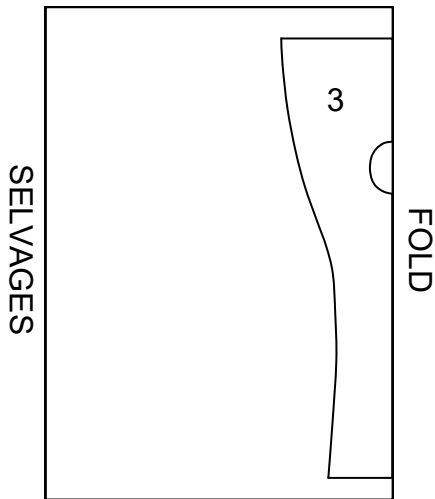


DIAPER B

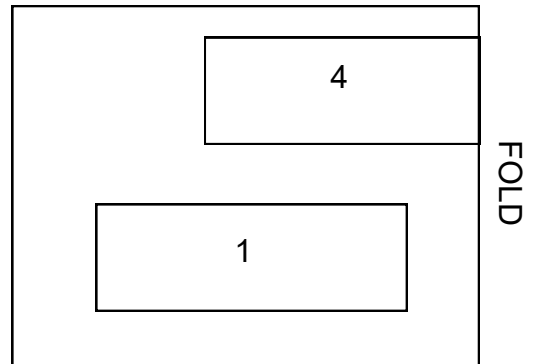
DIAPER B Fabric A
USE PIECES 1 3 4 5 6
45" fabric



DIAPER B Flannel Lining
USE PIECES 3
45" fabric



DIAPER B Interfacing
USE PIECES 1 4
20" interfacing **Cut one of 1**



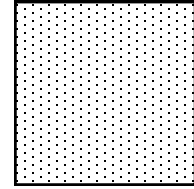
PATTERN PIECES

- 1) DIAPER A&B BACK BAND
- 2) DIAPER A RUFFLE
- 3) DIAPER A&B DIAPER Section 1
- 4) DIAPER A&B DIAPER Section 2
- 5) DIAPER A&B WAISTBAND
- 6) DIAPER B BOW
- 7) DIAPER B BOW KNOT

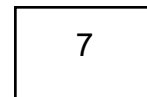
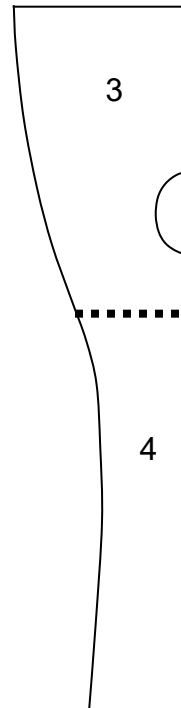
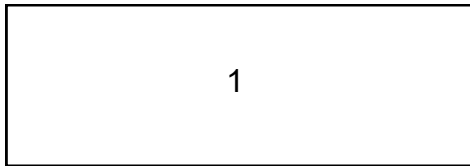
Pattern right
side up



Pattern right
side down

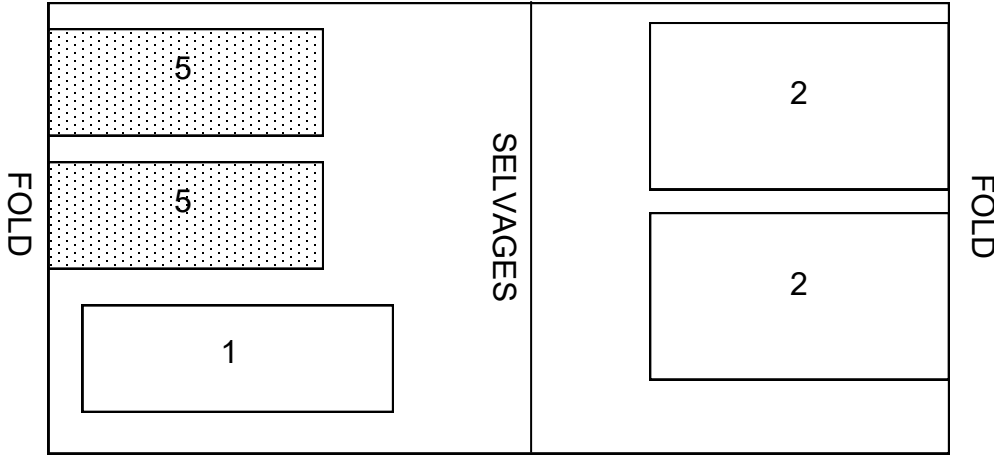


Tape pattern pieces together
prior to cutting fabric.

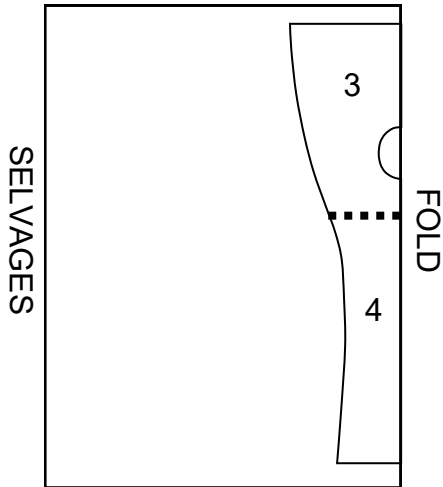


DIAPER A

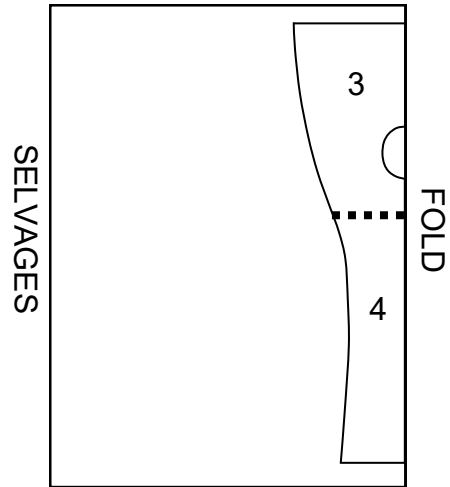
DIAPER A Fabric A
 USE PIECES 1 2 5
 45"fabric



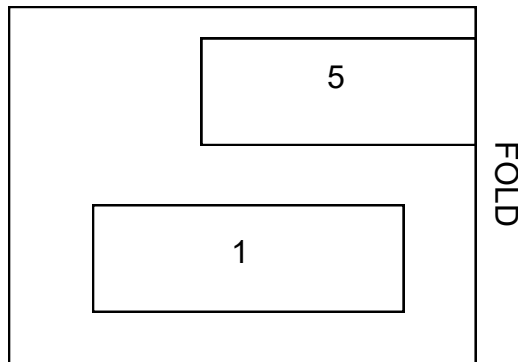
DIAPER A Flannel Lining
 USE PIECES 3/4
 45"fabric



DIAPER A Fabric B
 USE PIECES 3/4
 45"fabric



DIAPER A Interfacing
 USE PIECES 1 5
 20"interfacing **Cut one of 1**

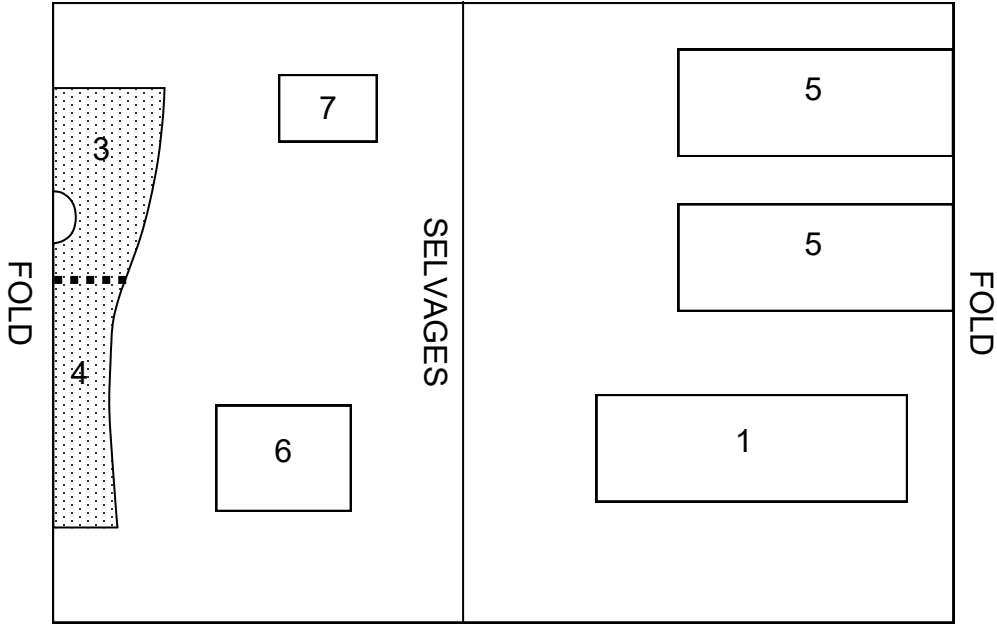


DIAPER B

DIAPER B Fabric A

USE PIECES 1 3/4 5 6 7

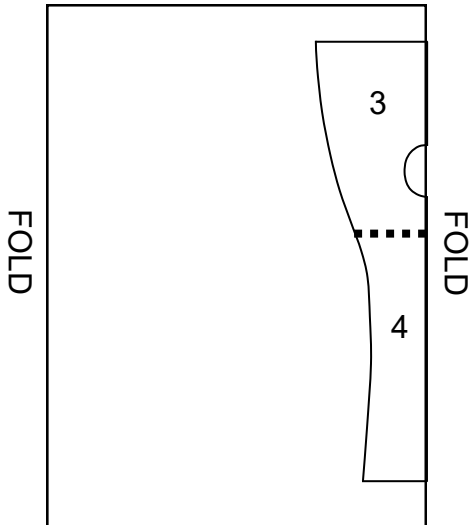
45"fabric **Cut one of 7**



DIAPER B Flannel Lining

USE PIECES 3/4

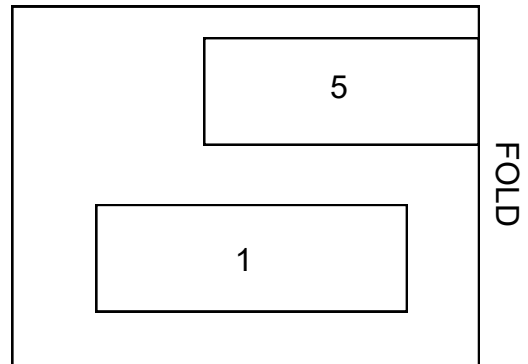
45"fabric

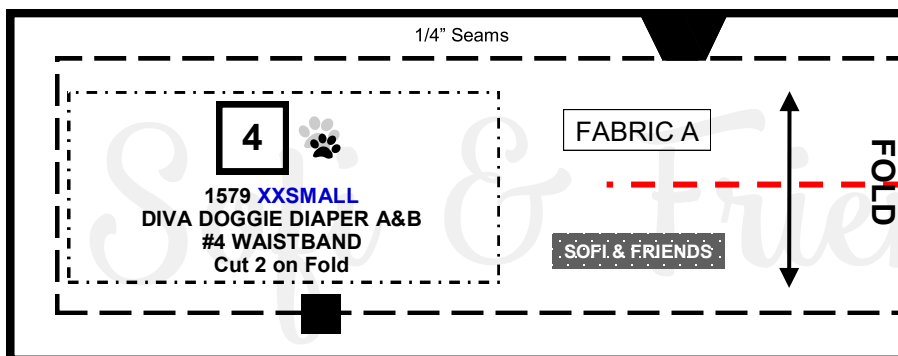
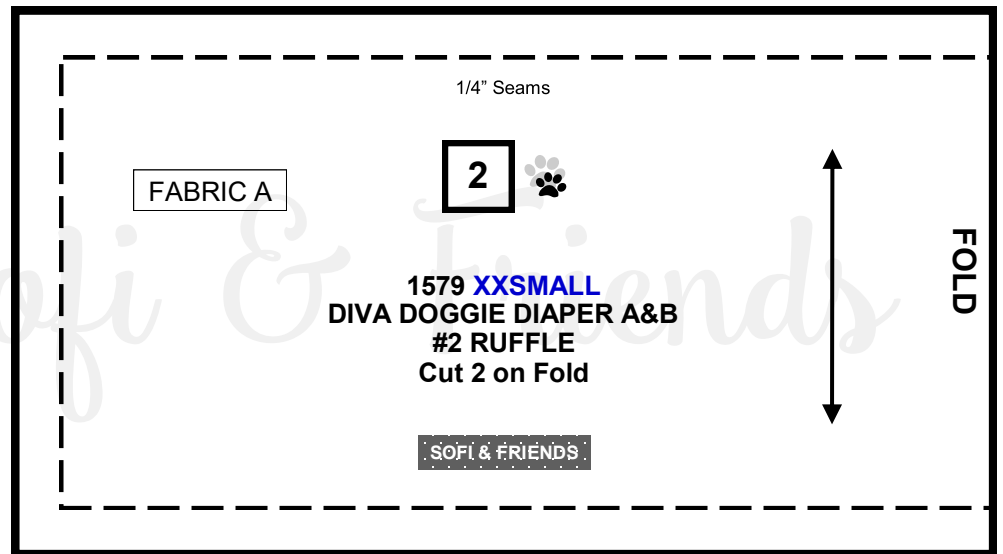
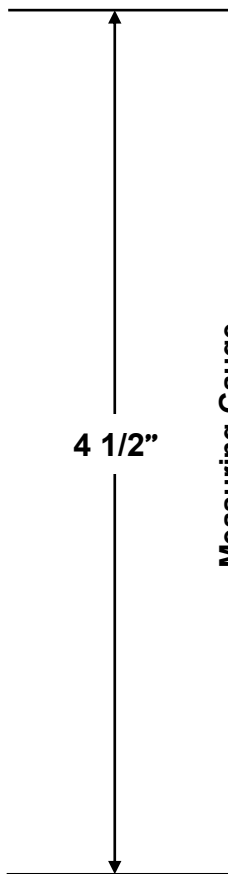
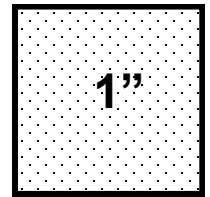
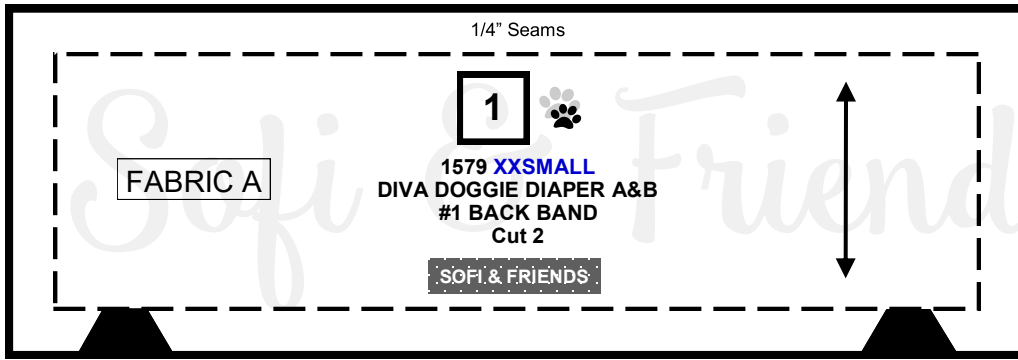


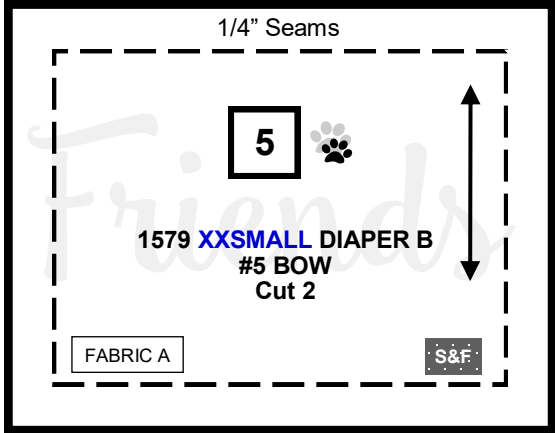
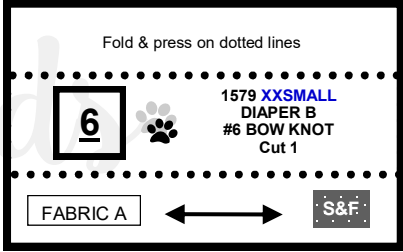
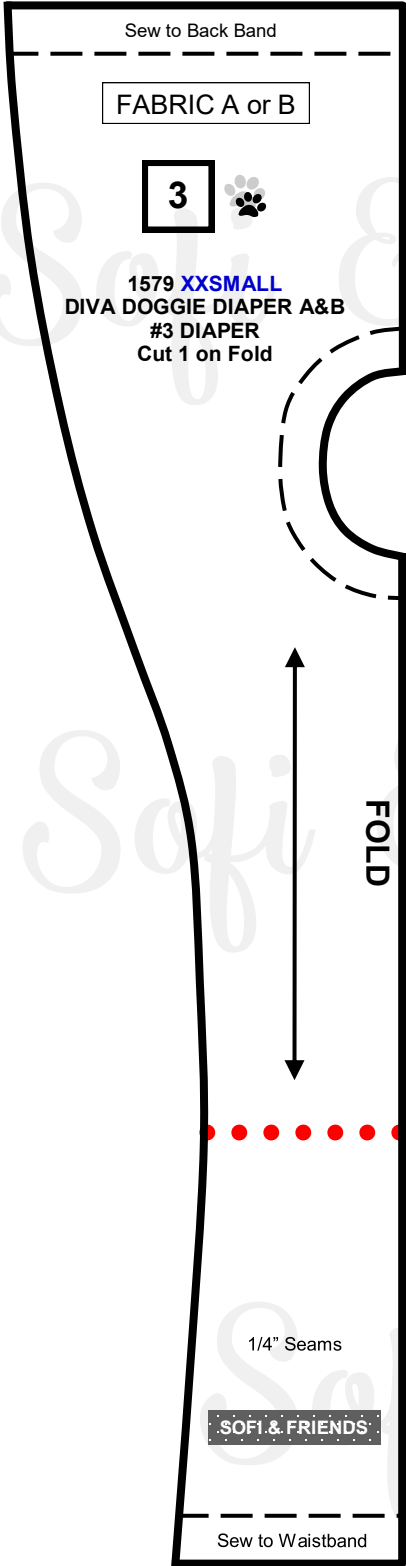
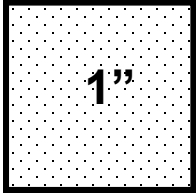
DIAPER B Interfacing

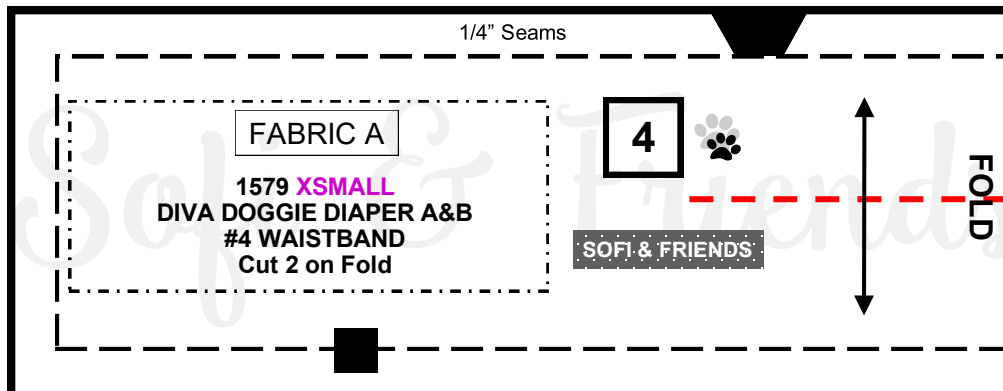
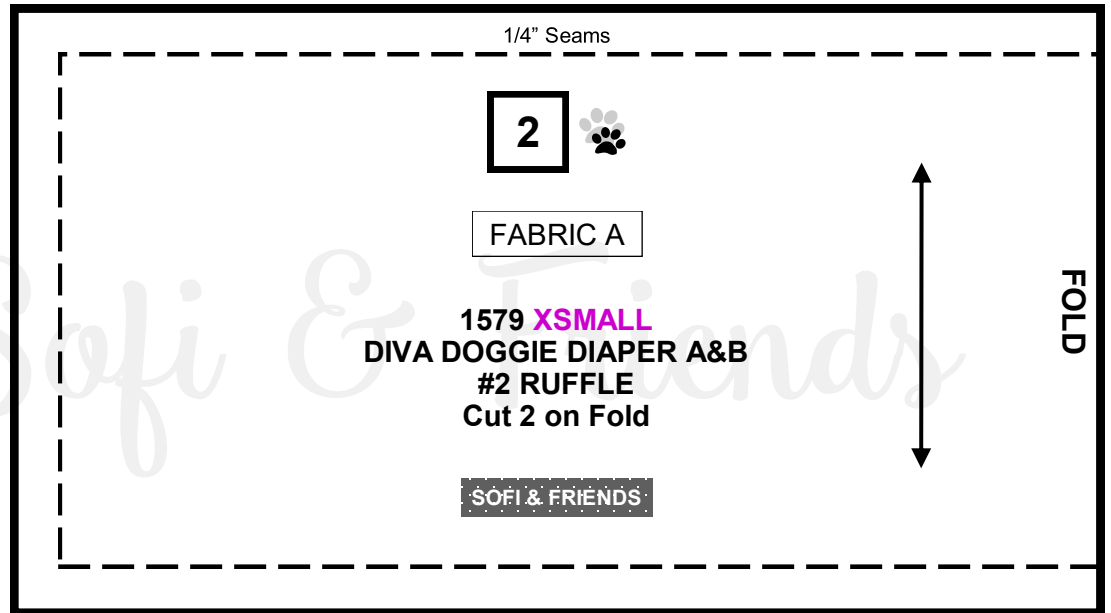
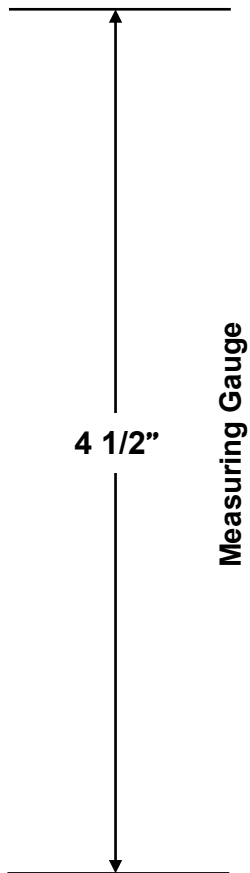
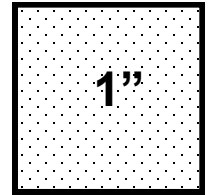
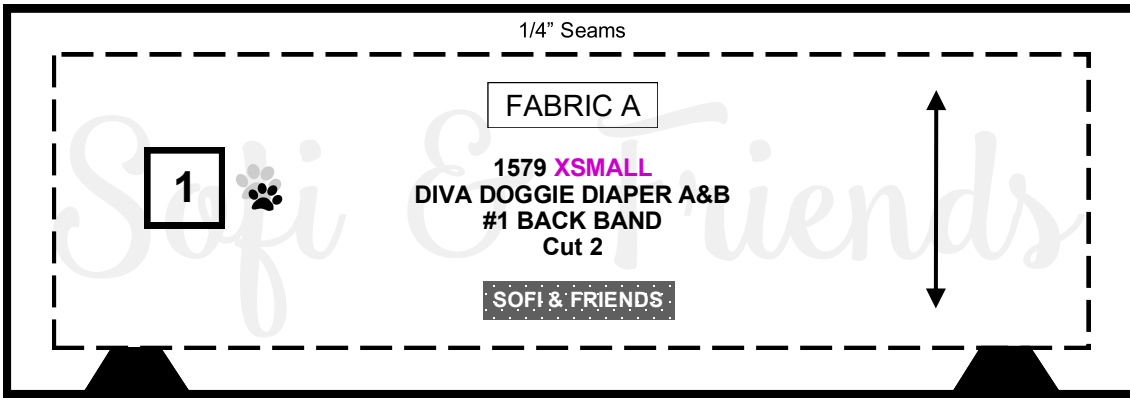
USE PIECES 1 5

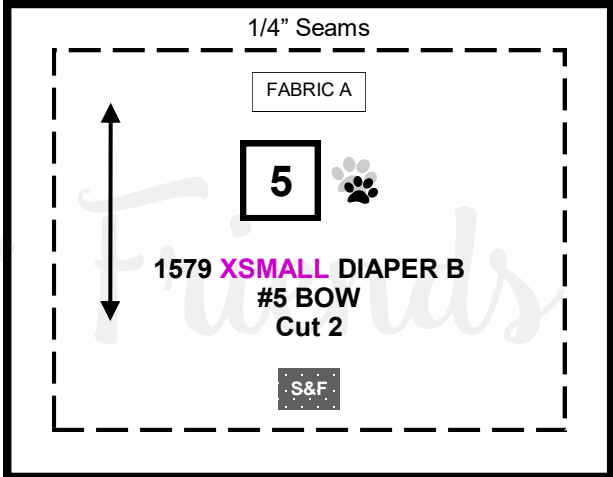
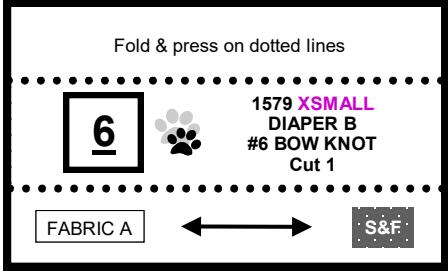
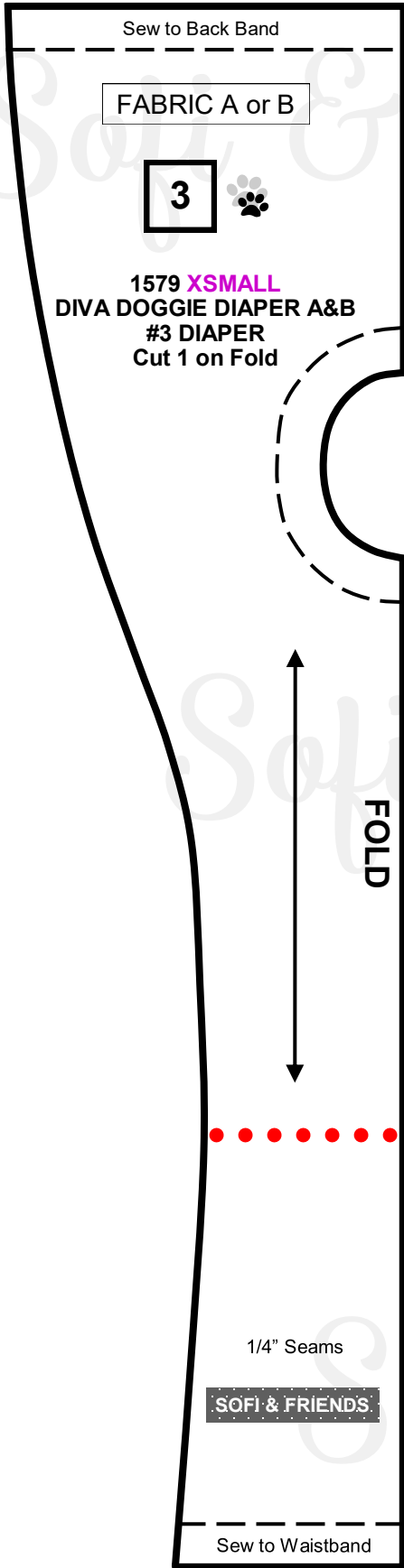
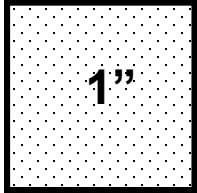
20"interfacing **Cut one of 1**

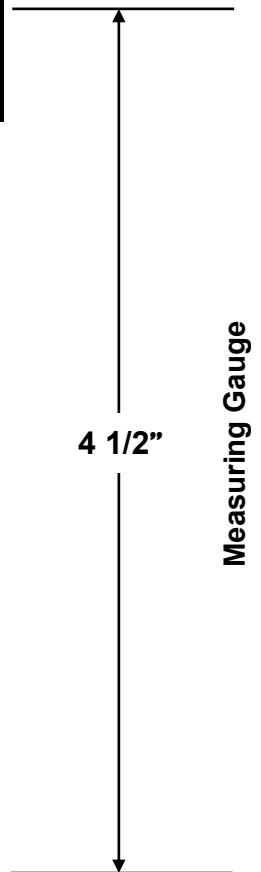
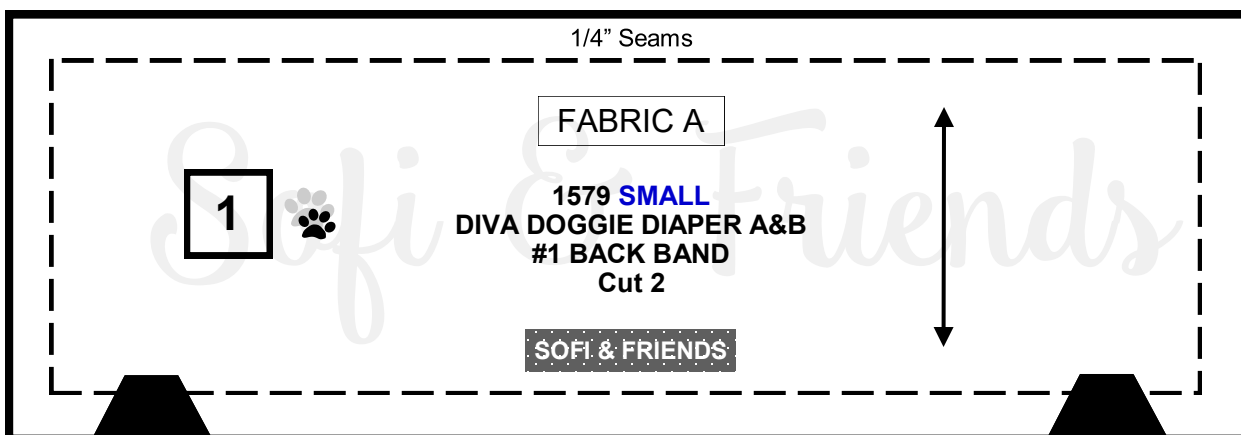
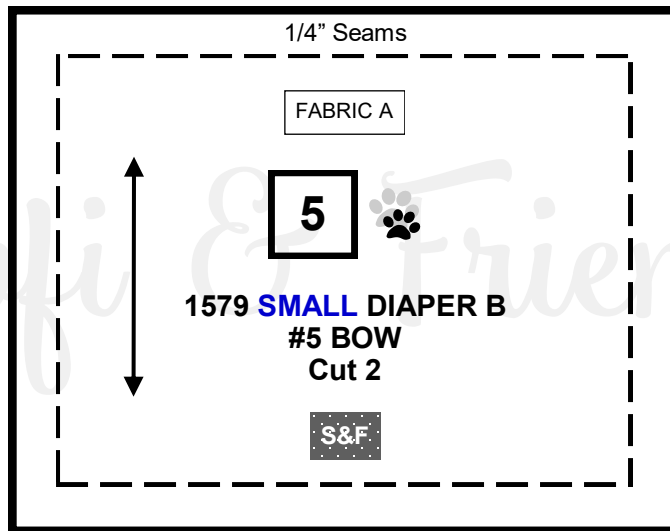
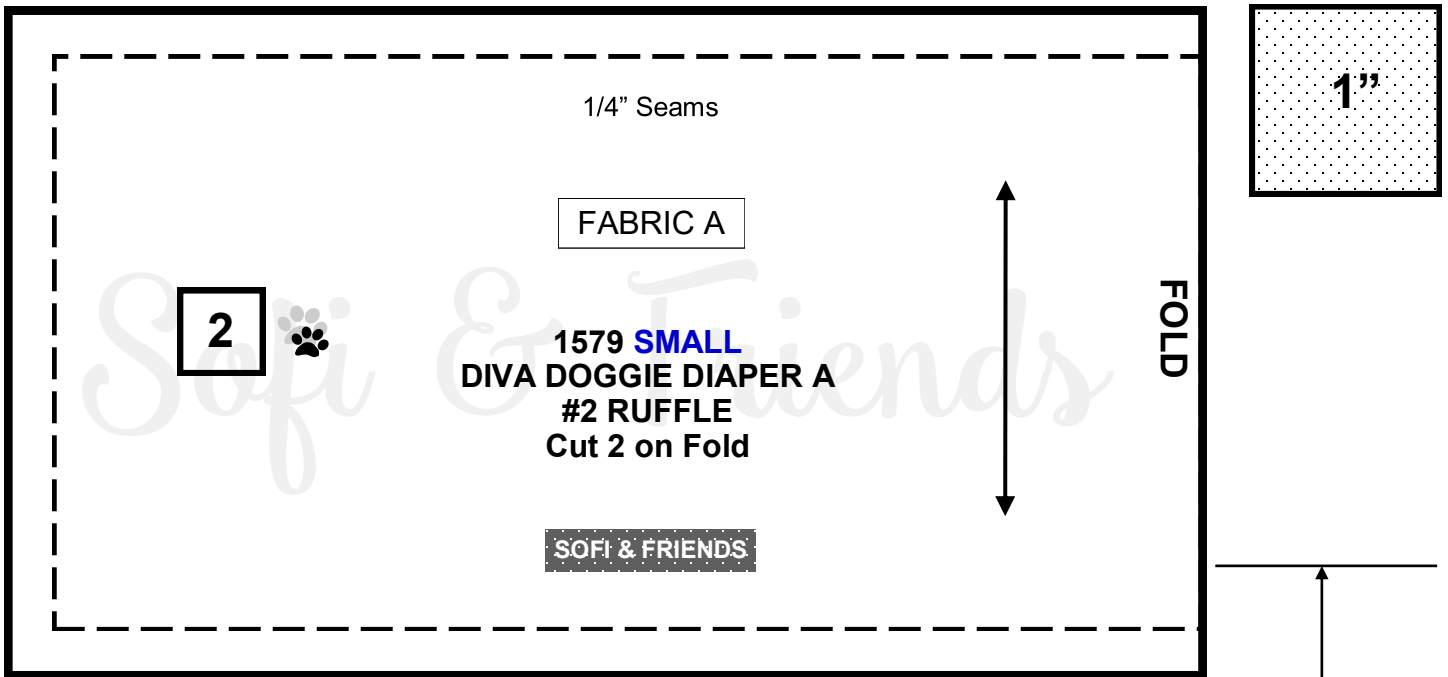


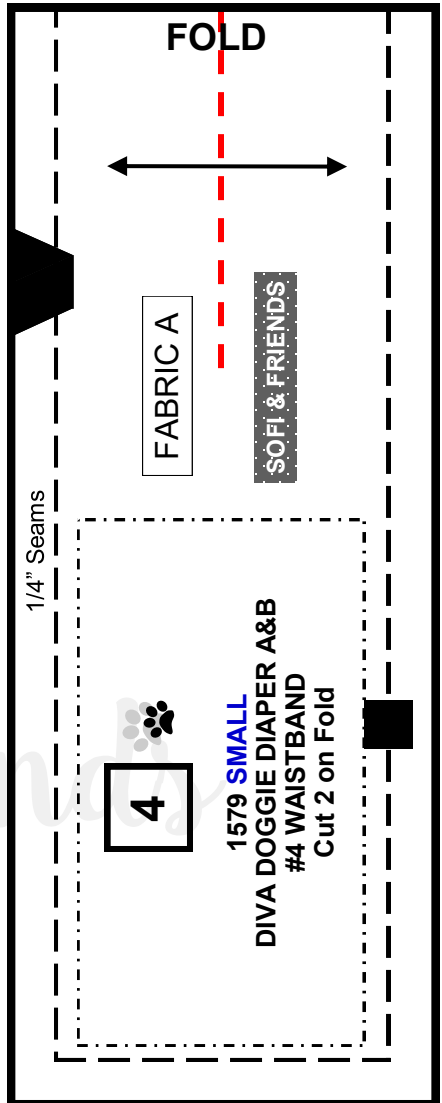
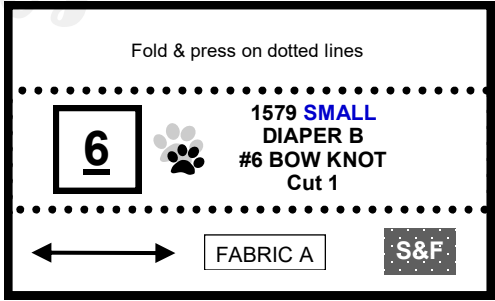
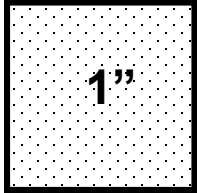
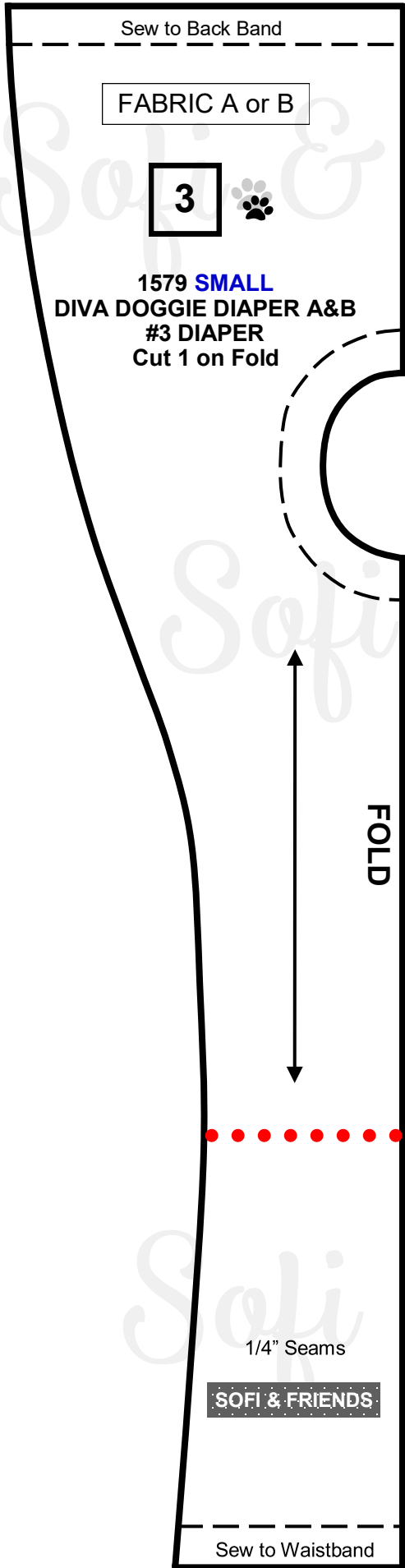


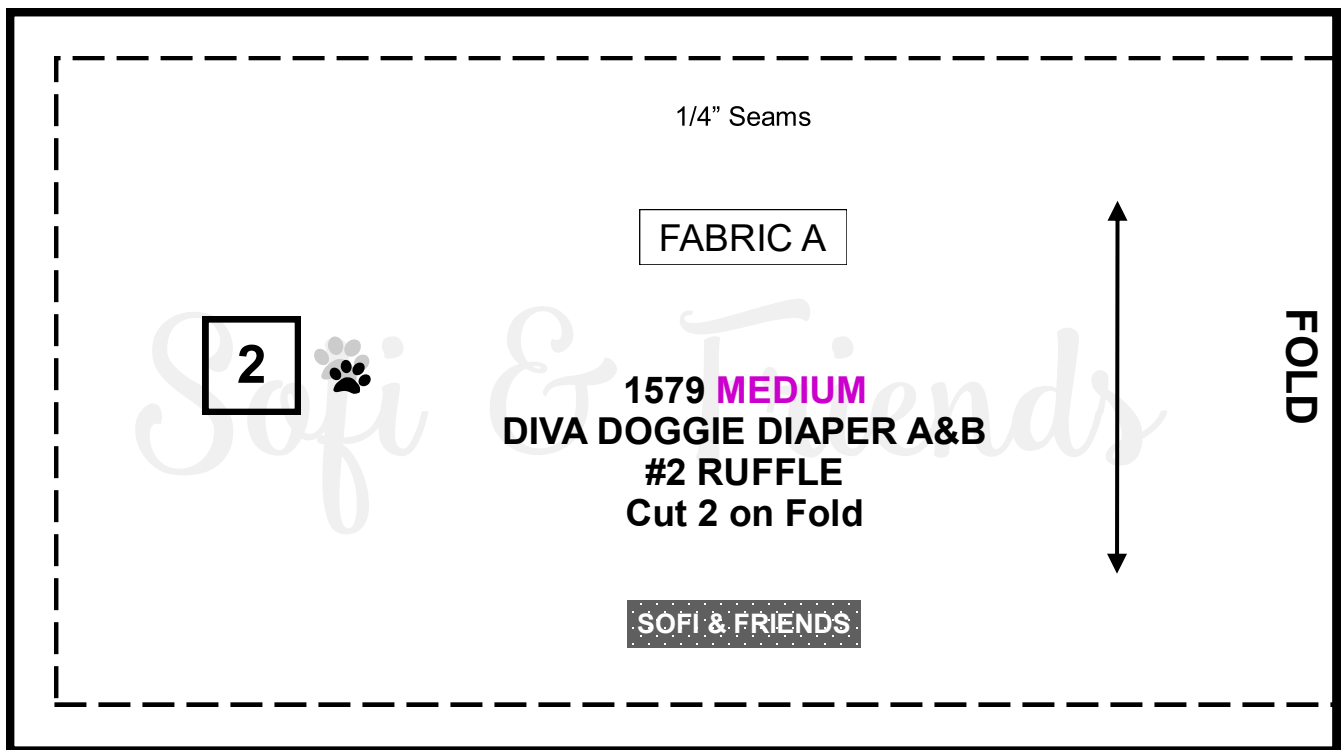
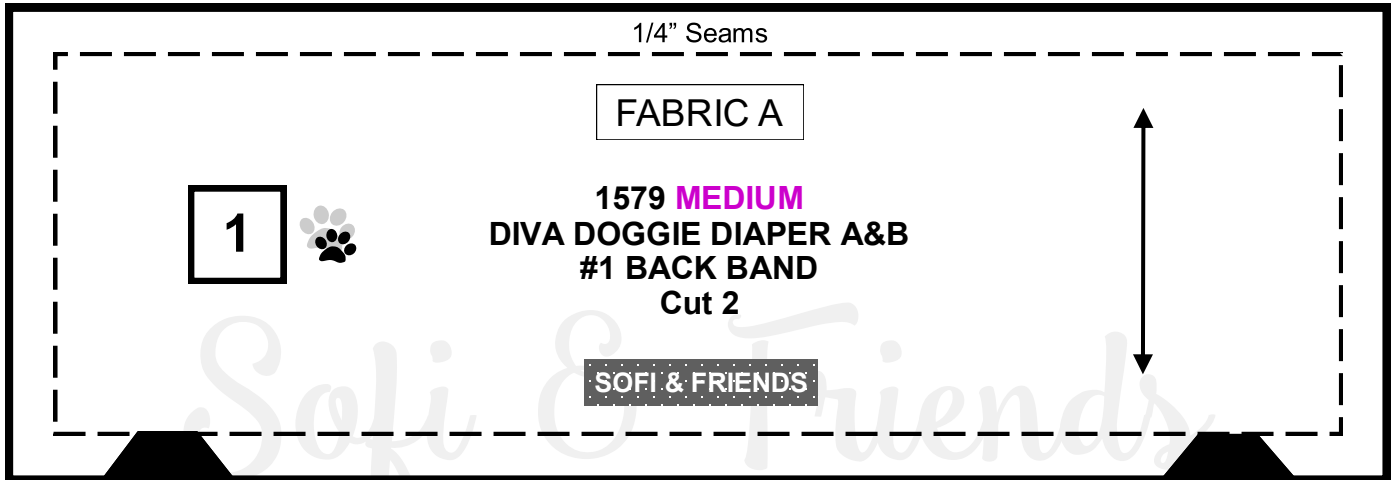
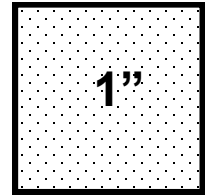
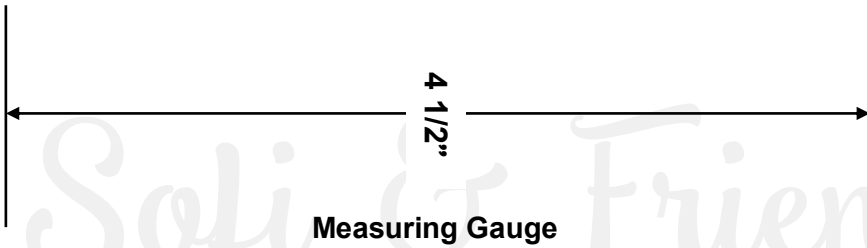


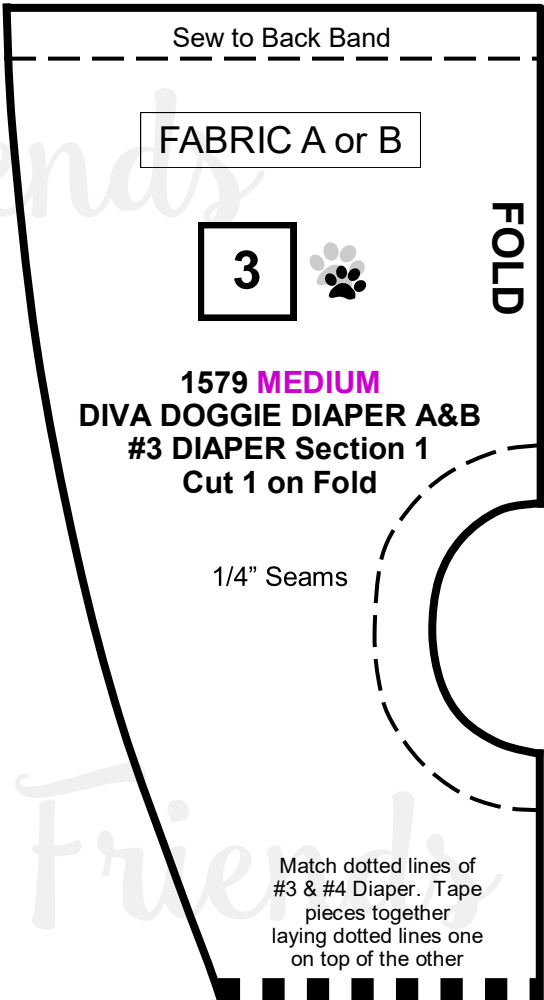
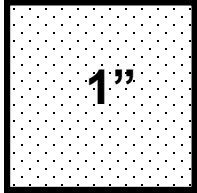
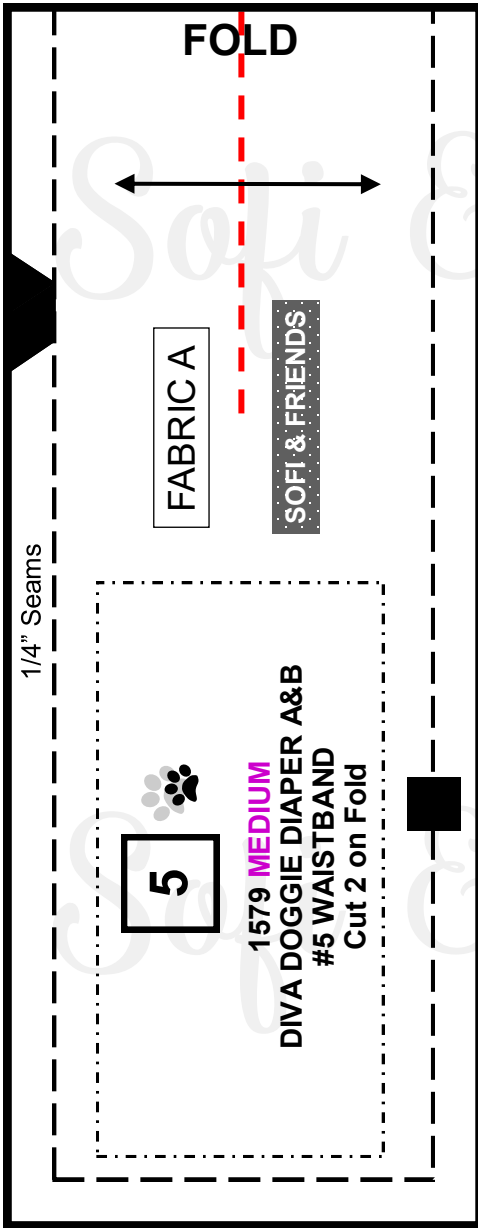








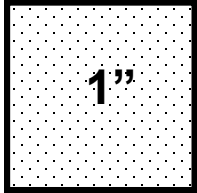




Match dotted lines of #3 & #4 Diaper. Tape pieces together laying dotted lines one on top of the other

Cut on outside edge of dotted line

Cut on outside edge
of dotted line



Match dotted lines of
#3 & #4 Diaper. Tape
pieces together
laying dotted lines one
on top of the other

4



**1579 MEDIUM
DIVA DOGGIE
DIAPER A&B
#4 DIAPER
Section 2**



SOFI & FRIENDS

Sew to Waistband

Fold & press on dotted lines

7



**1579 MEDIUM
DIAPER B
#7 BOW KNOT
Cut 1**

FABRIC A



S&F

1/4" Seams

FABRIC A

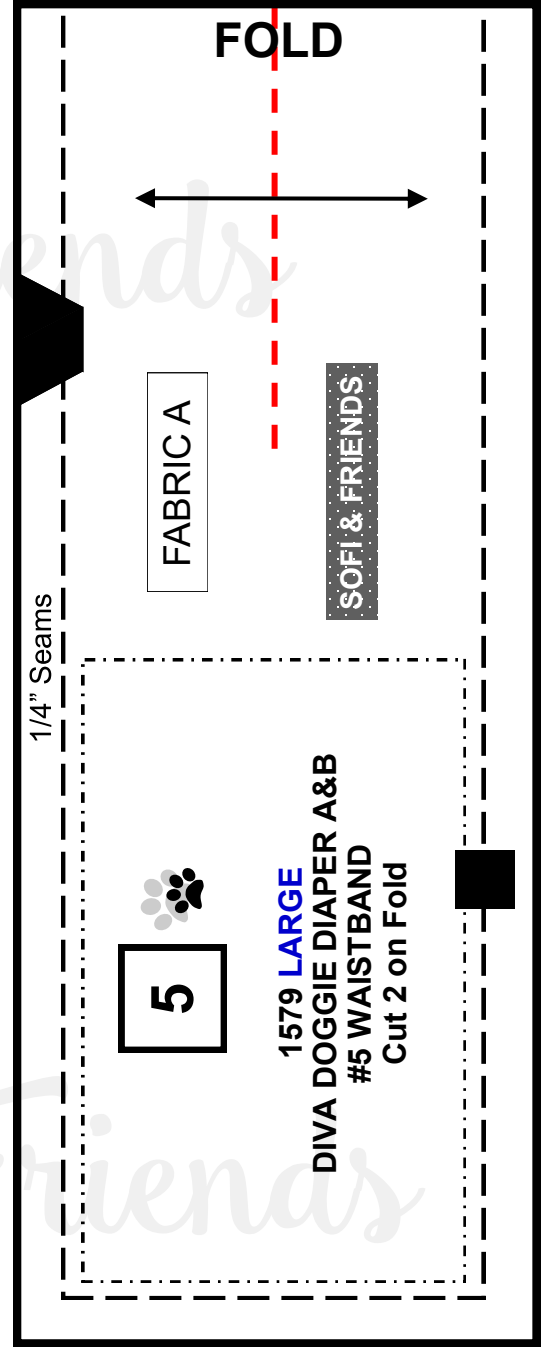
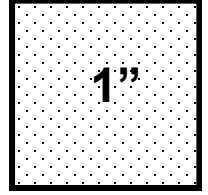
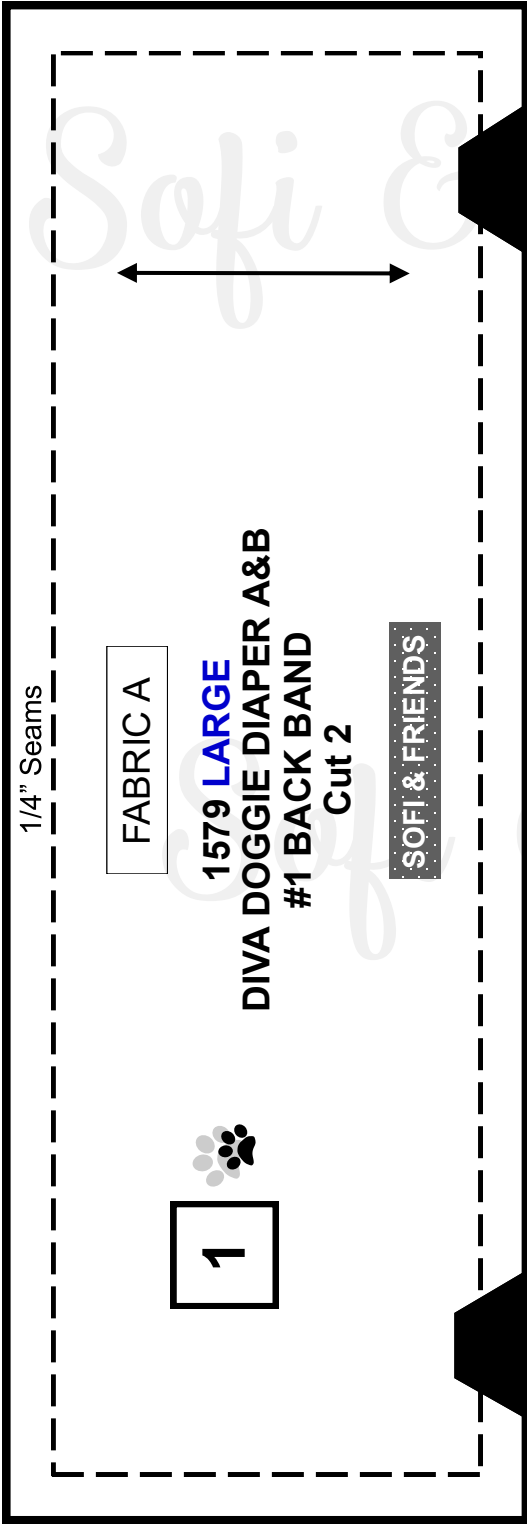
6

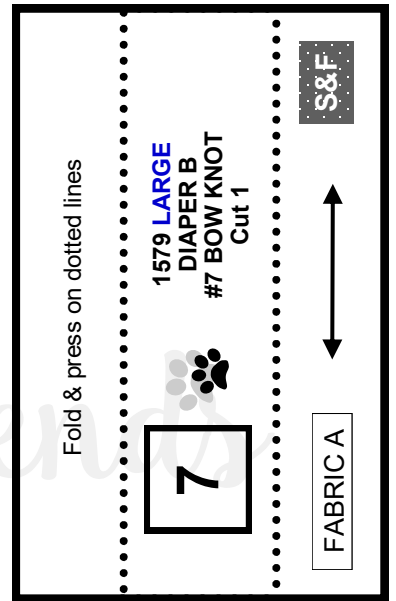
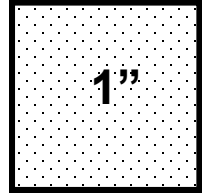
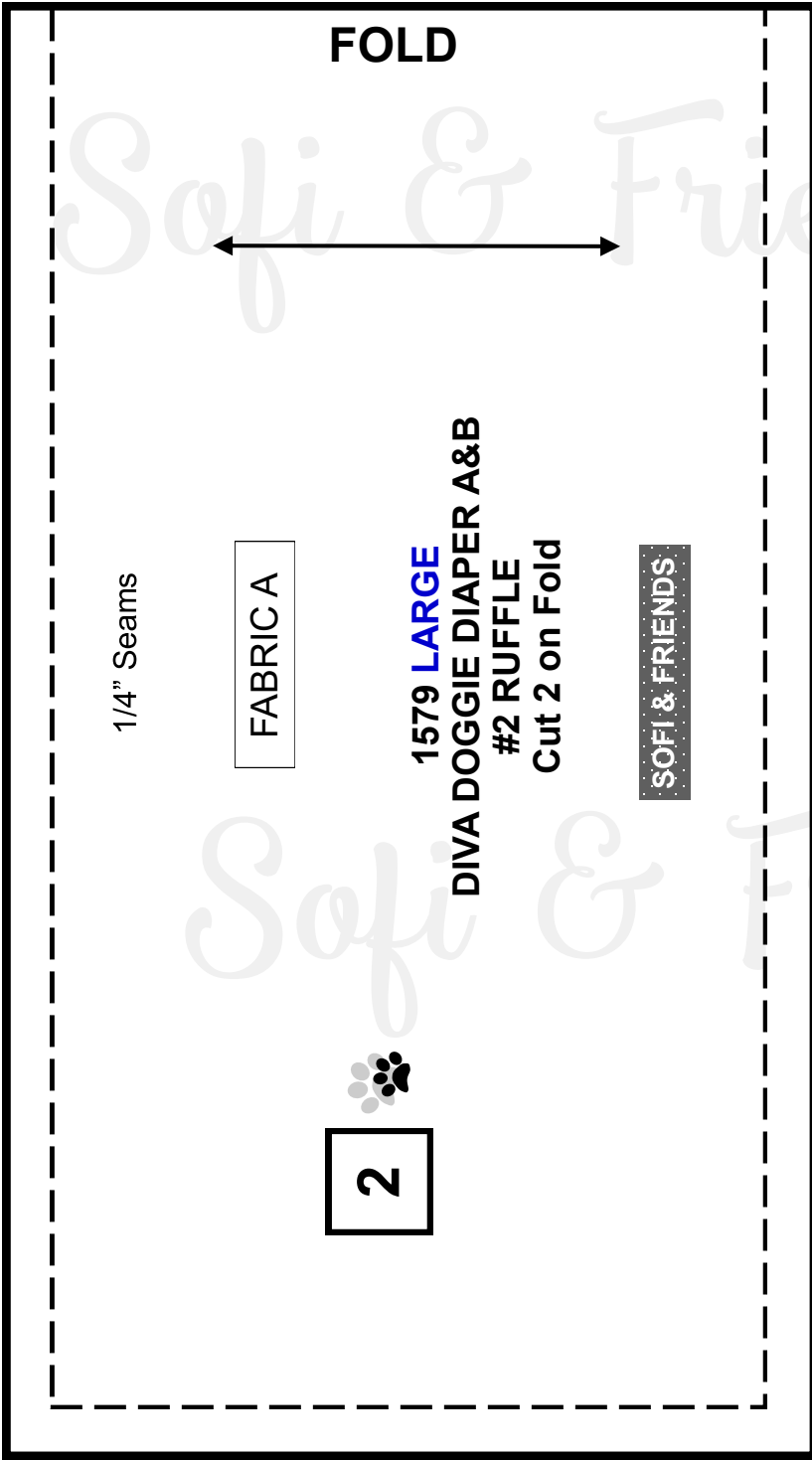


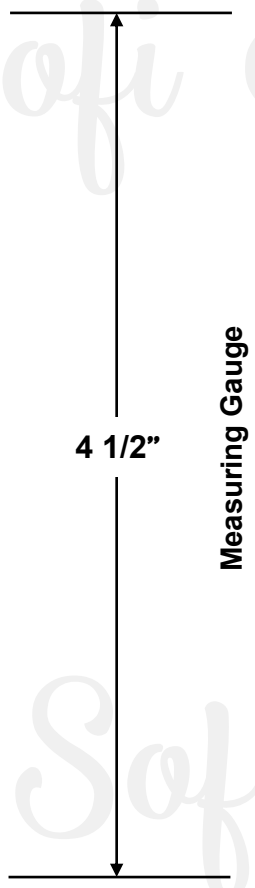
**1579 MEDIUM DIAPER B
#6 BOW
Cut 2**

SOFI & FRIENDS

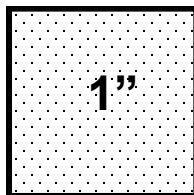
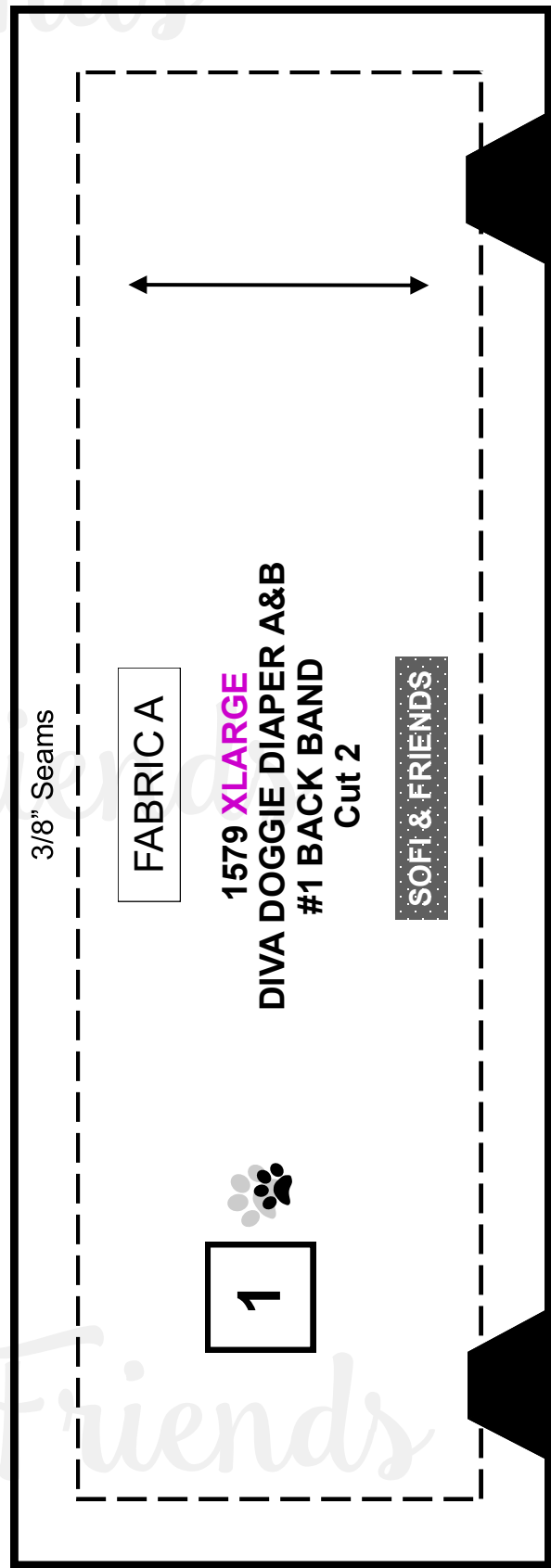
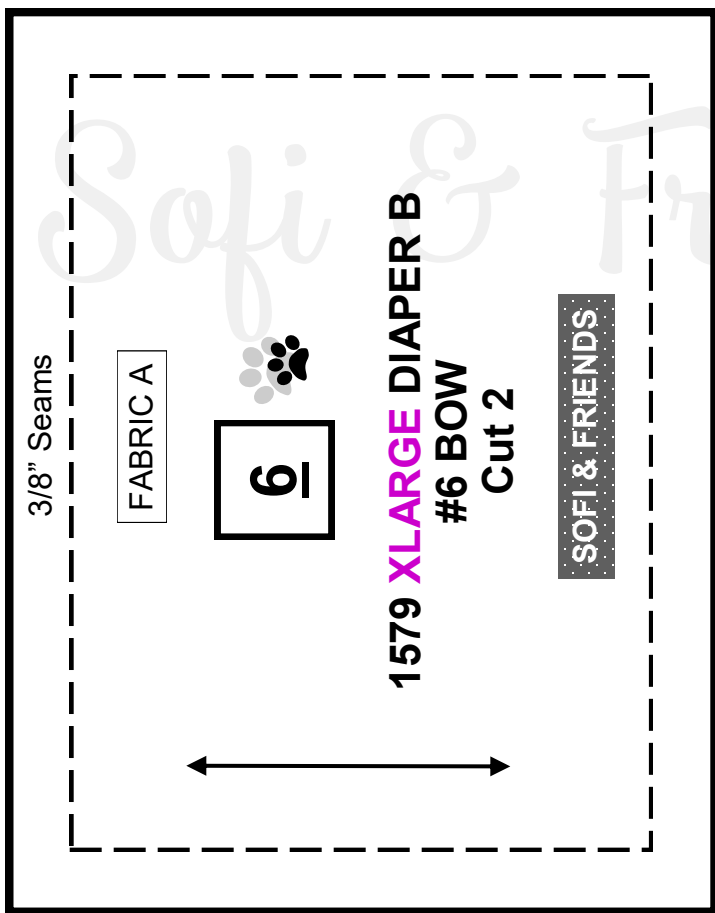


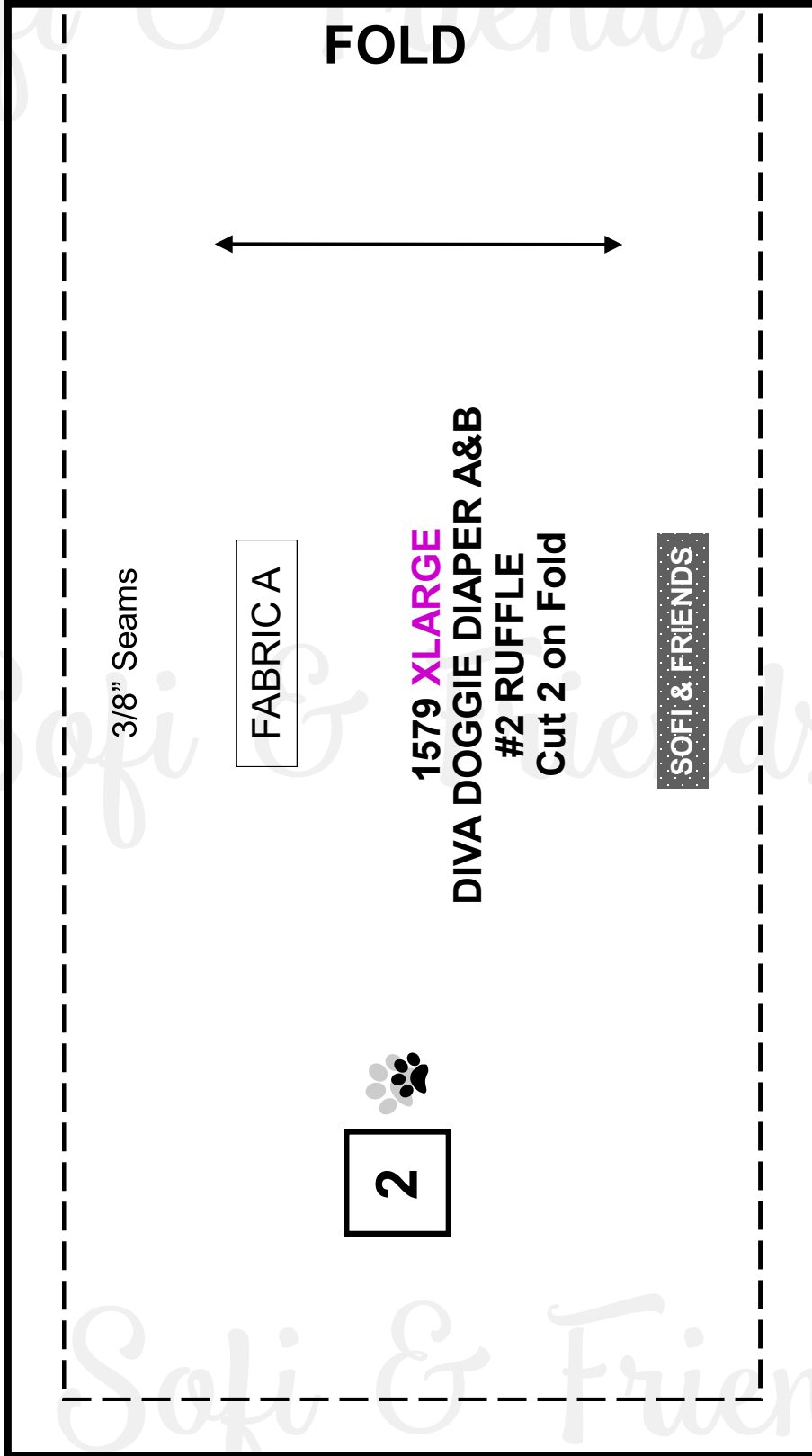
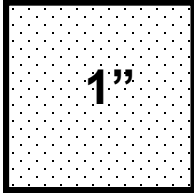




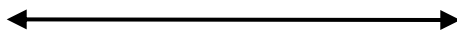


Measuring Gauge






FOLD



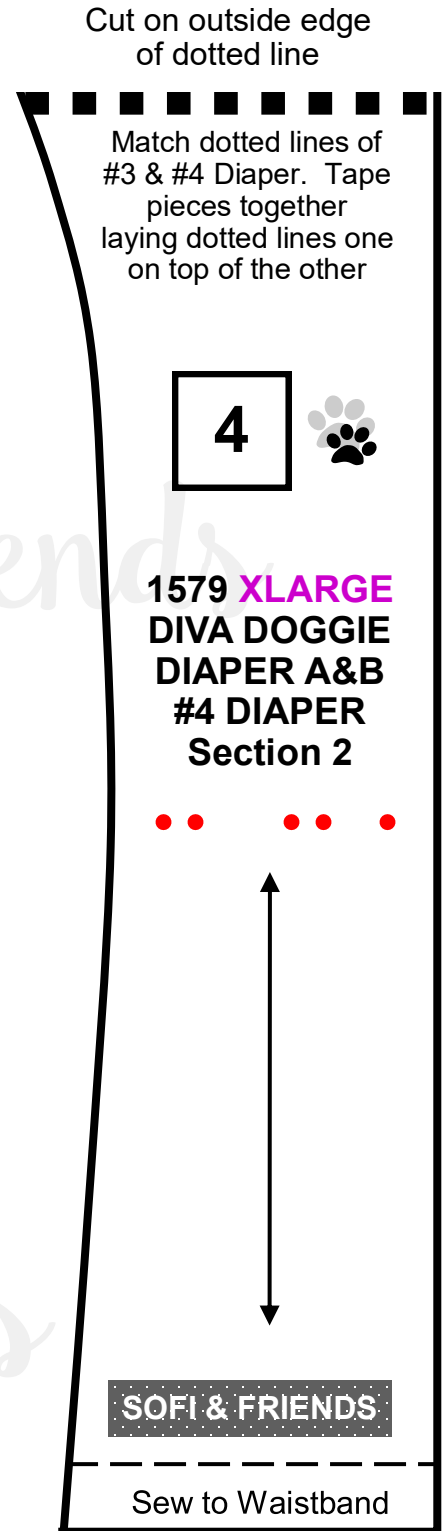
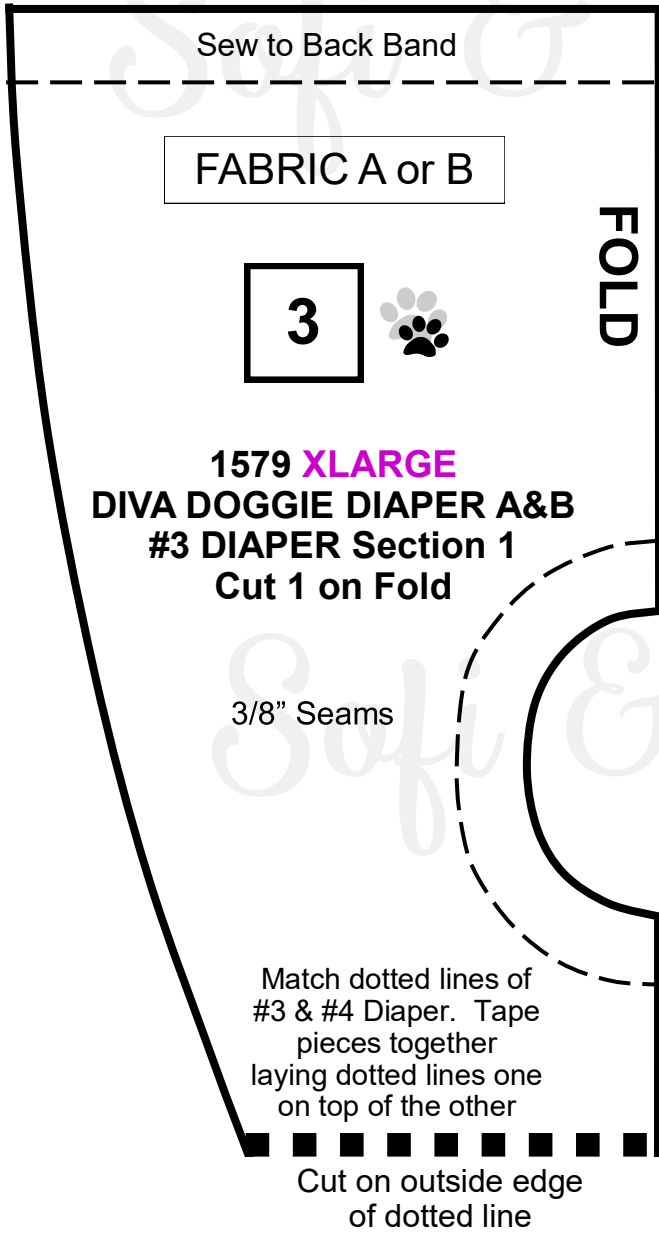
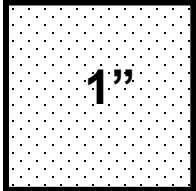
3/8" Seams

FABRICA

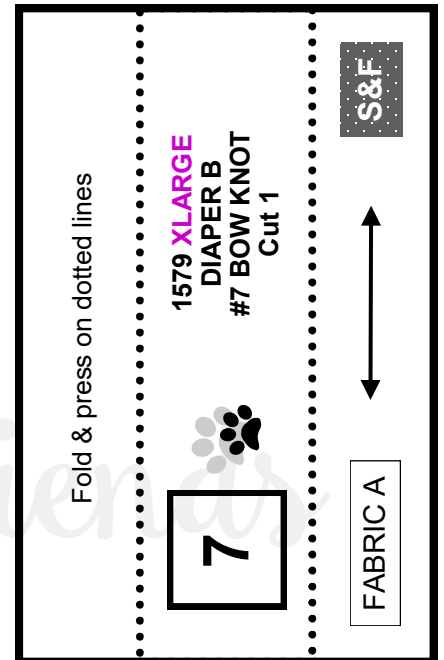
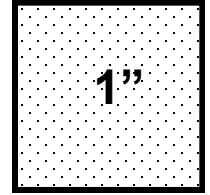
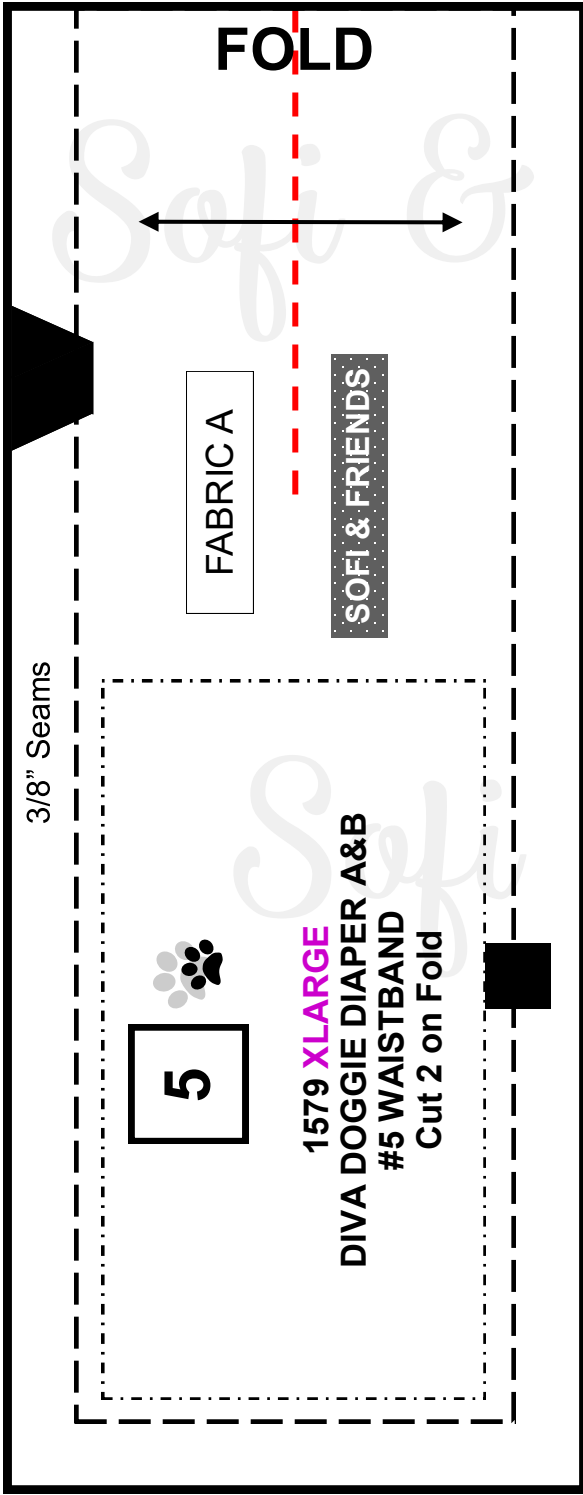
2 

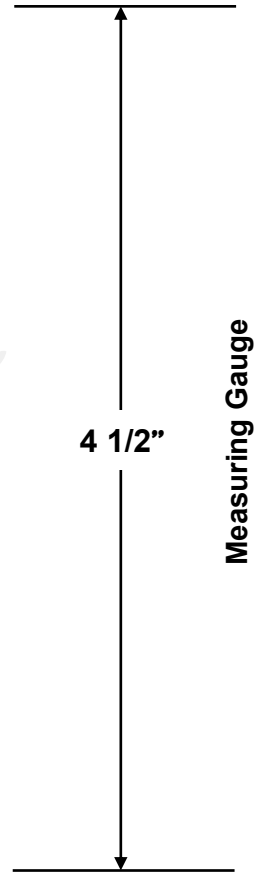
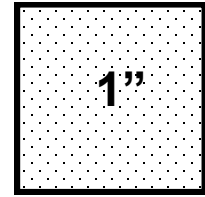
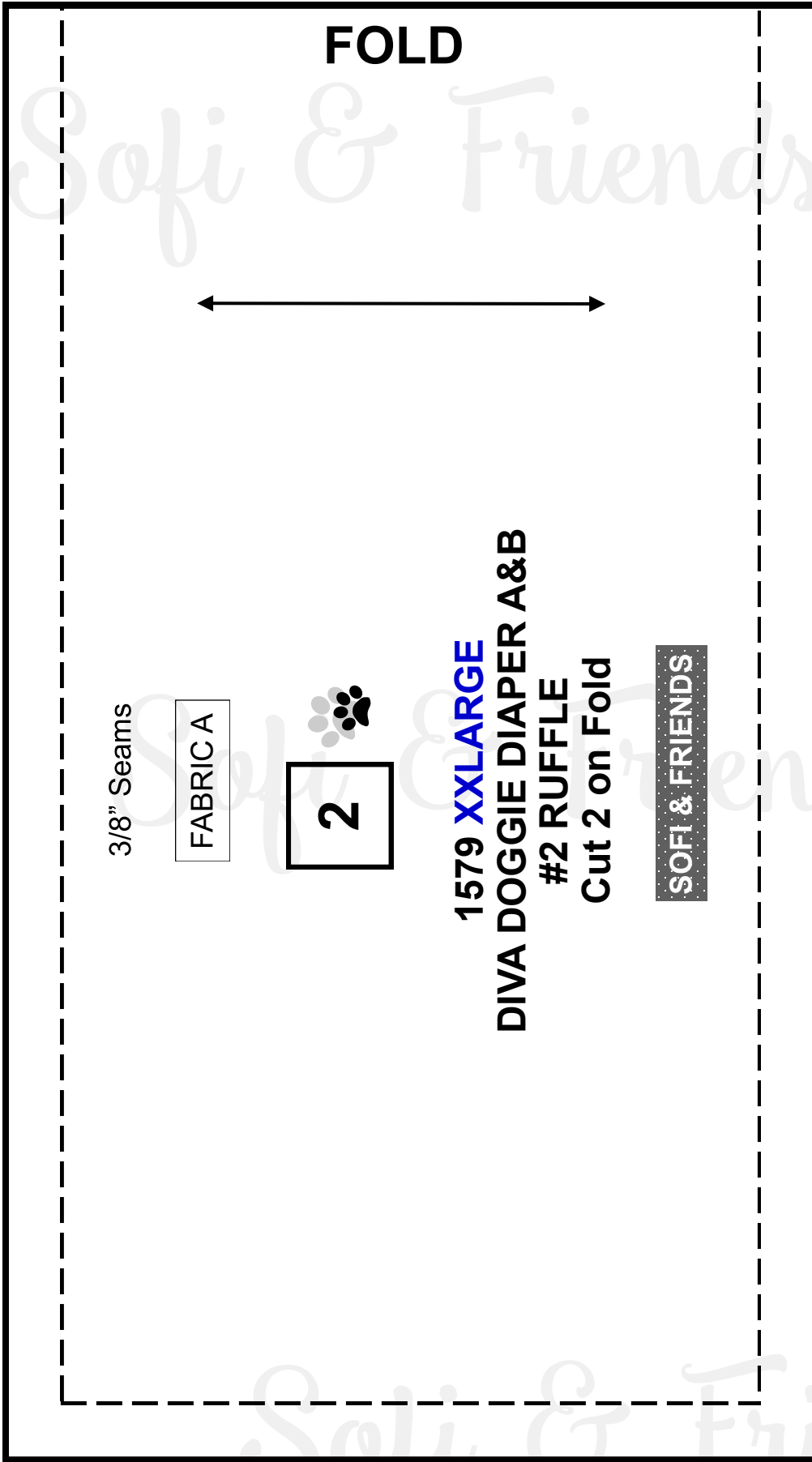
1579 XLARGE
DIVA DOGGIE DIAPER A&B
#2 RUFFLE
Cut 2 on Fold

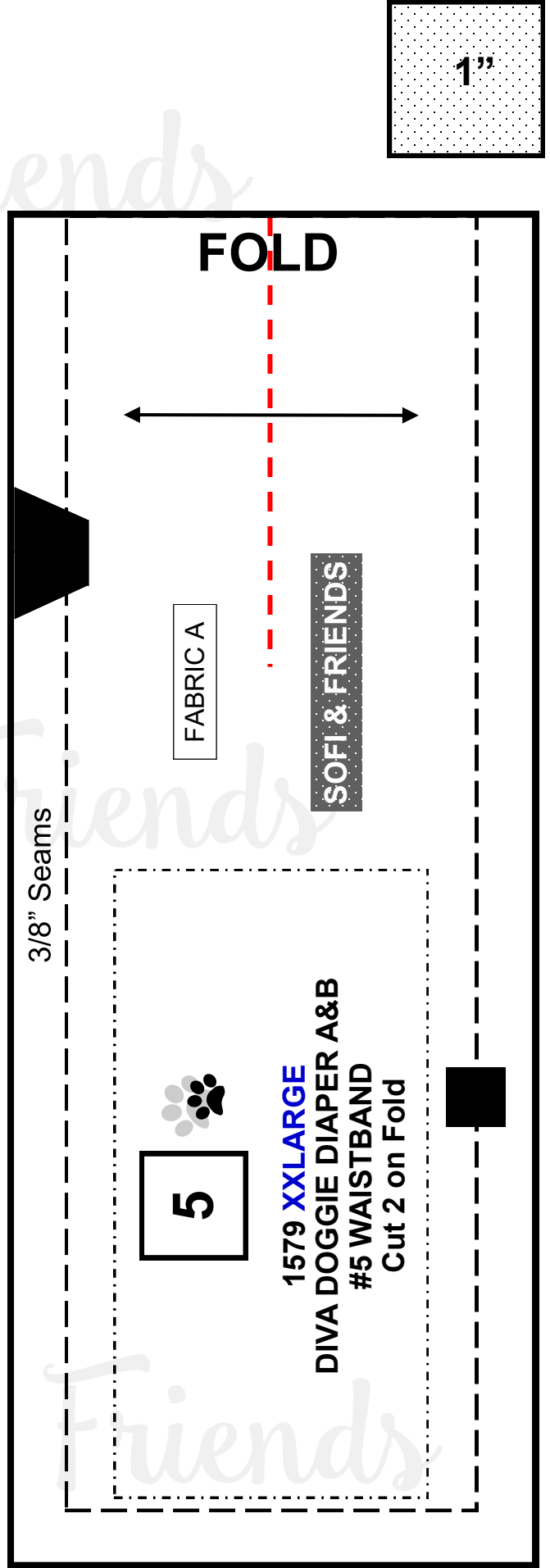
SOFI & FRIENDS



Sofi & Friends



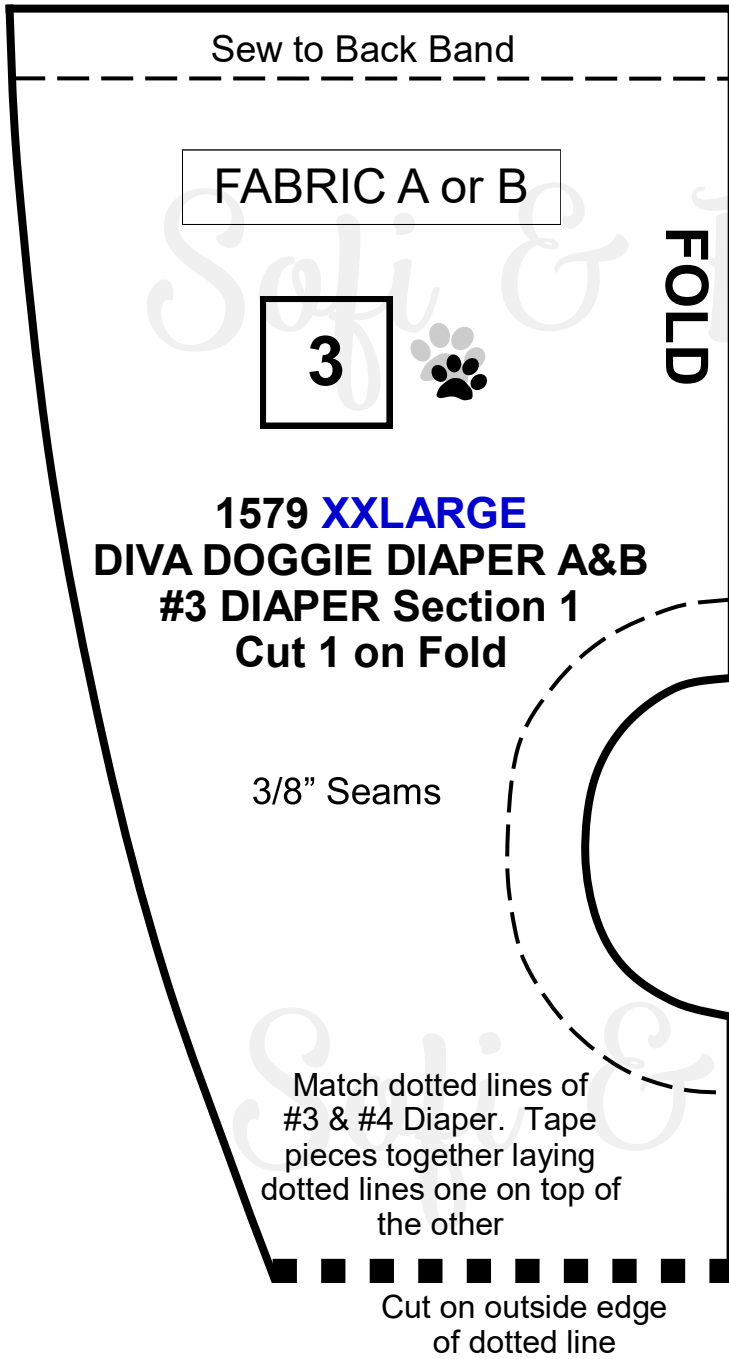
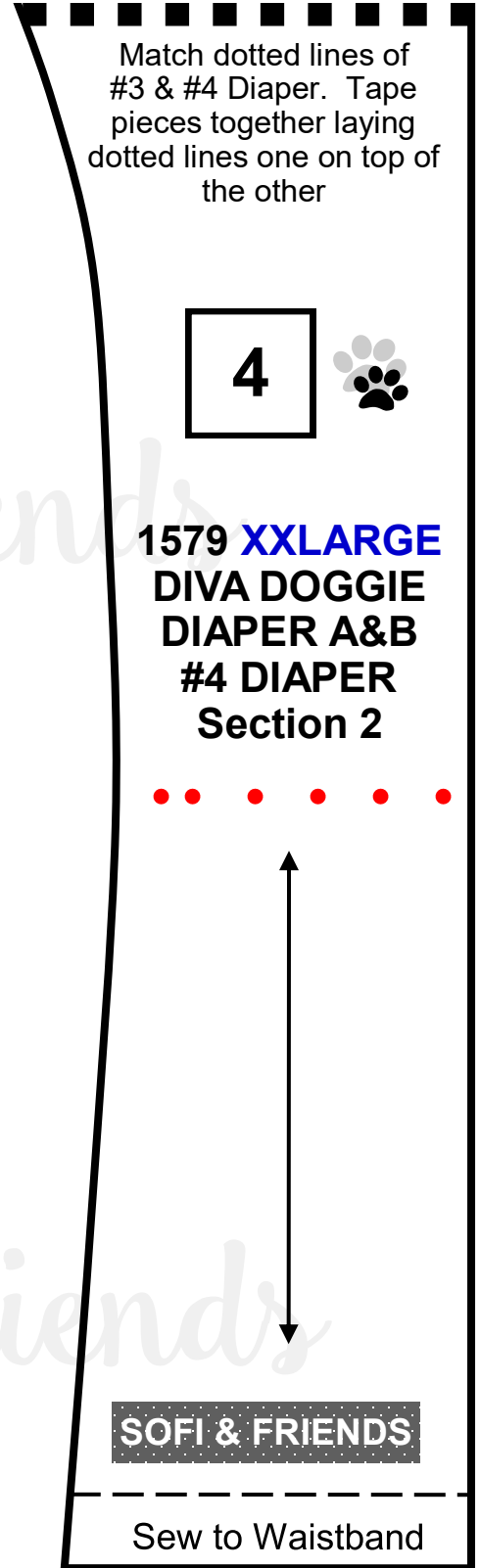


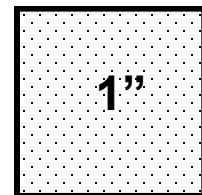
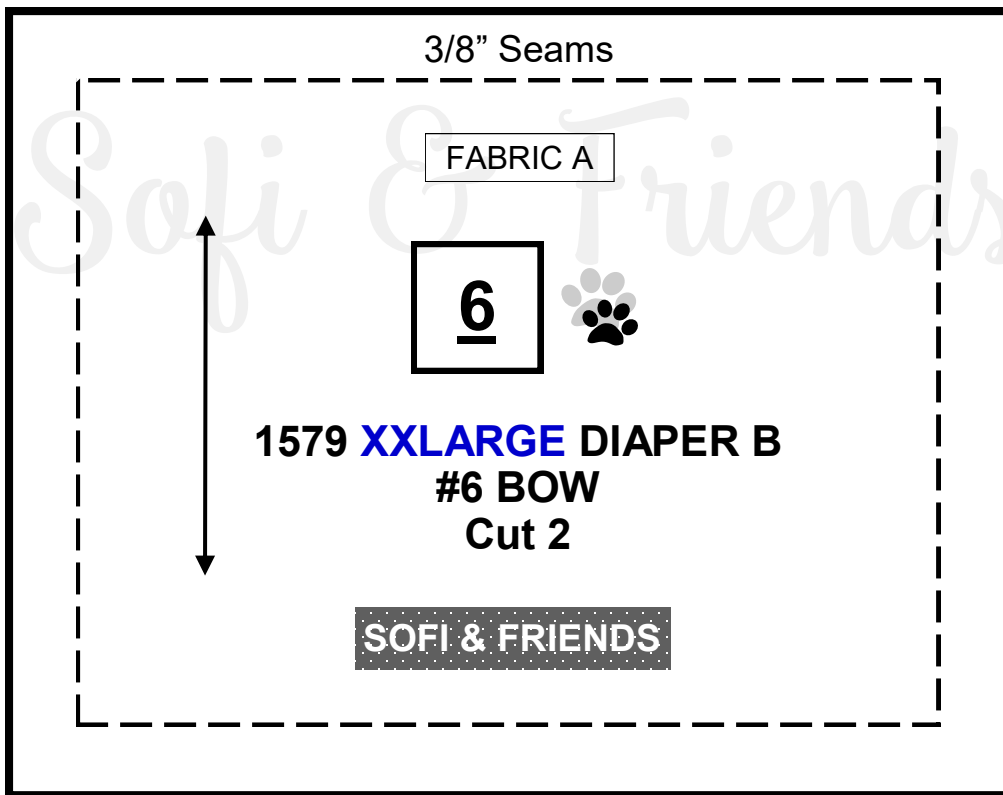




Sofi & Friends

Cut on outside edge of dotted line





Sofi & Friends

